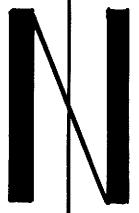


CURVE DATA @ STEPHENS ST.

P.S.C. — 1603+19.40
 3° 30' C.L.
 T_A = 52° 25'
 500' SP'S
 S = 8° 45'
 a = 0.7
 R = 1637.02'

NOTE THERE IS SEVERAL MINUTES
 ERROR IN SPIRAL CURVE AS
 ORIGINALLY STAKED — SEE
 PG. 12 OF O.S.H.D. FIELD
 NOTES

BLOCK 6
 NORTH PARK ADD.



● SET 5/8" I. ROD
 1" = 30'
 BASIS OF BEARING — N 27° 54' E —
 O.S.H.D. BRASS CAP MON. 24' RT.
 @ STA. P.O.T. 1593+56.75 AND P.S.
 1598+19.40' — BOTH MON. LOCATED IN
 CURB E. SIDE STEPHENS, S. OF DIA. LAKE BLVD.

fd. 2" i. pipe in conc.
 N.W. COR.
 D.L.C. NO. 38

fd. st. mon.

NASH

STREET

FILED
 RECEIVED

MAR 5 1973

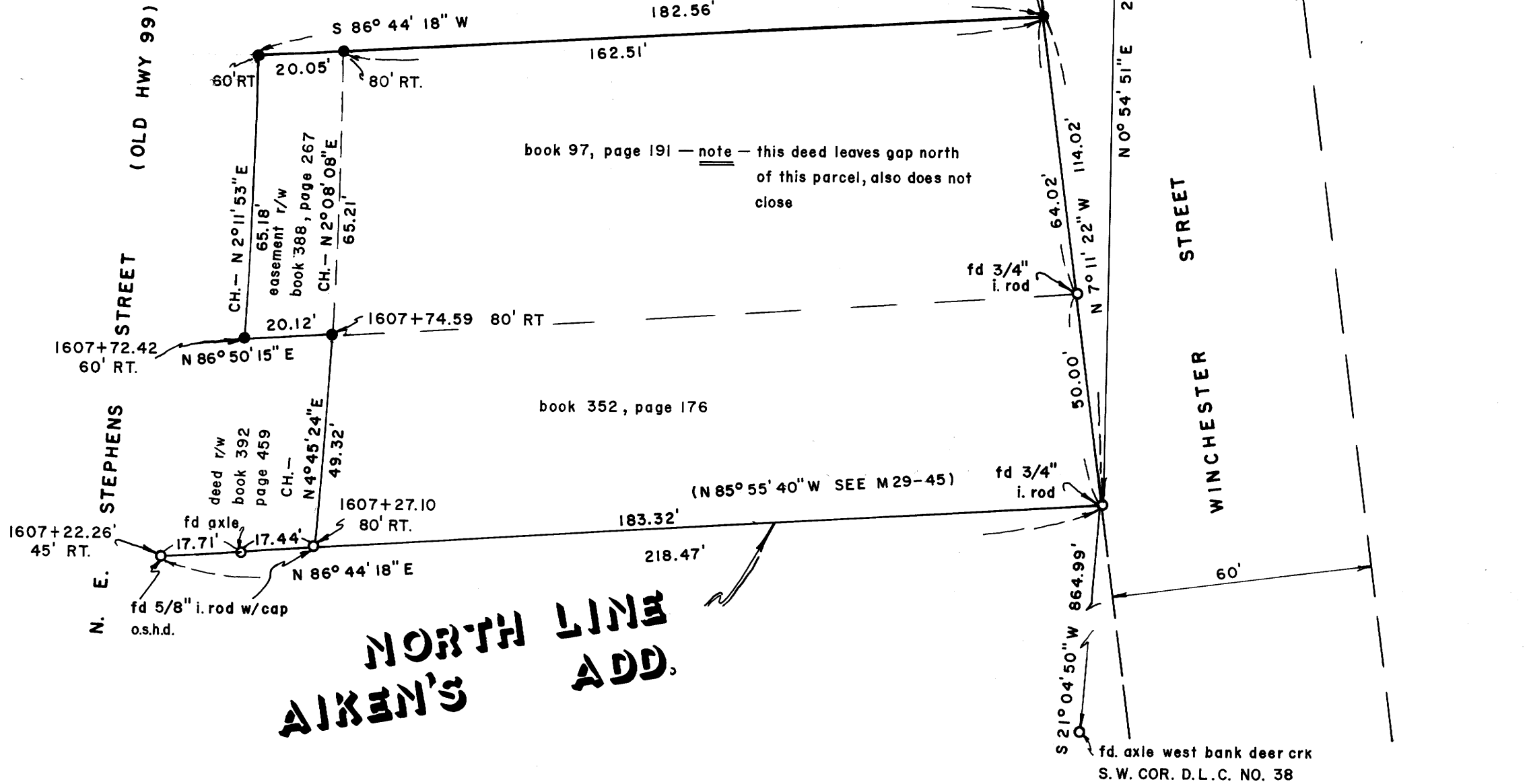
COUNTY SURVEYOR
 DOUGLAS COUNTY, ORE.

SURVEY TO ESTABLISH BOUNDARY LINES AS PER
 DEEDS AT BOOK 352, PAGE 176 AND BOOK 97
 PAGE 191, DOUGLAS COUNTY, OREGON, RECORDS.
 FOR BILL COCHRANE & P. BECKLEY

MARCH, 1973

LOCATED IN SECTION 18, T27S, R5W, WM.

SURVEY BY HAROLD BALL — CIVIL ENGINEER — ROSEBURG, ORE.



book 97, page 191 — note — this deed leaves gap north
 of this parcel, also does not
 close

book 352, page 176

(N 85° 55' 40" W SEE M 29-45)

**NORTH LINE
 AIKEN'S
 ADD.**



COUNTY SURVEYORS FILE DATA
 DO NOT REMOVE FROM OFFICE

MAP FILE M47-74

MAP FILE M47-74