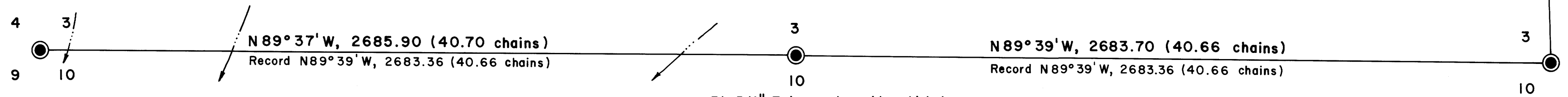


FILED
 RECEIVED
 1973
 COUNTY SURVEYOR
 DOUGLAS COUNTY, ORE.

Fd. brass cap mkd.
 County Surveyor's Office
 T21S, R5W
 1/4 S3, S2 1965
 From which a:
 60" Douglas fir BT
 Old stump completely rotted away
 Bears N88° E, 25.1 ft.
 20" Douglas fir BT
 Tree down, scribes vis.
 Bears N57° W, 15.0 ft.
 (Record 13.9 ft. to face)
 18" Douglas fir BT
 Bears N33° W, 19.2 ft.
 10" hemlock BT
 Bears N5° E, 21.7 ft.

Fd. 3/4" T-iron, alongside which I
 Set brass cap mkd.
 T21S, R5W, WM
 S4, S3, S9, S10 1973
 From which a:
 26" Douglas fir BT stump
 Bears N65° W, 16.5 ft.
 (To face)
 34" Douglas fir BT
 Face vis.
 Bears S5° W, 7.5 ft.
 32" Douglas fir BT stump
 Scribes vis.
 Bears N1° E, 15.0 ft.

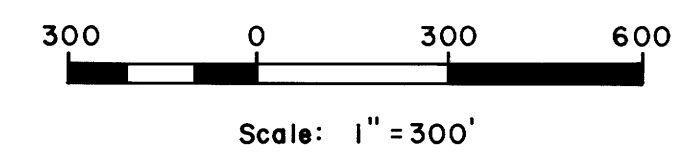


Fd. 3/4" T-iron, alongside which I
 Set brass cap mkd.
 T21S, R5W, WM
 1/4 S3, S10 1973
 From which a:
 26" Douglas fir BT
 Bears N27° E, 39.0 ft.
 26" Douglas fir BT
 Bears S47° W, 42.6 ft.

Fd. 3/4" T-iron, alongside which I
 Set brass cap mkd.
 T21S, R5W, WM
 S3, S2, S10, S11 1973
 From which a:
 10" chinquapin BT
 Bears S73° E, 25.3 ft.
 8" chinquapin BT
 Bears N53° E, 24.4 ft.
 10" madrone BT
 Bears S36° W, 25.5 ft.
 16" Douglas fir BT
 Bears N81 3/4° W, 8.9 ft.

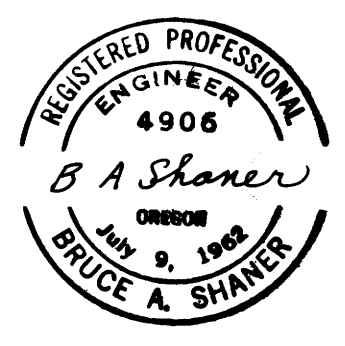
PROPERTY LINE SURVEY OF
 SECTION 3, T. 21 S., R. 5 W., W. M.
 U. S. Bureau of Land Management
 Roseburg, Oregon District

Shaner Engineering
 Scale: 1" = 300' February 12, 1973
 Contract No. 53500-CT2-293 (N)



LEGEND

- Corner found
- Random line only, no true line marked
- Dirt road
- Stream



Bearings based on
 Section 10 survey
 by Haines, 1957.
 See County Map
 File M7-64.

COUNTY SURVEYORS FILE DATA
 DO NOT REMOVE FROM OFFICE

MAP FILE M47-72

MAP FILE M47-72