

SURVEY IN SECTION 2, T.29S., R.6W., W.M.
 SURVEYED FOR - BILL SHEA
 SURVEYED BY - DON E. GARRETT

COUNTY SURVEYORS FILE DATA
 DO NOT REMOVE FROM OFFICE

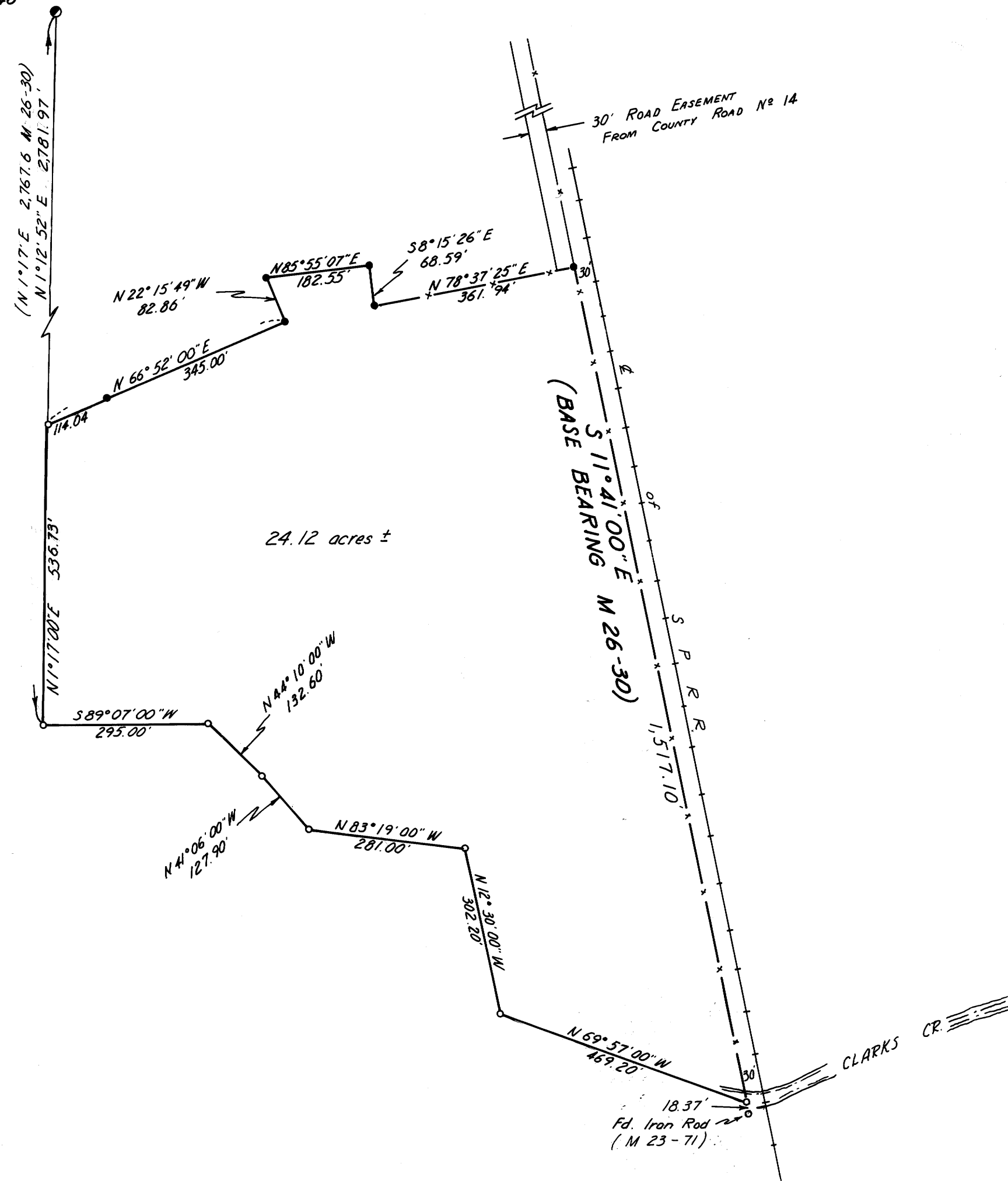
FILED
 RECEIVED 74
 MAY 1973
 COUNTY SURVEYOR
 DOUGLAS COUNTY, ORE.

February 1973

Scale 1" = 200'

•- Denotes 5/8" I. Rod Set

NW Corner J.A. Clark D.L.C. # 40
 T.29S., R.6W.



REGISTERED
 PROFESSIONAL
 LAND SURVEYOR
 Don E. Garrett
 OREGON
 JULY 14, 1961
 DON E. GARRETT
 544

M47-71

M47-71