

L-27W

COUNTY SURVEYORS FILE DATA
DO NOT REMOVE FROM OFFICE

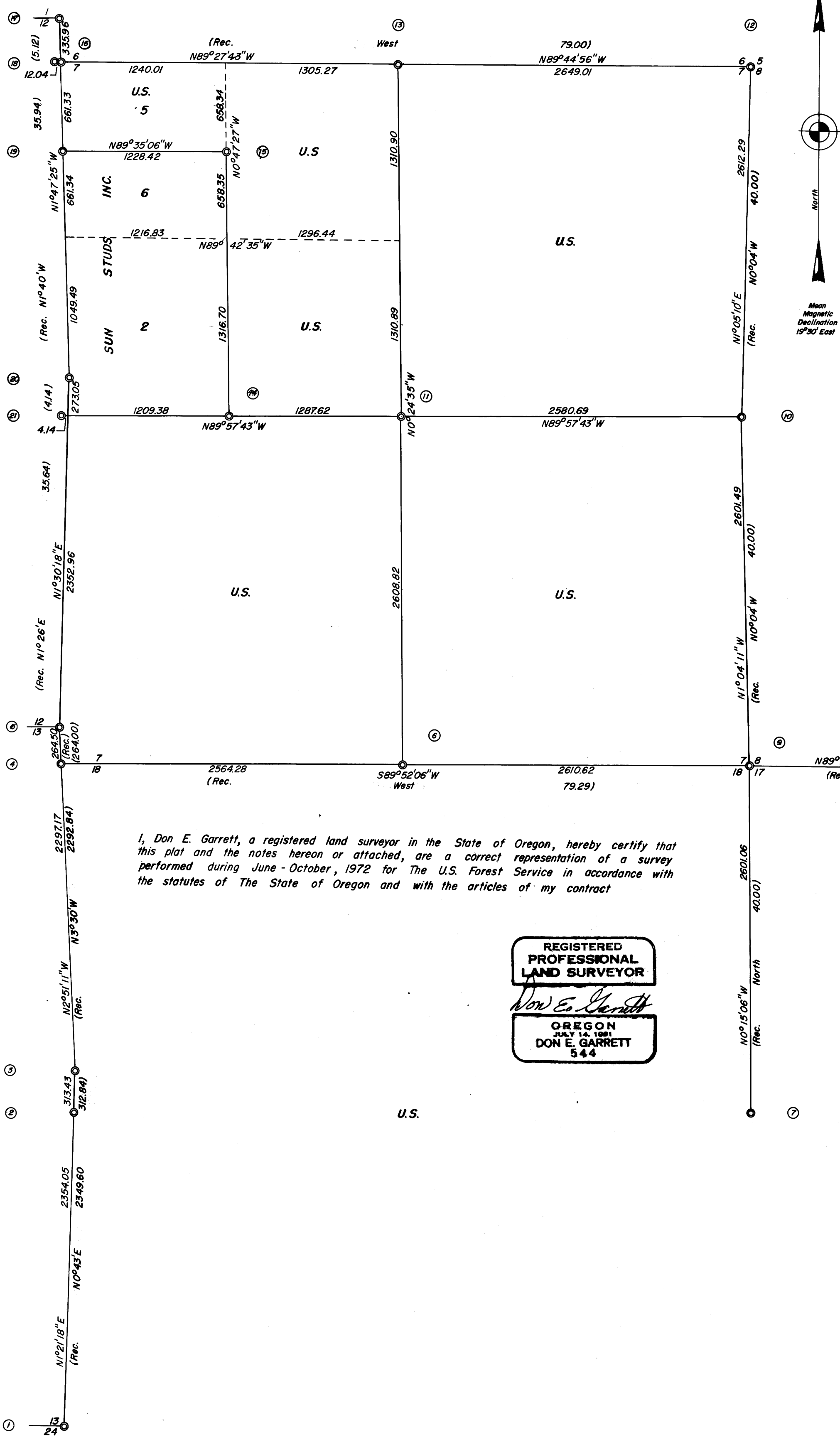
SURVEY FOR THE
UNITED STATES OF AMERICA

Sections 7, 8, 17 & 18, Township 26 South, Range 1 West, Willamette Meridian

October 1972

Scale 1" = 600'

GLIDE LAND SURVEY NO. 1 CONTRACT NO. 003585N.
Field Books Referenced Under Contract No. 003585N Books 1, 2, 3 & 4.
Monuments set consist of a 2"x36" galvanized iron pipe, flared at the bottom, with a 3" brass cap riveted to the top.
Bearings are based on solar observations taken September 2 & 16, 1972.



- ① Found Brass Cap Marked County Surveyors Office, S13, S24, T26S, R2W, 1963
20" Fir Bears S27°W 7.9' (Chopped Out, No Scribe Showing)
9" D. Fir Bears S63°W 11.4' (Shows Scar)
20" D. Fir Bears N67°W 9.2'
- ② Set Brass Cap Marked T26S, RIW, 1/4 S18, 1972, RPLS 544
14" Fir Bears N32°E 58.4' Scribed 1/4 S18 BT
13" Fir " S21 1/2°E 60.2' Scribed 1/4 S18 BT
- ③ Set Brass Cap Marked T26S, R2W, 1/4 S13, 1972, RPLS 544
6" Fir Bears S2°W 128.5' Scribed 1/4 S13 BT
6 Ft. Steel Fencepost With U.S. Forest Service Signs Nos. 54-2 & 54-4
Bears N3°W 5.0'
- ④ Set Brass Cap Marked T26S, S7, S18, RIW, T26S, R2W, S13, 1972, RPLS 544
8" Fir Bears N52°E 29.1' Scribed T26S, RIW, S7, BT
7" Fir Bears S18 1/2°E 26.9' Scribed T26S, RIW, S18, BT
- ⑤ Found Brass Cap Marked County Surveyors Office, S12, S13, T26S, R2W, 1966
9" Fir Bears S45°W 21 Lks. (Shows Scar)
28" Fir Bears N54°W 34.9' (Shows Bark Scribe)
- ⑥ Set Brass Cap Marked T26S, RIW, 1/4, S7, S18, 1972, RPLS 544
16" Fir Bears N54 3/4°W 11.9' Scribed 1/4 S7 BT
15" Fir Bears S46 1/4°E 6.2' Scribed 1/4 S18 BT
- ⑦ Found Brass Cap Marked County Surveyors Office 1/4 S17, S18, T26S, RIW, 1972
9" D. Fir Bears N51°E 24.2' (Shows Scribe)
6" D. Fir Bears N89°W 9.2'
- ⑧ Found Brass Cap Marked County Surveyors Office, T26S, RIW, 1/4 S8, S17, 1970
18" Fir Bears N50°E 14.5' (Shows Scar)
15" Fir Bears S65°W 19.1' (Shows Scribe)
12" Cedar Bears S64°W 39.0'
- ⑨ 6" Below Road Surface Set Brass Cap Marked T26S, RIW, S7, S8, S17, S18, 1972, RPLS 544
15" Fir Bears S68°W 52.5' Scribed T26S RIW S18 BT
9" Fir Bears N32°W 36.7' Scribed T26S RIW S7 BT
18" Fir Bears N27°E 21.0' Scribed T26S RIW S8 BT
8" Fir Bears S55 1/2°E 78.4' Scribed T26S RIW S17 BT
- ⑩ Found Brass Cap Marked County Surveyors Office 1/4 S7, S8, T26S, RIW, 1970
50" Fir Bears N6°W 55.4' (Shows Scribe)
12" Fir Bears S82°W 5.9' " "
14" Fir Bears N51°E 10.7' " "
- ⑪ 60" ± Above Road Set Brass Cap Marked T26S, RIW, C1/4, S7, 1972, RPLS 544
13" Fir Bears S28°W 12.5' Scribed C1/4 S7 BT
25" Fir Bears N36°E 23.2' Scribed C1/4 S7 BT
- ⑫ Found Brass Cap Marked County Surveyors Office T26S, RIW, S5, S6, S7, S8, 1970
18" D. Fir Bears N49°W 14.2' (Shows Scribe)
12" D. Fir Bears N17°E 13.7' " "
14" D. Fir Bears S67°E 6.6' " "
6" D. Fir Bears S20°W 18.7' " "
0BT: 14" Fir Bears N33°E 57.4'
" 40" Fir Bears S4 1/2°W 71.3'
" 60" Fir Bears S53°E 83.2'
- ⑬ Found Brass Cap Marked County Surveyors Office T26S, RIW, 1/4 S6, S7, 1972
16" Cedar Bears N1°W 6.1' (Shows Scribe)
11" Fir Bears S45°E 6.8'
- ⑭ Set Brass Cap Marked T26S, RIW, C-C W1/6, S7, 1972, RPLS 544
7" Fir Bears S34°W 3.3' Scribed CW 1/6 S7 BT
8" Fir Bears N6°E 19.8' Scribed CW 1/6 S7 BT
- ⑮ Set Brass Cap Marked T26S, RIW, CN NW 1/64, S7, 1972, RPLS 544
6" Fir Bears S16°W 8.1' Scribed CN NW 1/64 S7 BT
9" Fir Bears N71 1/2°W 18.7' Scribed CN NW 1/64 S7 BT
- ⑯ Set Brass Cap Marked T26S, S6, S7, RIW, T26S, R2W, S12, 1972, RPLS 544
13" Fir Bears N6°E 10.1' Scribed T26S RIW S6 BT
11" Fir Bears S48 1/2°E 32.8' Scribed T26S RIW S7 BT
- ⑰ Found Brass Cap Marked County Surveyors Office T26S, R2W, S1, S12, 1961
13" Fir Bears N30°W 21.5' (Shows Scar)
12" Cedar Bears S86°W 8.4' (Shows Scribe)
- ⑱ CC S6, S7, T26S, RIW Found Broken Basalt Stone, 16"x12"x6", Set Approx. 12" in Ground. 1/2" I. Pipe in Place on East Side of Stone.
9" Madrone Bears S25°E 28 Lks. Tree has been opened. No Scribing found. See 1968 Cadastral Resurvey of the East Line of Sect. 12, T26S, R2W.
- ⑲ Set Brass Cap Marked T26S, RIW, N-N 1/64, S7, 1972, RPLS 544
14" Madrone Bears N12°E 14.1' Scribed NN 1/64 S7 BT
11" Chinquapin Bears S24°E 14.9' Scribed NN 1/64 S7 BT
- ⑳ Found Brass Cap Marked County Surveyors Office, T26S, R2W, 1/4 S12, 1961
16" Cedar Bears N80°W 18.0'
21" Fir Bears S43°W 61.2'
- ㉑ Found Brass Cap Marked County Surveyors Office, T26S, RIW, 1/4 S7, 1961
22" Chinquapin Bears N28°E 48.2' (Shows Scribe)
8" Cedar Bears S87 3/4°E 39.3'

I, Don E. Garrett, a registered land surveyor in the State of Oregon, hereby certify that this plat and the notes hereon or attached, are a correct representation of a survey performed during June - October, 1972 for The U.S. Forest Service in accordance with the statutes of The State of Oregon and with the articles of my contract

REGISTERED
PROFESSIONAL
LAND SURVEYOR
Don E. Garrett
OREGON
JULY 14, 1981
DON E. GARRETT
544