

SURVEY TO SET PROPERTY CORNERS & DESCRIPTION SITUATED IN SEC. 17, T. 26 S. R. 3 W., W. M. FOR G. LONG & L. BROOKS BY BAUGHMAN SURVEYING SERVICE

COUNTY SURVEYORS FILE DATA
DO NOT REMOVE FROM OFFICE

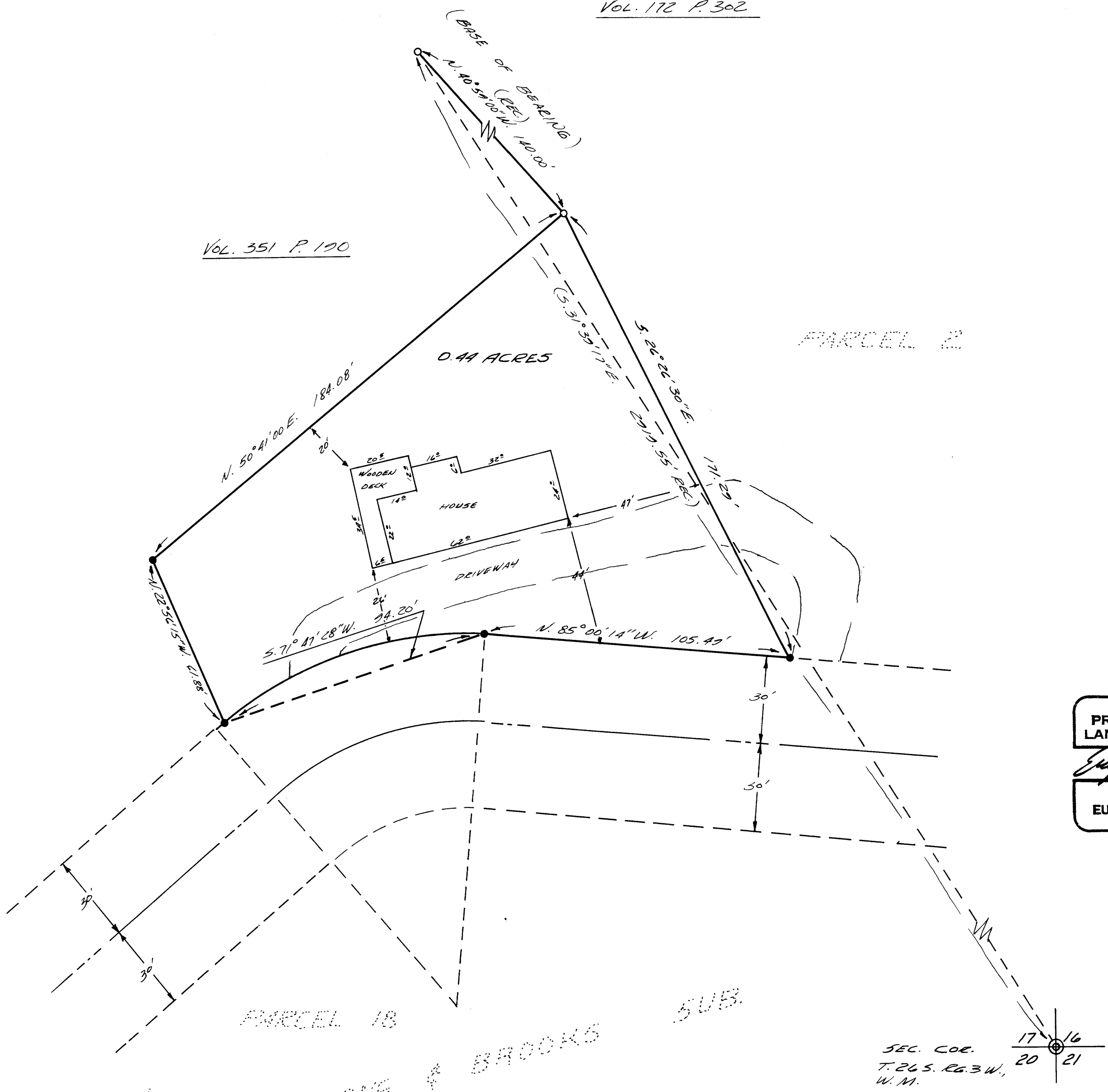
FILED
FEB 20 1973
COUNTY SURVEYORS
OFFICE (W.M.)

FEBRUARY 1973

SCALE 1" = 30'

Vol. 172 P. 302

Vol. 351 P. 120



LEGEND:

- Fd 5/8" I.R.
- SET 5/8" I.R.

REGISTERED
PROFESSIONAL
LAND SURVEYOR

Eugene A. Bloom

OREGON
MAY 18, 1960
EUGENE A. BLOOM
492

PARCEL 18

LONG & BROOKS
SUB.

SEC. COR. 17 16
20 21
T. 26 S. R. 3 W.,
W. M.