

**SURVEY FOR PROPERTY CORNERS
 IN LOTS 3 & 4, BLK. 12, AMENDED MAP
 OF JONES ADD. TO ROSEBURG
 SITUATED IN SEC. 13, T.27S., R.6W., W.M.
 FOR: MR. HAROLD GLOVER
 BY: BAUGHMAN SURVEYING SERVICE
 FEBRUARY 1973 SCALE 1" = 50'**

DO NOT REMOVE FROM OFFICE

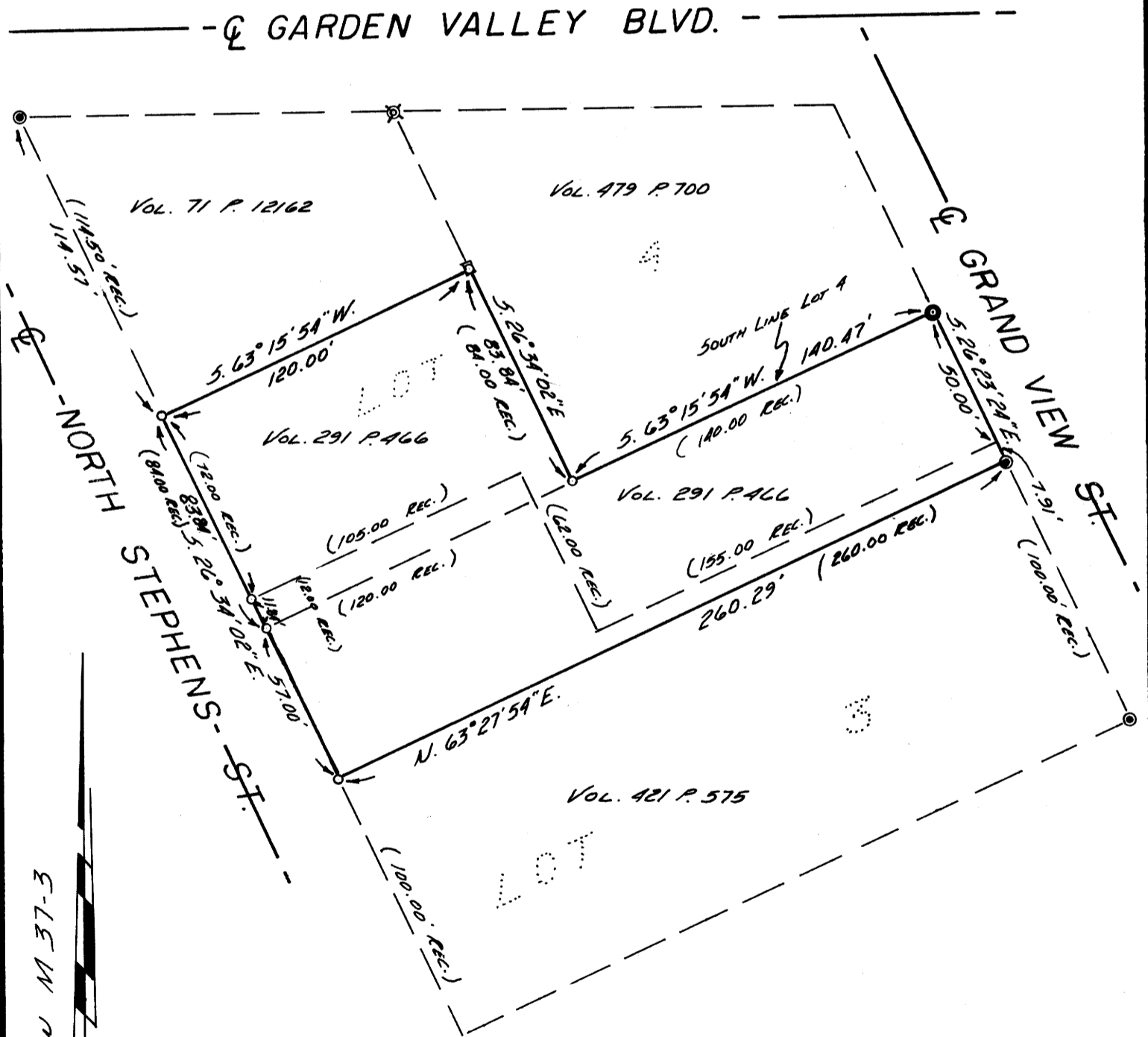
FILED
 RECEIVED

FEB 20 1973

COUNTY SURVEYOR
 DOUGLAS COUNTY, ORE.

REGISTERED
 PROFESSIONAL
 LAND SURVEYOR

OREGON
 MAY 12, 1960
 EUGENE A. BLOOM
 492



BASED ON M 37-3

LEGEND:

- FD. 5/8" I.R.
- SET CONCRETE NAIL
- ⊗ FD. X CHISELED IN CONCRETE
- SET 5/8" I.R.
- FD. PUNCH HOLE IN CONCRETE
- ⊗ FD. X IN CONCRETE RE-SET CONCRETE NAIL