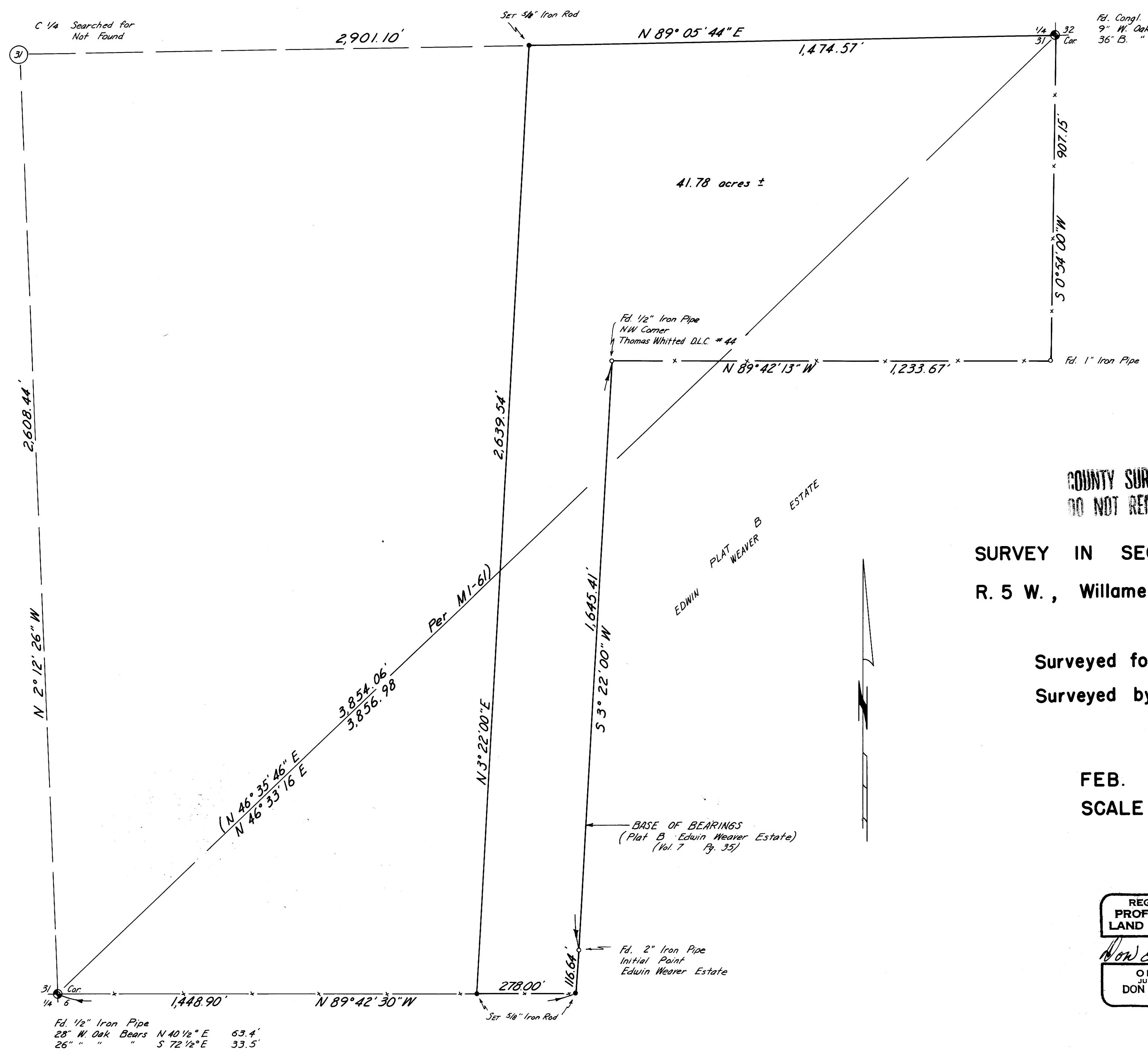


COUNTY SURVEYOR
DOUGLAS COUNTY, OREGON



Fd. Congl. Stone
9" W Oak Bears N 59° W 57.5'
36" B. " " S 15° E 15.0'

COUNTY SURVEYORS FILE
DO NOT REMOVE FROM OFFICE

SURVEY IN SECTION 31, T. 29 S.,
R. 5 W., Willamette Meridian

Surveyed for — JIM LEWIS
Surveyed by — DON E. GARRETT

FEB. 1973
SCALE 1" = 200'

REGISTERED
PROFESSIONAL
LAND SURVEYOR
Don E. Garrett
OREGON
JULY 14, 1961
DON E. GARRETT
544