

M 47-61

N.E. 1/4, SECTION 17, T.24S.R.3W.W.M.

FOR: WEYERHAEUSER TIMBER CO.

BY: BAUGHMAN SURVEYING SERVICE

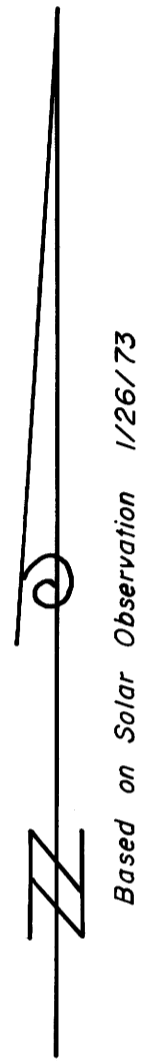
FEBRUARY 1973

COUNTY SURVEYORS FILE BOOK
DO NOT REMOVE FROM OFFICE

FILED
RECEIVED

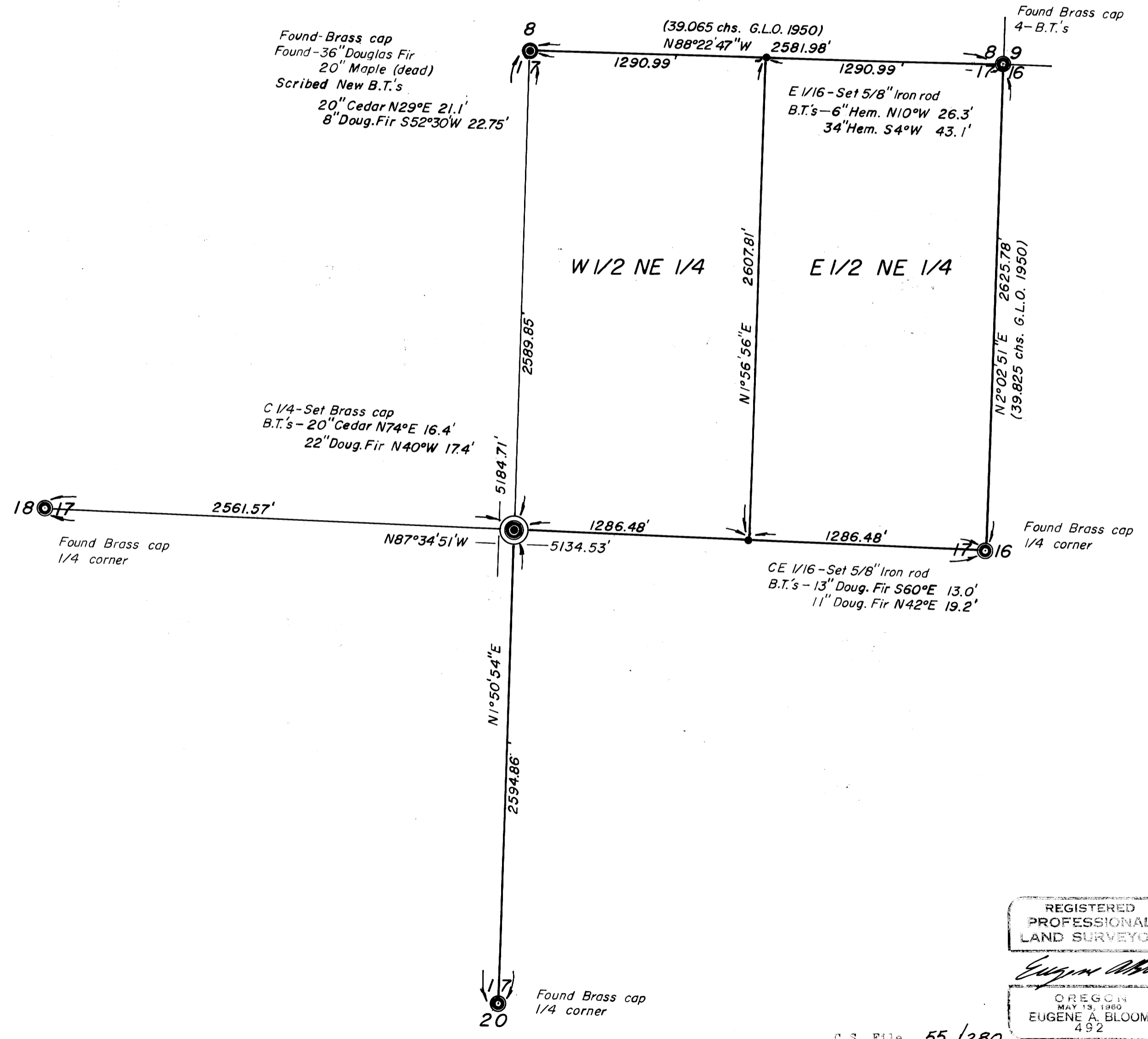
1973

COUNTY SURVEYOR
DOUGLAS COUNTY, ORE.



Based on Solar Observation 1/26/73

SCALE: 1" = 500'



REGISTERED
PROFESSIONAL
LAND SURVEYOR

Eugene A. Bloom
OREGON
MAY 13, 1960
EUGENE A. BLOOM
492

C.S. File 55/280

Map File M.47-61