

SURVEY MAP DEPENDENT RESURVEY AND SUBDIVISION OF SECTION 14 of TWP. 31S. RGE. 8 W.

FILED
RECEIVED 2/7

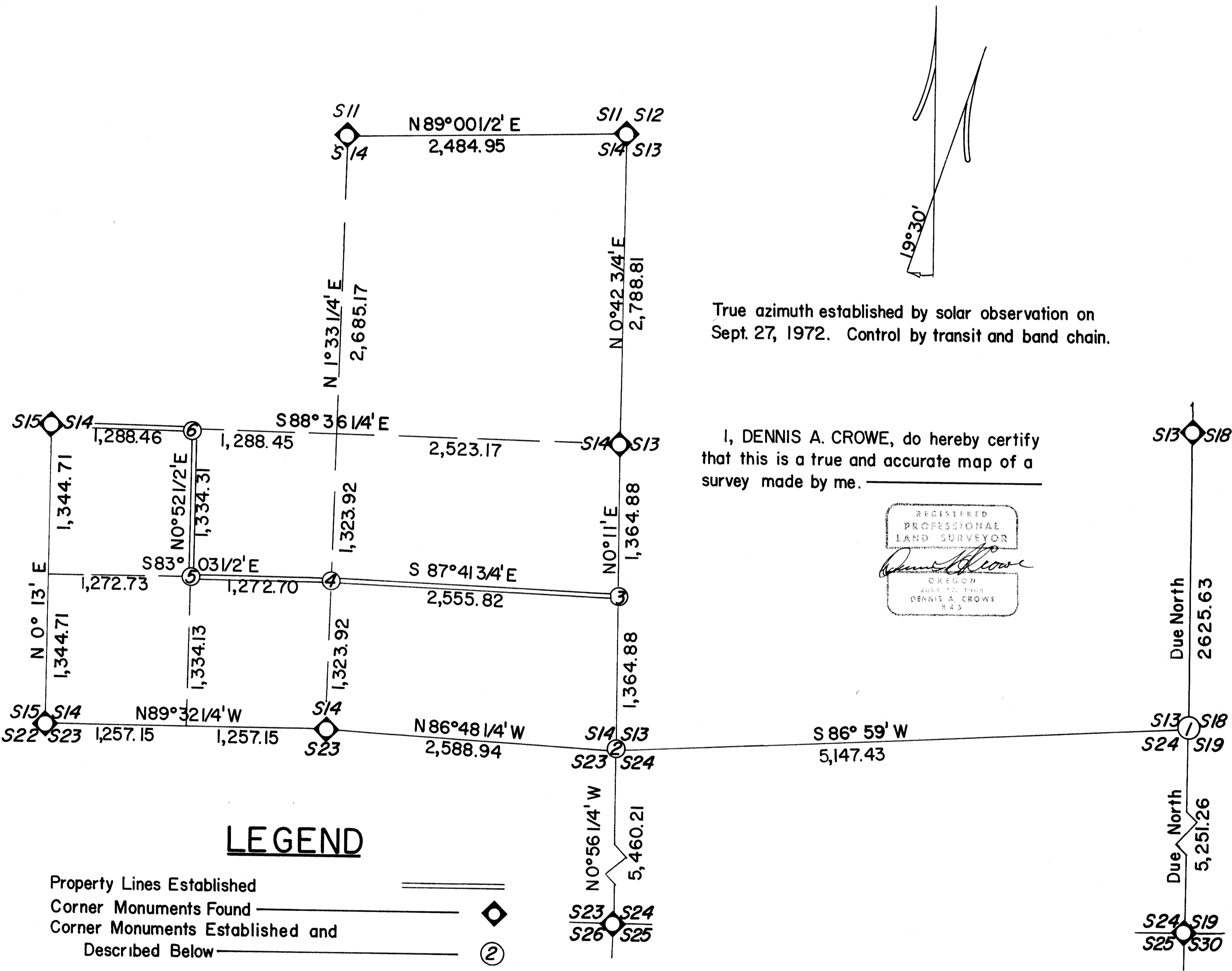
1973

COUNTY SURVEYOR
DOUGLAS COUNTY, OREGON

Scale: 1" : 660'

U.S. PLYWOOD CORP.

JANUARY 1973



FIELD NOTES FOR THE DEPENDENT RESURVEY
AND SUBDIVISION OF SEC 14 OF
TOWNSHIP 31 SOUTH, RANGE 8 WEST,
OF THE WILLAMETTE MERIDIAN

Retracement of the east boundary of Township 31 South, Range 8 West:

Beginning at the brass-cap iron-pipe set by the County Surveyor's Office in 1966, being the section corner common to sections 24 and 25 in T31S, R8W, and sections 19 and 30 in T31S, R7W. Thence running north 5251.26 feet to the section corner common to sections 13 and 24 in T31S, R8W, and sections 18 and 19 in T31S, R7W where a diligent search was made yielding no acceptable evidence of adequate corner monumentation. Thence continue north 2625.63 feet to the BCIP being the quarter-section corner between section 13 in T31S, R8W and section 18 in T31S, R7W. Said monument also being set by County Surveyor's Office in 1966. Thence return south 2625.63 feet to research and monument the section corner common to sections 13 and 24 in T31S, R8W, and sections 18 and 19 in T31S, R7W. Said corner being monumented with a 36 inch aluminum cap, iron pipe driven 24 inches into the ground with corner accessories as follows:

An 8" Ponderosa pine scribed on the wood bearing S23E, 21.5 ft.
An 8" fir scribed on the wood bearing N62E, 19.5 ft.
No other acceptable accessories available

#66 T31-8
#95 T31-7

Establishment of section corner common to sections 13, 14, 23
and 24 in T31S, R8W, W.M.:

Following a diligent search for the original above stated corner, yielding no evidence of acceptable corner monumentation, said corner was declared lost. Therefore set new corner monument at double-proportionate distance between the above previously described section corner common to sections 13 and 24 in T31S, R8W, and sections 18 and 19 in T31S, R7W, and the BCIP quarter-section corner between sections 14 and 23 in T31S, R8W for departure, and between the BCIP section corner common to sections 23, 24, 25 and 26 in T31S, R8W, and the BCIP quarter-section corner between sections 13 and 14 in T31S, R8W for latitude. Said corner was monumented by ACIP 36" long and driven 24" into ground with corner accesories as follows:

- An 18" fir scribed on the wood bearing S3E, 28.5 ft.
- An 11" Madrone scribed on the wood bearing S57W, 2 ft.
- A 13" fir scribed on the wood bearing N35W, 10 ft.
- A 9" Madrone scribed on the wood bearing N27½E 10.5 ft.

#67 T31-8

Subdivision of section 14 T31S, R8W:

Point of beginning of this survey is the BCIP quarter-section corner between sections 14 and 15 in T31S, R8W. Said corner being a Cadastral Engineer BCIP. Thence S88°36¼E, 1288.46 feet to the center-west sixteenth corner in section 14. Said corner falling in right-of-way of private logging road and no monument was set. Said corner also lying midway between the quarter-section

corner between sections 14 and 15 and the unmonumented center-quarter corner of section 14. Thence $S0^{\circ}52\frac{1}{2}'E$, 35.68 feet to the witness corner of the center-west sixteenth corner of section 14. Said witness corner being monumented by an ACIP 36" long and driven 24" into ground with corner accessories as follows:

A 32" fir scribed on the bark bearing $S46W$, 26 ft.
An 11" fir scribed on the wood bearing $N75W$, 17 ft.

Thence continue $S0^{\circ}52\frac{1}{2}'E$, 1298.63 feet to the southwest sixteenth corner of section 14. Said corner falls at the intersection of center-lines of the south-west quarter of section 14. Said corner being monumented by an ACIP 36" long and driven 24" into ground with corner accessories as follows:

A 10.5" fir scribed on the wood bearing $N78E$, 2.5 ft.
An 18" fir scribed on the bark bearing $S39W$, 21 ft.

Thence $S83^{\circ}03\frac{1}{2}'E$, 1272.70 feet to the center-south sixteenth corner of section 14. Said corner falling midway between the quarter-section corner between sections 14 and 23 and the unmonumented center-quarter corner of section 14. Said corner being monumented by an ACIP 36" long and driven 24" into ground with corner accessories as follows:

A 40" fir scribed on the wood bearing $S43E$, 21 ft.
A 30" fir scribed on the bark bearing $S67W$, 30 ft.

Thence $S87^{\circ}41\frac{3}{4}'E$, 2555.82 feet to the south-sixteenth corner between sections 13 and 14. Said corner lying midway between the BCIP quarter-section corner between sections 13 and 14, and the double-proportioned section corner common to sections 13, 14,

23 and 24 in T31S, R8W as previously described. Said corner being monumented by an ACIP 36" long driven 24" into ground with corner accessories as follows:

A 15" fir scribed on the wood bearing N9E, 22 ft.
A 16" fir scribed on the wood bearing East, 24.5 ft.

Thence $S0^{\circ}11'W$, 1364.88 feet to the section corner common to sections 13, 14, 23 and 24 in T31S, R8W. Thence $N86^{\circ}48\frac{1}{2}'W$, 2588.94 feet to the quarter-section corner between sections 14 and 23, thence continuing $N89^{\circ}32\frac{1}{4}'W$, 1257.15 feet to the unmonumented west-sixteenth corner between sections 14 and 23, thence continuing on same bearing 1257.15 feet to the BCIP section corner common to sections 14, 15, 22 and 23 in T31S, R8W. Thence $N0^{\circ}13'E$, 1344.71 feet to the unmonumented south-sixteenth corner between sections 14 and 15, thence continue on same bearing 1344.71 feet more or less to the point of beginning.

I Dennis A. Crowe do hereby certify that this is a true and correct description of a dependent resurvey and subdivision made by me in accordance with law.

REGISTERED
PROFESSIONAL
LAND SURVEYOR

Dennis A. Crowe
OREGON
JULY 12, 1968
DENNIS A. CROWE
845