

SURVEY TO SET LOT CORNERS, LOT 4,
BLOCK "C", BROWN'S ADD. TO OAKLAND
DOUGLAS COUNTY, ORE.

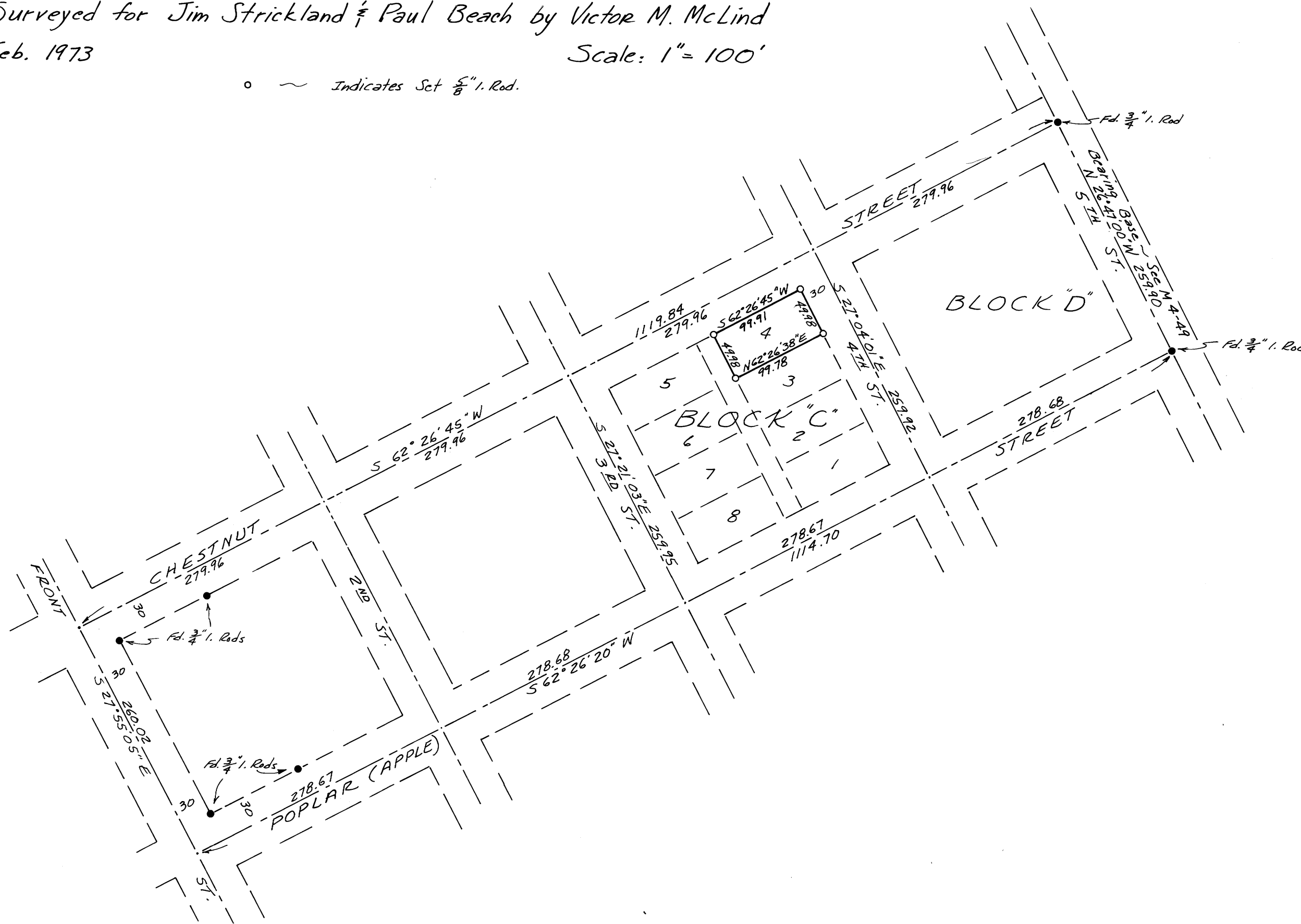
COUNTY SURVEYORS FILE DATA
DO NOT REMOVE FROM OFFICE

FILED
RECORDED
95 12873
COUNTY SURVEYOR
DOUGLAS COUNTY, ORE.

Surveyed for Jim Strickland & Paul Beach by Victor M. McLind
Feb. 1973

Scale: 1" = 100'

o ~ Indicates Set $\frac{5}{8}$ " Rod.



REGISTERED
PROFESSIONAL
LAND SURVEYOR
Victor M. McLind

M 47 - 59

M 47 - 59