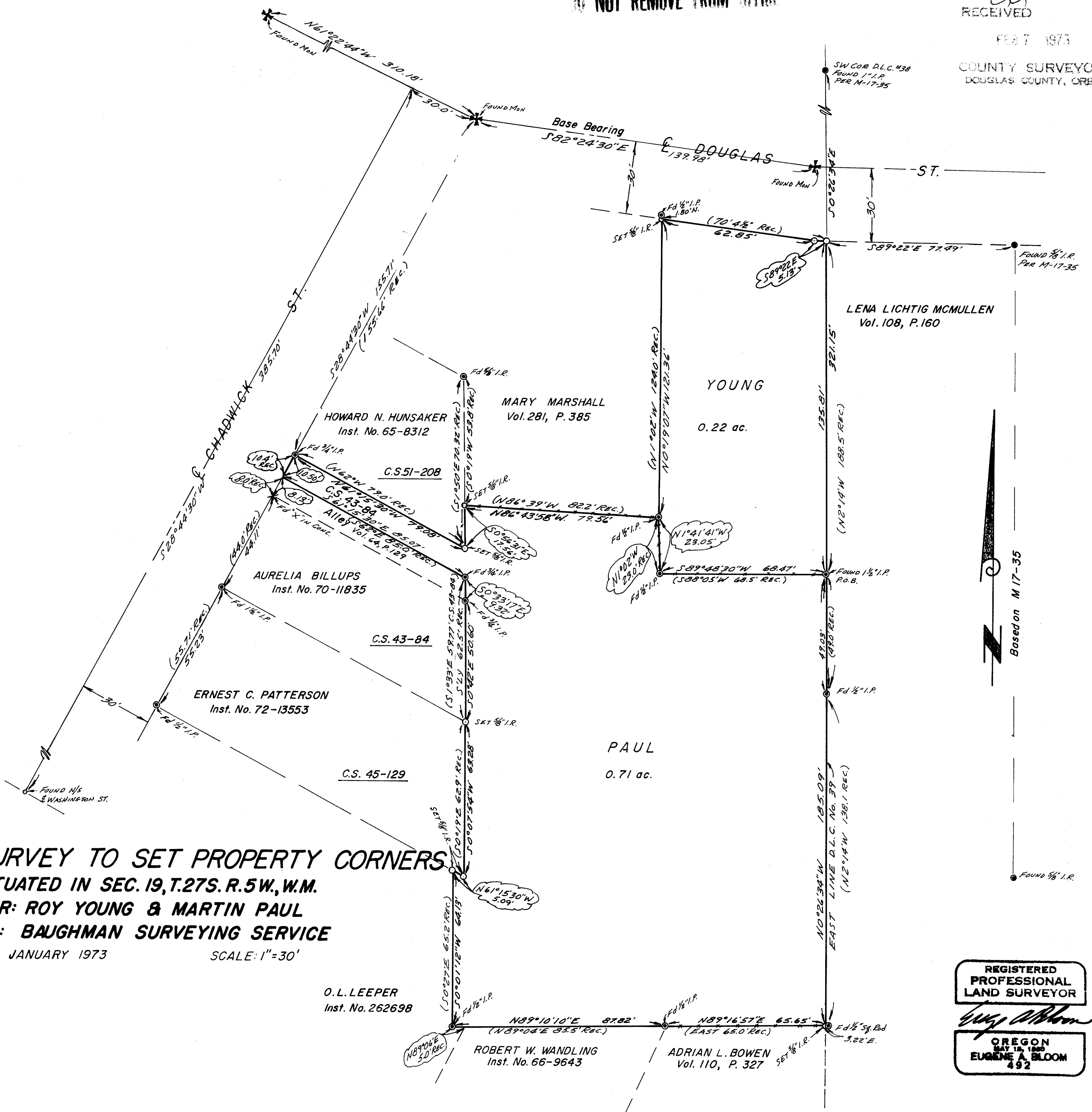


COUNTY SURVEYORS FILE
DO NOT REMOVE FROM OFFICE

FILED
RECEIVED

FEB 7 1973

COUNTY SURVEYOR
DOUGLAS COUNTY, ORE.



SURVEY TO SET PROPERTY CORNERS
SITUATED IN SEC. 19, T.27S. R.5W., W.M.
FOR: ROY YOUNG & MARTIN PAUL
BY: BAUGHMAN SURVEYING SERVICE

JANUARY 1973 SCALE: 1"=30'

REGISTERED
PROFESSIONAL
LAND SURVEYOR

Eugene A. Bloom
 OREGON
 MAY 18, 1960
 EUGENE A. BLOOM
 492

E.A.B.