

SURVEY TO SET PROPERTY CORNERS

FOR: W. WEAVER

BY: BAUGHMAN SURVEYING SERVICE

SITUATED IN SEC.'S 32 & 33, T.29S. R.5W.W.M.

JANUARY 1973

SCALE: 1"=100'

COUNTY SURVEYORS FILE DATA

DO NOT REMOVE FROM OFFICE

[Handwritten Signature]

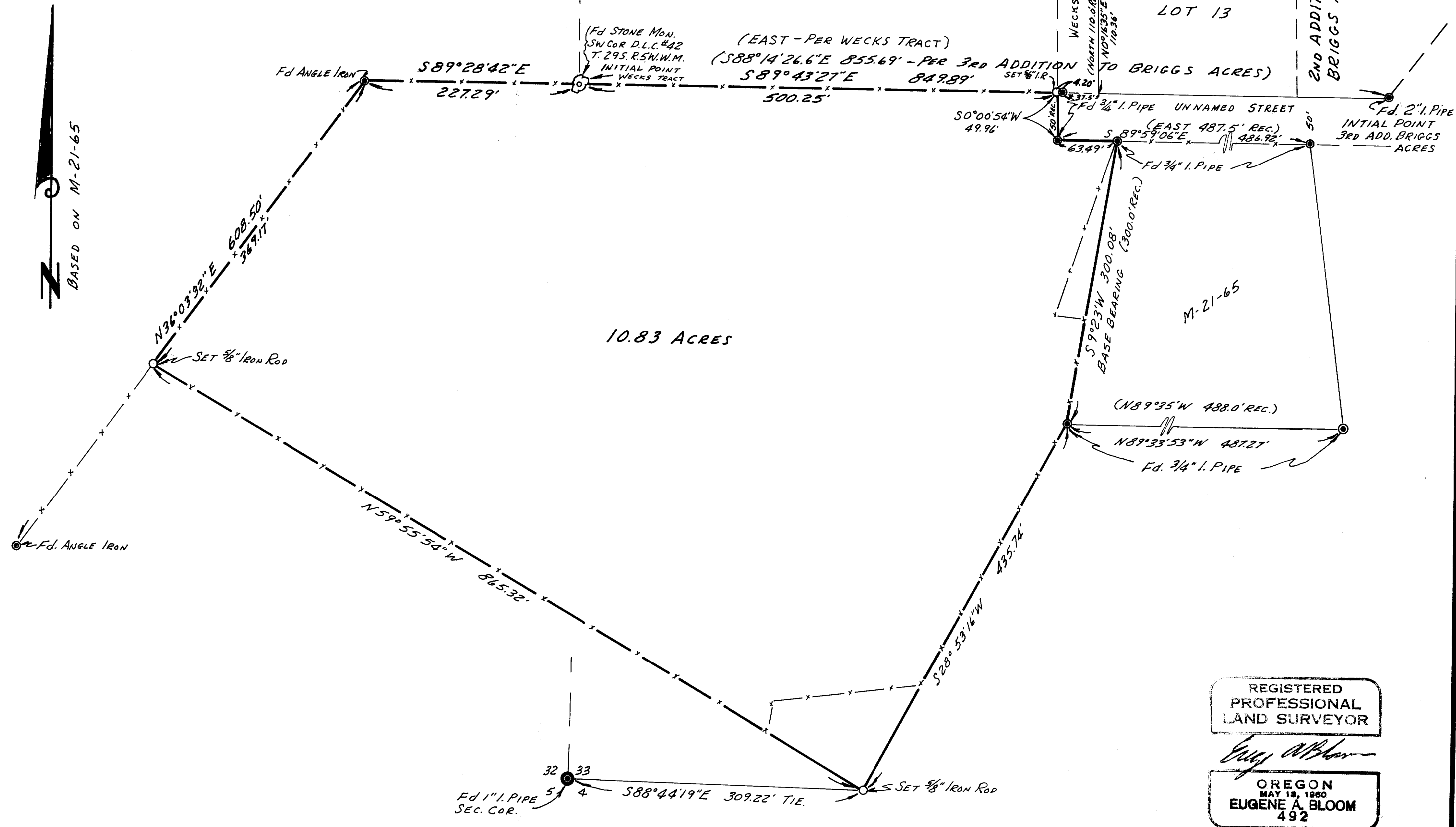
1973

CLATSOP COUNTY, ORE.

WECKS TRACT
VOL. 6, Pg. 59
LOT 14

LOT 13

2ND ADDITION TO
BRIGGS ACRES



REGISTERED
PROFESSIONAL
LAND SURVEYOR

Eugene A. Bloom

OREGON
MAY 13, 1980
EUGENE A. BLOOM
492

MAP FILE M47-50

MAP FILE M47-50