

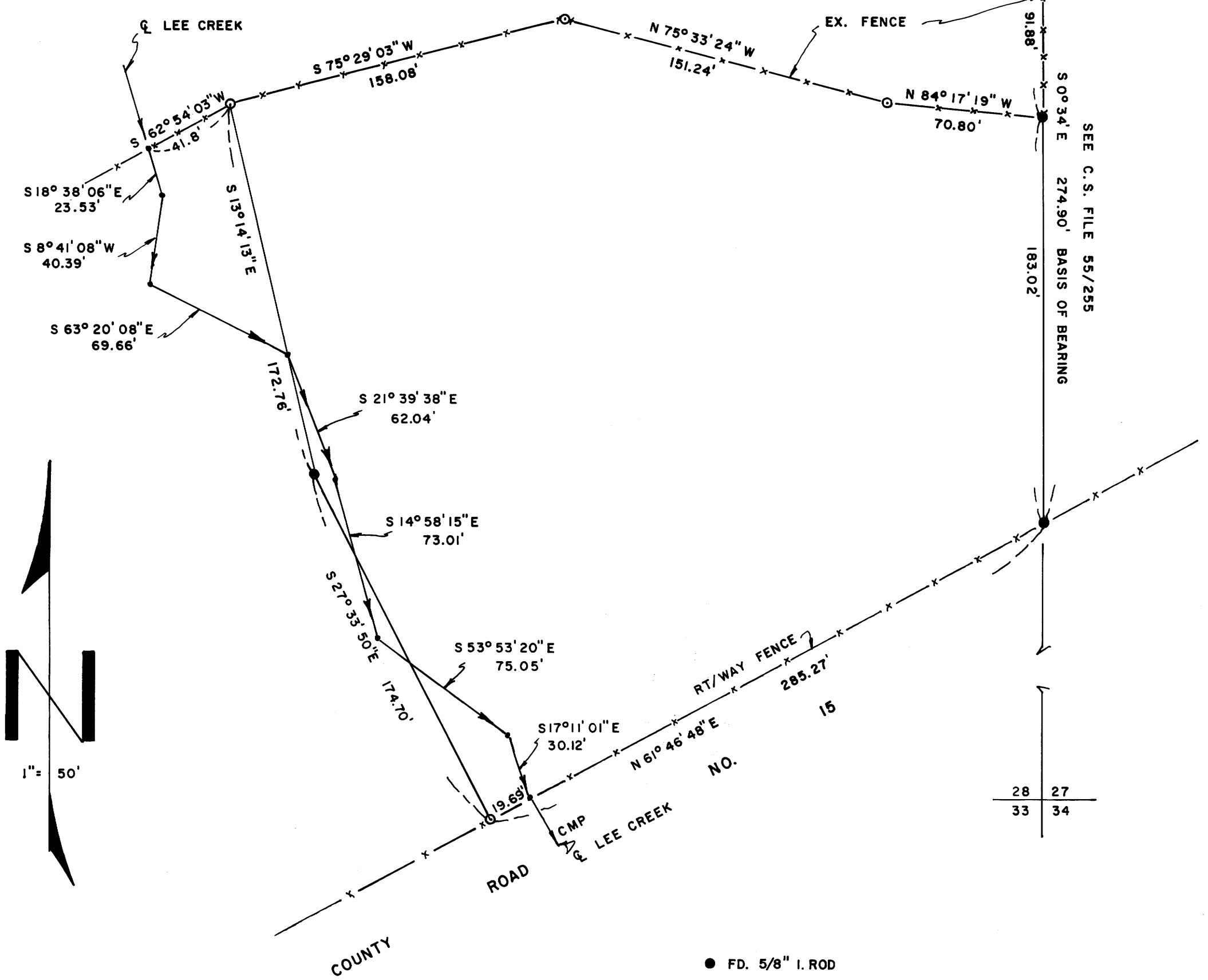
FILED
RECEIVED 27

COUNTY SURVEYORS FILE DATA
DO NOT REMOVE FROM OFFICE
COUNTY SURVEYOR
DOUGLAS COUNTY, ORE.

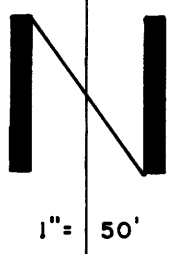
SURVEY TO ESTABLISH BOUNDARY
AGREEMENT LINE FOR RAY CAMBRON
LOCATED IN SE 1/4 OF SEC 28, T28S, R4W, WM
JAN, 1973

BY HAROLD BALL - CIVIL ENGINEER - ROSEBURG, ORE.

FD. BRASS CAP MON.
NE COR, SE 1/4, SE 1/4, SECTION 28, T28S, R4W, WM



SEE C.S. FILE 55/255
S 0° 34' E 274.90' BASIS OF BEARING



28	27
33	34

- FD. 5/8" I. ROD
- SET 5/8" I. ROD

MAP FILE M47 - 43