

SURVEY IN SECTION 7, T29S, R6W, WM., DOUGLAS CO., ORE.

Surveyed for Western States Farms and Ranches by Victor M. McLind

January 1973

FILED
RECEIVED

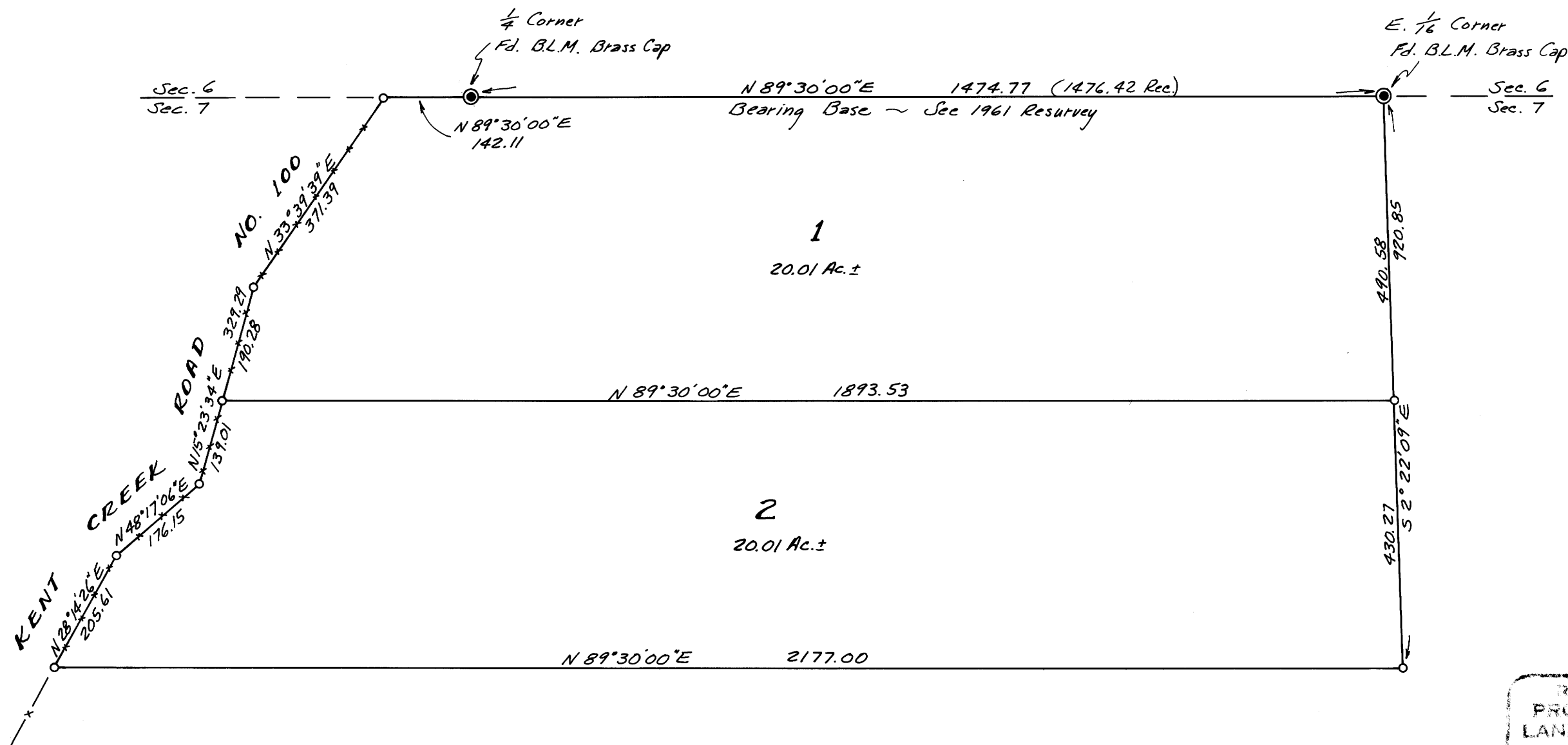
JAN 1973

COUNTY SURVEYOR
DOUGLAS COUNTY, ORE.

Scale: 1"=200'

COUNTY SURVEYORS FILE DATA
DO NOT REMOVE FROM OFFICE

o ~ Indicates Set $\frac{5}{8}$ " Iron Rod



REGISTERED
PROFESSIONAL
LAND SURVEYOR

Victor M. McLind

OREGON
JAN 1973
VICTOR M. MCLIND
194

MAP FILE M47-41

MAP FILE M47-41