

COUNTY SURVEYORS FILE DATA
DO NOT REMOVE FROM OFFICE

SURVEY IN D.L.C. # 42, SEC. 3, T28S, R7W, W.M., DOUGLAS CO., ORE.

Surveyed for Tom Zoeter by Victor M. McLind

JANUARY 1973

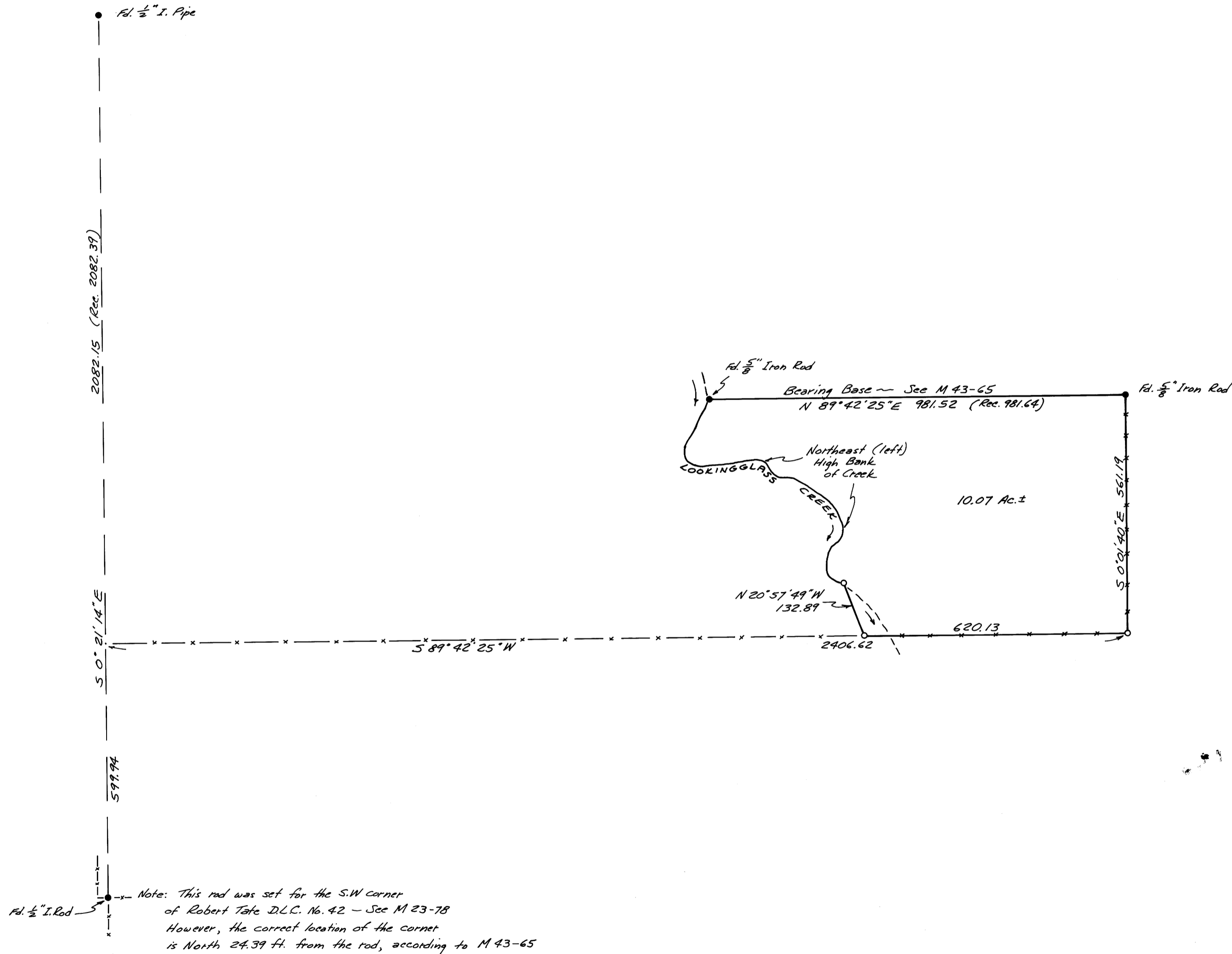
SCALE: 1" = 200'

FILED
RECEIVED

JAN 17 1973

COUNTY SURVEYOR
DOUGLAS COUNTY, ORE.

o ~ Indicates Set $\frac{5}{8}$ " x 30° Iron Rod



REGISTERED
PROFESSIONAL
LAND SURVEYOR

Victor M. McLind

REGISTERED
JAN 17 1973
VICTOR M. MCLIND
934

MAP FILE: M 47 - 36

MAP FILE: M 47 - 36