

COUNTY SURVEYORS FILE DATA
DO NOT REMOVE FROM OFFICE

SURVEY FOR GARDEN VALLEY MEDICAL CENTER, INC.
LOCATED IN SECTION 11, T27S, R6W, WM
JAN., 1973

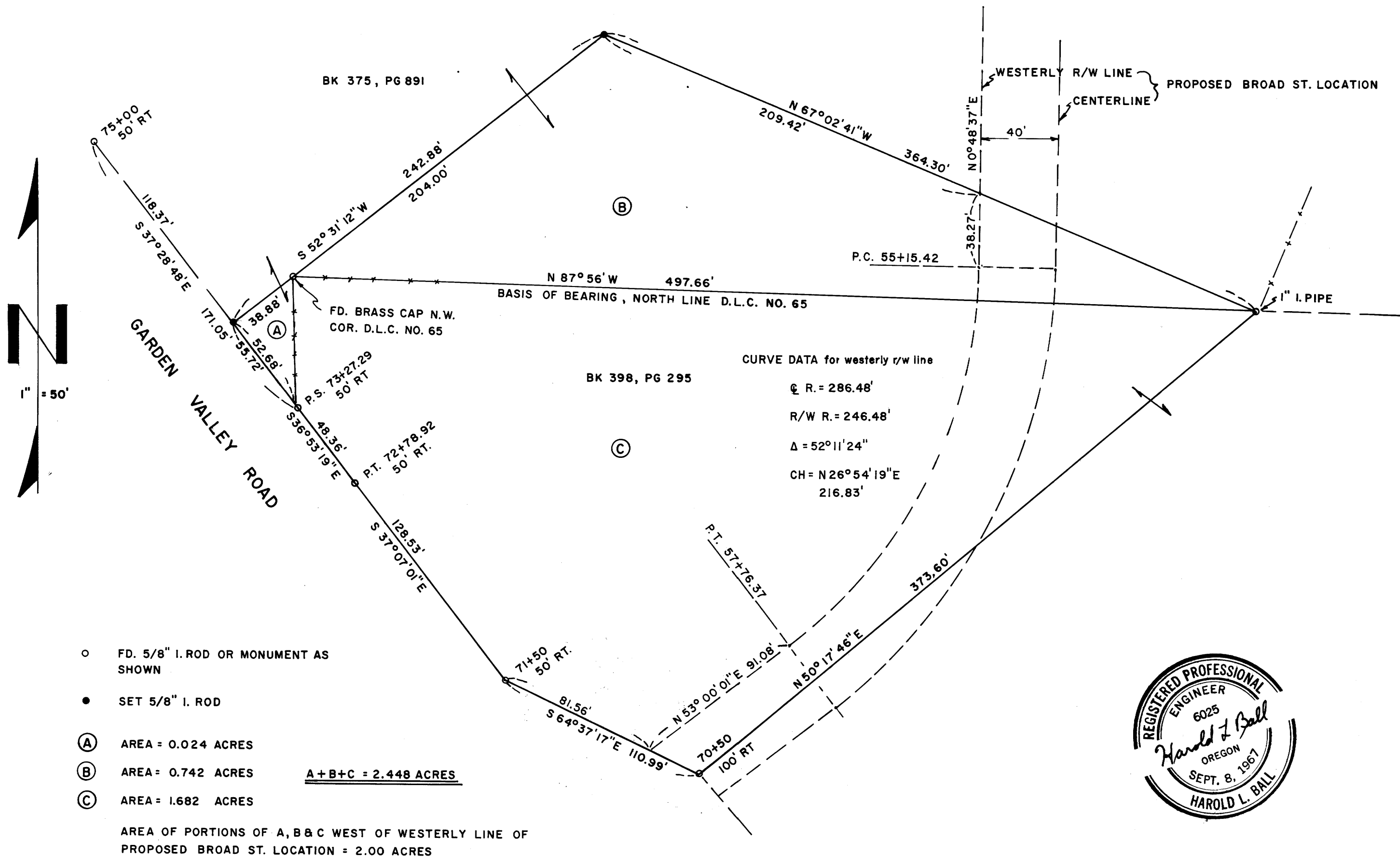
BY HAROLD L BALL - CIVIL ENGINEER - ROSEBURG, ORE.

FILED
RECEIVED

JAN 15 1973

COUNTY SURVEYOR
DOUGLAS COUNTY, ORE.

MAP FILE M-47-35



MAP FILE M-47-35