

Minor Land Partition in Sec. 17 & 20; T. 26 S., Rg. 3 W., W.M.

For Long & Brooks

By Baughman Surveying Service

Scale 1" = 100'

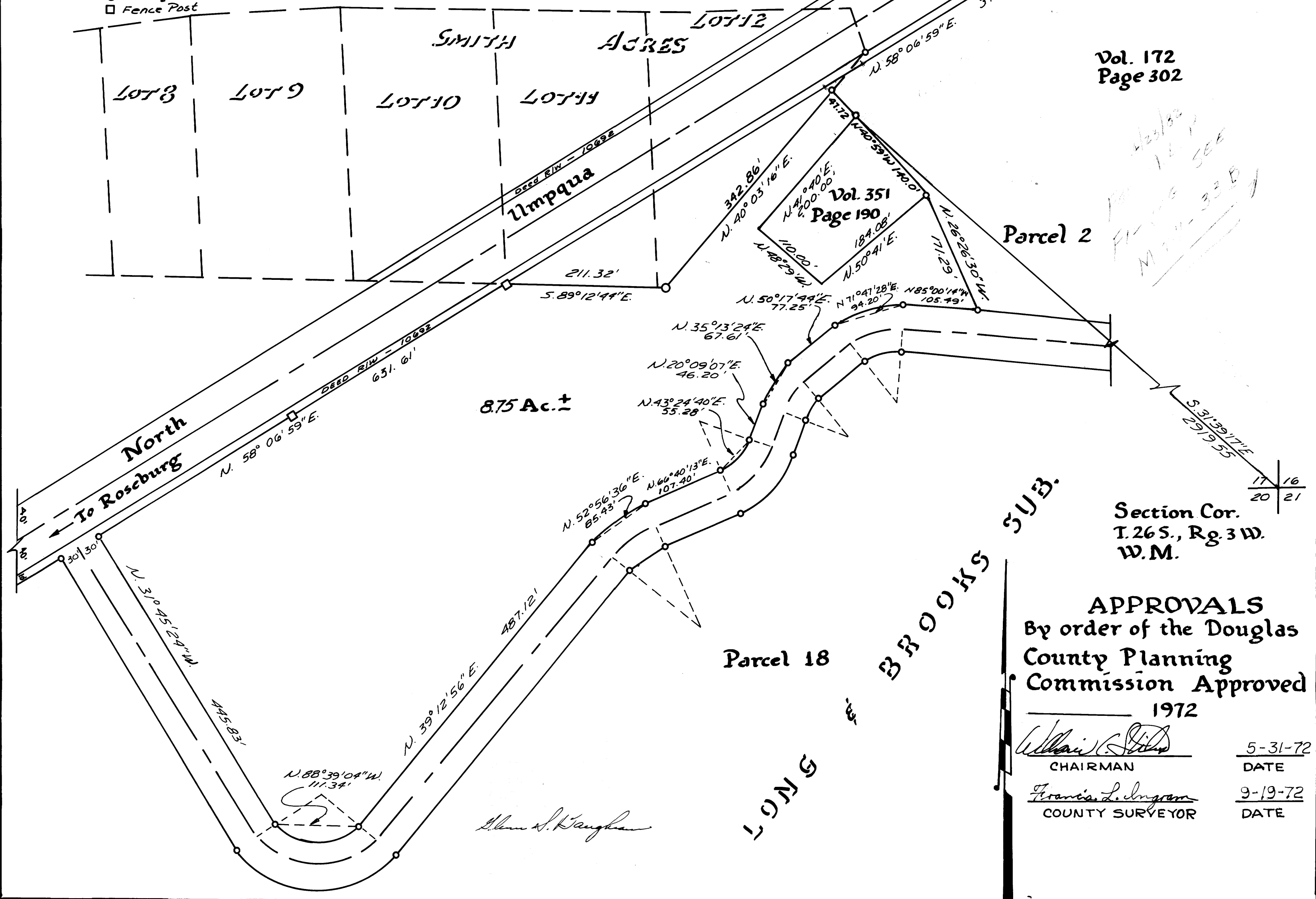
May 1972

COUNTY SURVEYORS FILE DATA
DO NOT REMOVE FROM OFFICE

Handwritten initials

Legend

- Fd 5/8" I.P.
- Fd 1 1/2" I.P.
- Fence Post



Vol. 172
Page 302

Vol. 351
Page 190

Handwritten notes:
423/80
11/11
FILE SEE
M 47-33B

Section Cor.
T. 26 S., Rg. 3 W.
W.M.

APPROVALS
By order of the Douglas
County Planning
Commission Approved
1972

<i>William C. [Signature]</i>	5-31-72
CHAIRMAN	DATE
<i>Francis L. Ingram</i>	9-19-72
COUNTY SURVEYOR	DATE

M 47 - 33A

M 47 - 33A