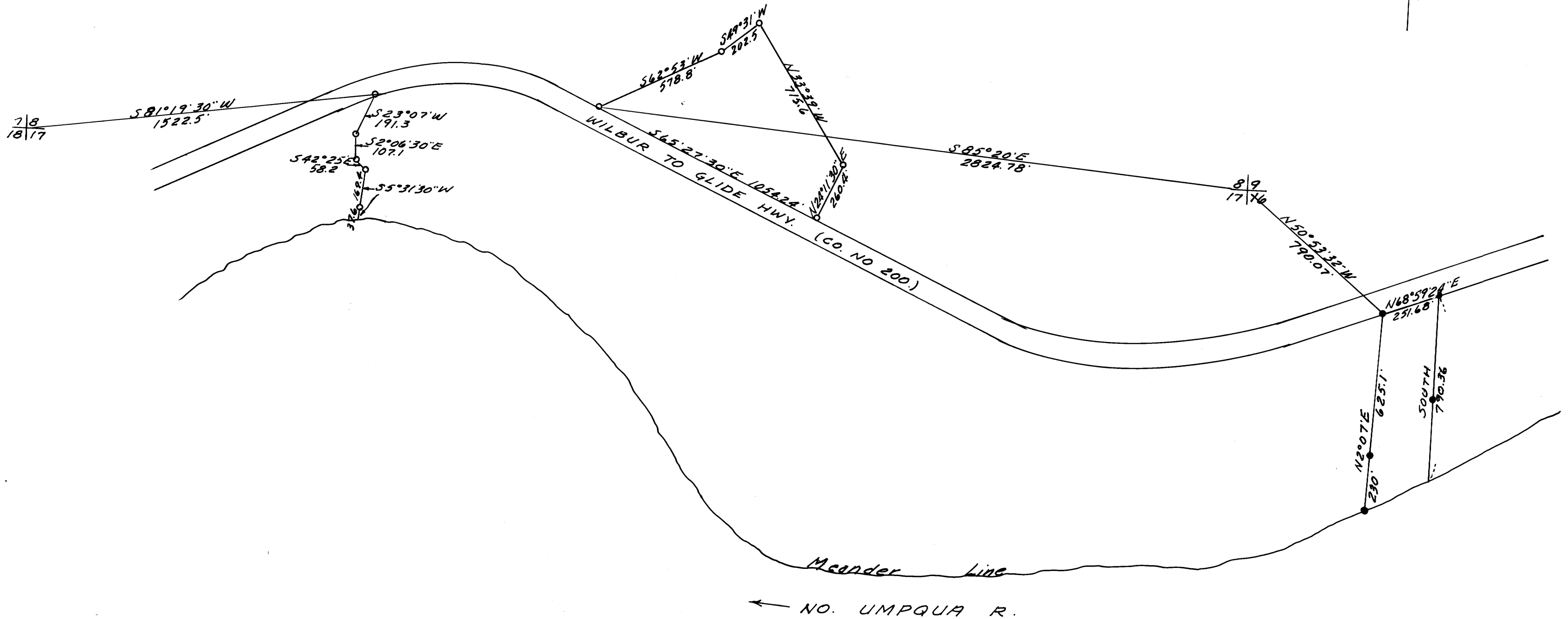


COUNTY SURVEYORS FILE DATA
DO NOT REMOVE FROM OFFICE

SURVEY IN SEC. 16, T26S, R4W.W.M.
DOUGLAS COUNTY, ORE.
SURVEYED FOR - JIM BEVANS
SURVEYED BY - W.S. BARNES
DEC. 1972
SCALE 1"=400'

FILED *LS*
RECEIVED *29*
JAN 1 1973

COUNTY SURVEYOR
DOUGLAS COUNTY, ORE.



- 3/4" Iron rods found.
- 5/8" " " "

Base bearing taken from C.S. File M38-65.
References - C.S. File M38-65 & M39-52

MAP FILE M47 - 31

MAP FILE M47 - 31