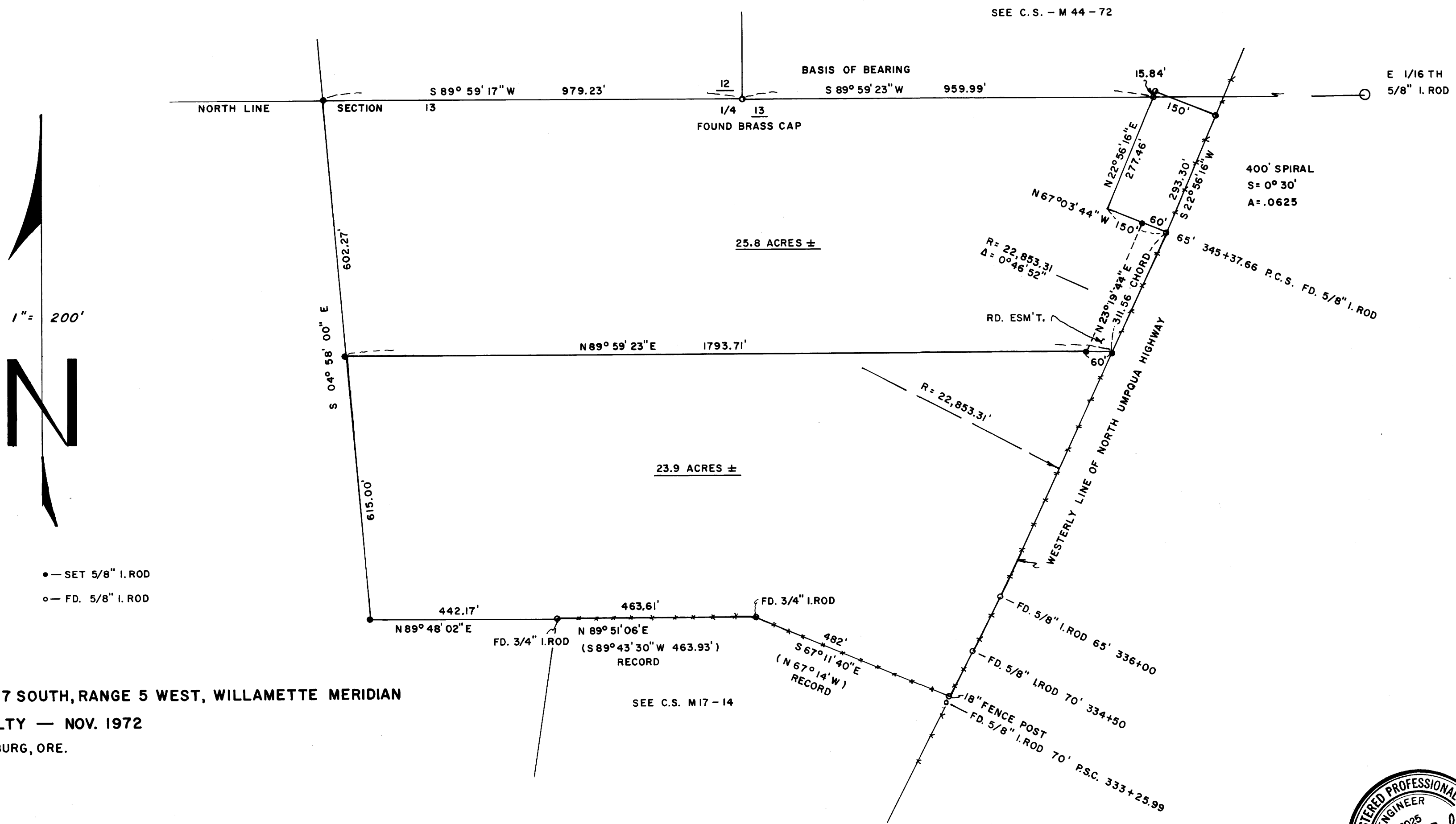


FILED  
RECEIVED  
NOV 13 1972  
COUNTY SURVEYOR  
DOUGLAS COUNTY, ORE.

MAP FILE M47-3



SURVEY IN SECTION 13, TOWNSHIP 27 SOUTH, RANGE 5 WEST, WILLAMETTE MERIDIAN  
SURVEYED FOR PETE SERAFIN REALTY — NOV. 1972  
BY HAROLD L. BALL - CIVIL ENGINEER - ROSEBURG, ORE.



MAP FILE M47-3