

**SURVEY TO SET PROPERTY CORNERS FOR DESCRIPTION
SITUATE IN SECTION 21, T.26S., R.4W.W.M.**

FOR: PHIL BRASHEAR

BY: BAUGHMAN SURVEYING SERVICE

DECEMBER 1972

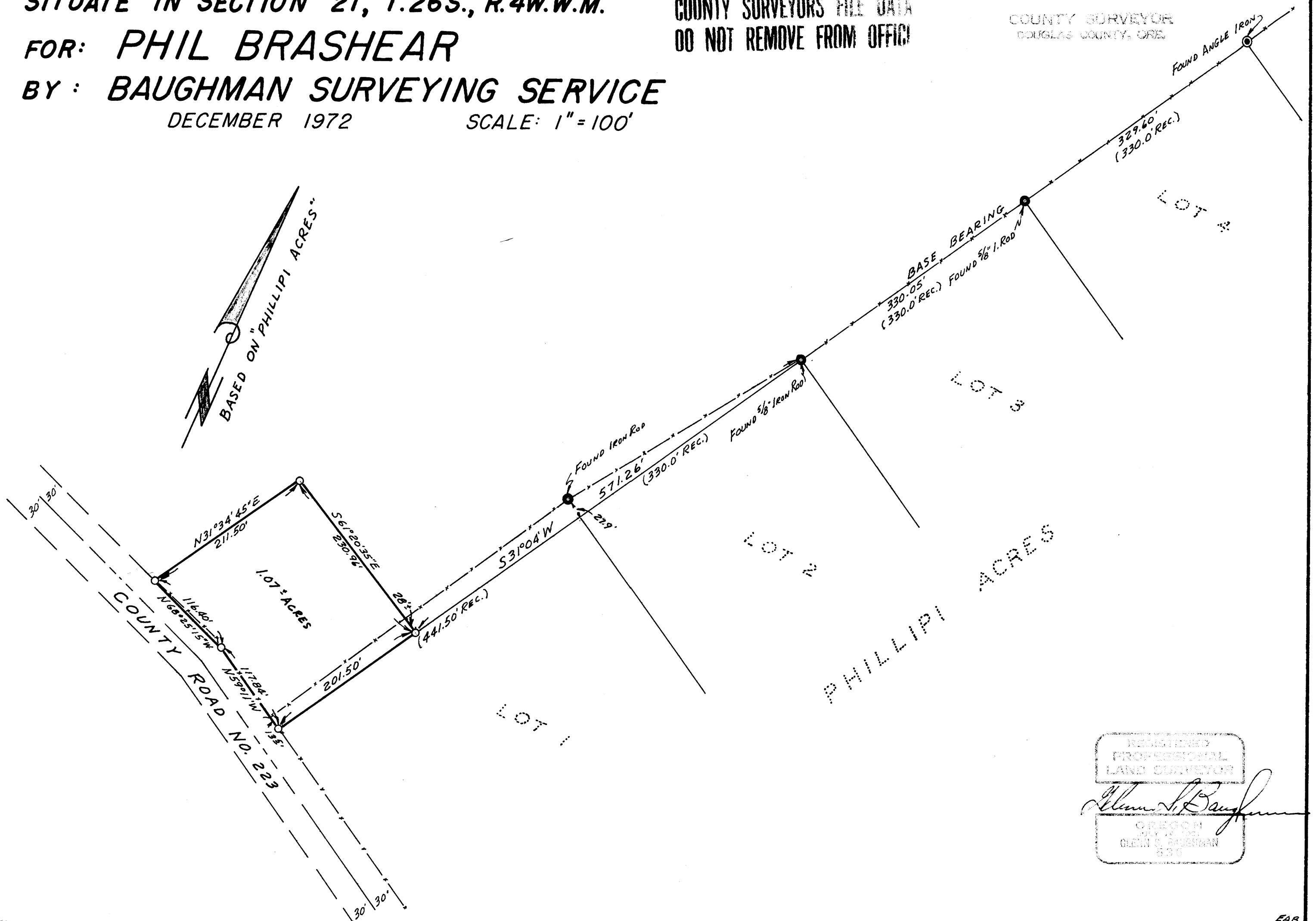
SCALE: 1" = 100'

FILED *LL*
RECEIVED

JAN 5 1973

COUNTY SURVEYOR
DOUGLAS COUNTY, ORE.

COUNTY SURVEYORS FILE DATA
DO NOT REMOVE FROM OFFICE



REGISTERED
PROFESSIONAL
LAND SURVEYOR

Glenn S. Baughman

OREGON
JULY 22, 1961
GLENN S. BAUGHMAN
630

MAP FILE M.47-22

M 47-22

EAB
12/3/72