

SURVEY TO SET PROPERTY CORNERS
SITUATE IN SECTION 21, T.26S., R.4W.W.M.
FOR: KENT BAYLESS

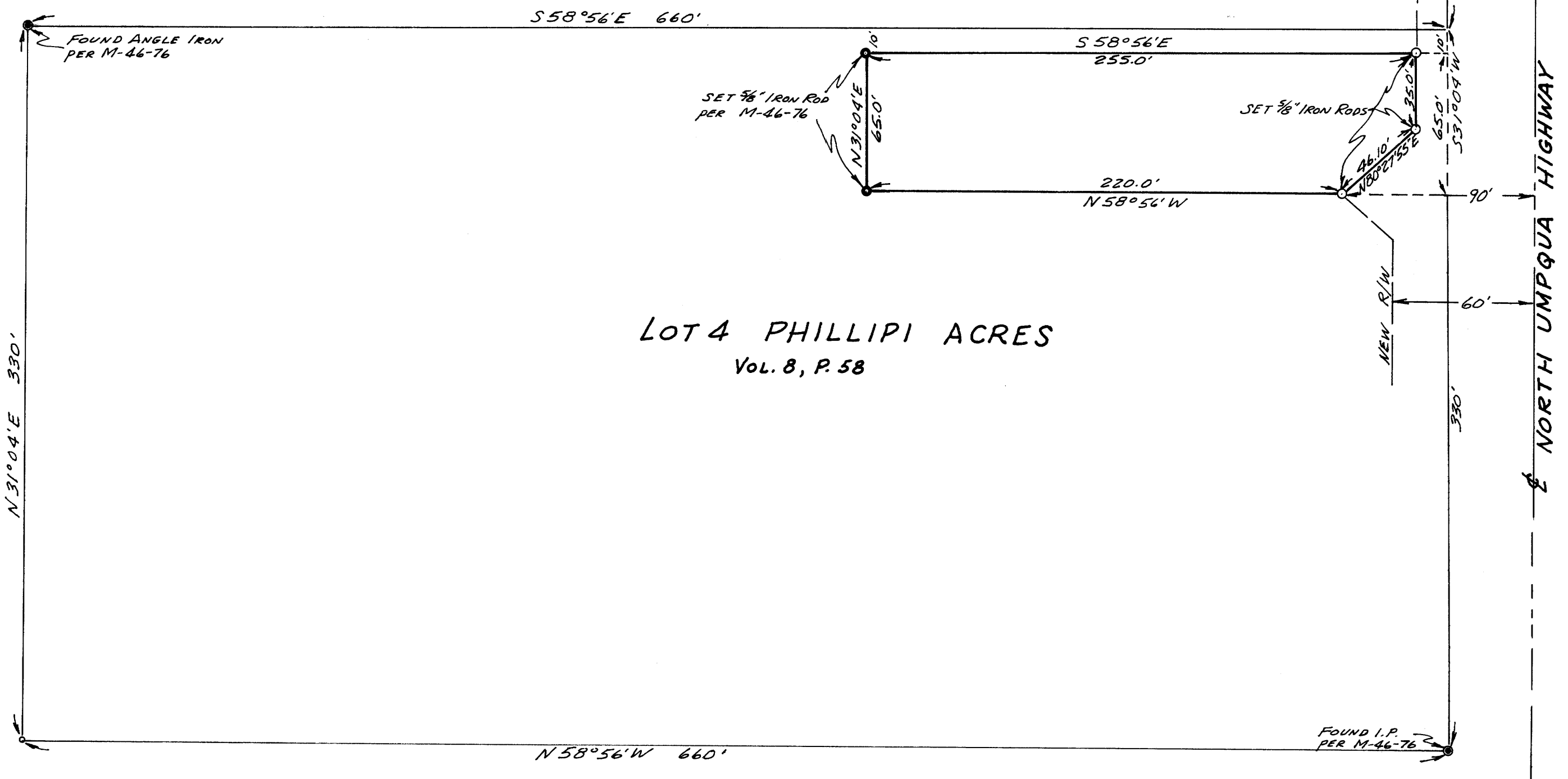
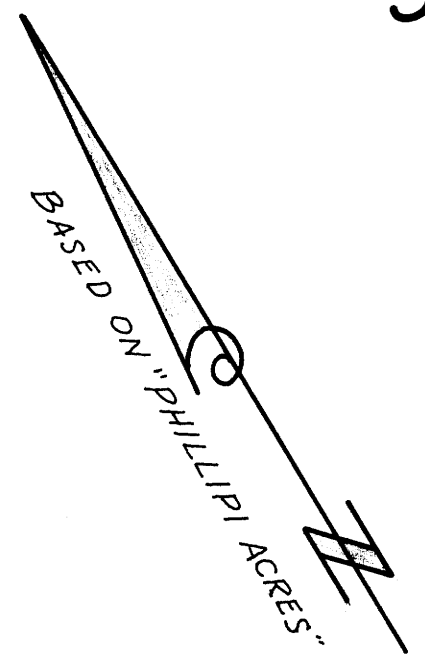
BY: BAUGHMAN SURVEYING SERVICE
 DECEMBER 1972 SCALE: 1" = 50'

FILED *LL*
 RECEIVED
 JAN 5 1973
 COUNTY SURVEYOR
 DOUGLAS COUNTY, ORE.

COUNTY SURVEYORS FILE DATA
 DO NOT REMOVE FROM OFFICE

REGISTERED
 PROFESSIONAL
 LAND SURVEYOR

Eugene A. Bloom
 EUGENE A. BLOOM
 1972



LOT 4 PHILLIPI ACRES
 Vol. 8, P. 58

NORTH UMPQUA HIGHWAY

M 47-21

MAP FILE M.47-21