

**SURVEY TO SET PROPERTY CORNERS
IN LOTS 5 & 6, BLOCK TWO, SUNNY ACRES
SECTION 24, T.27S., R.6W., W.M.**

**FOR: PEARL CARTER
BY: BAUGHMAN SURVEYING SERVICE**

DECEMBER 1972 SCALE: 1" = 40'

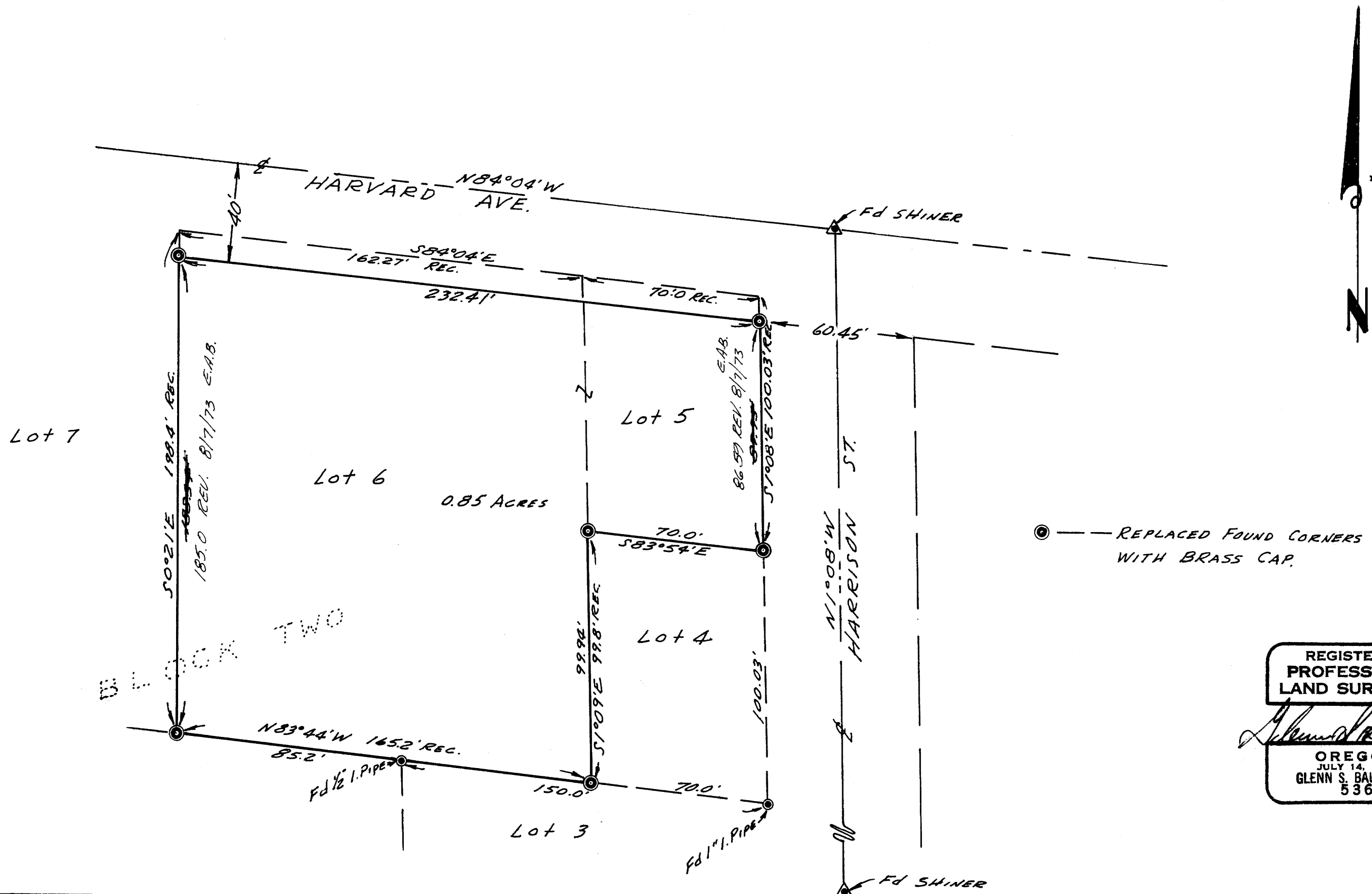
COUNTY SURVEYORS FILE DATA
DO NOT REMOVE FROM OFFICE

FILED
RECEIVED

JAN 6 1973

COUNTY SURVEYOR
DOUGLAS COUNTY, OREG.

MAP FILE M.47-20



BASED ON "SUNNY ACRES"

REGISTERED
PROFESSIONAL
LAND SURVEYOR

Glenn S. Baughman
OREGON
JULY 14, 1961
GLENN S. BAUGHMAN
536

M 47-20