

SURVEY TO SET PROPERTY CORNERS

FOR: M. H. HATCHER

BY: BAUGHMAN SURVEYING SERVICE

SITUATE IN SEC. 14, T.27S. R.5W.W.M. (PORTION DEER CREEK ORCHARD TRACTS, PLAT "A")

FOUND 1" STEEL
BAR - NE COR.
LOT 8, DEER
CREEK ORCHARD
TRACTS, PLAT "A"

FILED
RECEIVED

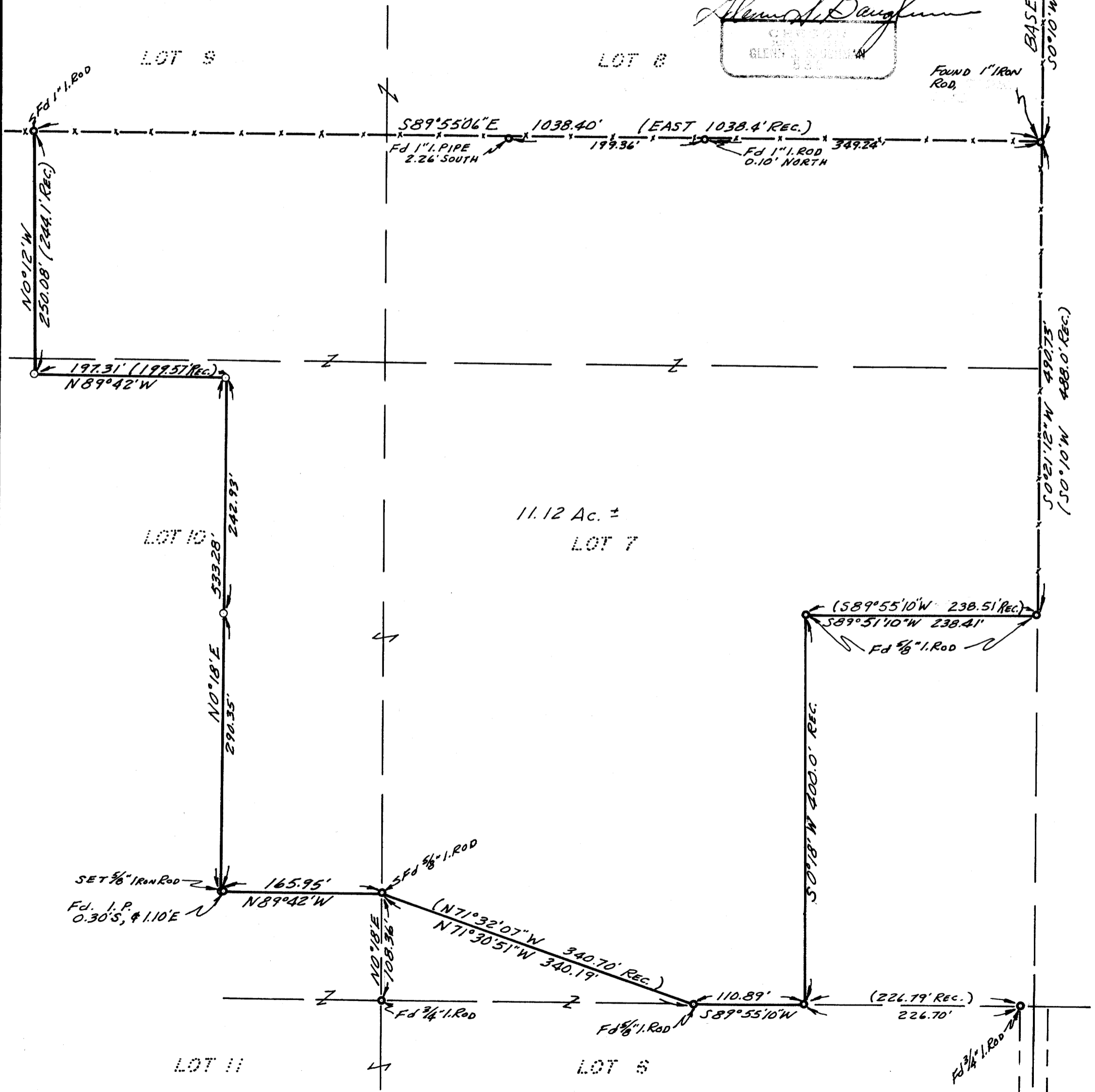
DECEMBER 1972

SCALE: 1"=100'

JAN 5 1973

COUNTY SURVEYOR
DOUGLAS COUNTY, ORE

REGISTERED
PROFESSIONAL
LAND SURVEYOR
Almond S. Baughman
GLENN S. BAUGHMAN
1972



● --- I.P. FOUND
○ --- 5/8" I. ROD SET.

COUNTY SURVEYORS FILE DATA
NOT REMOVE FROM OFFICE

E.A.B.