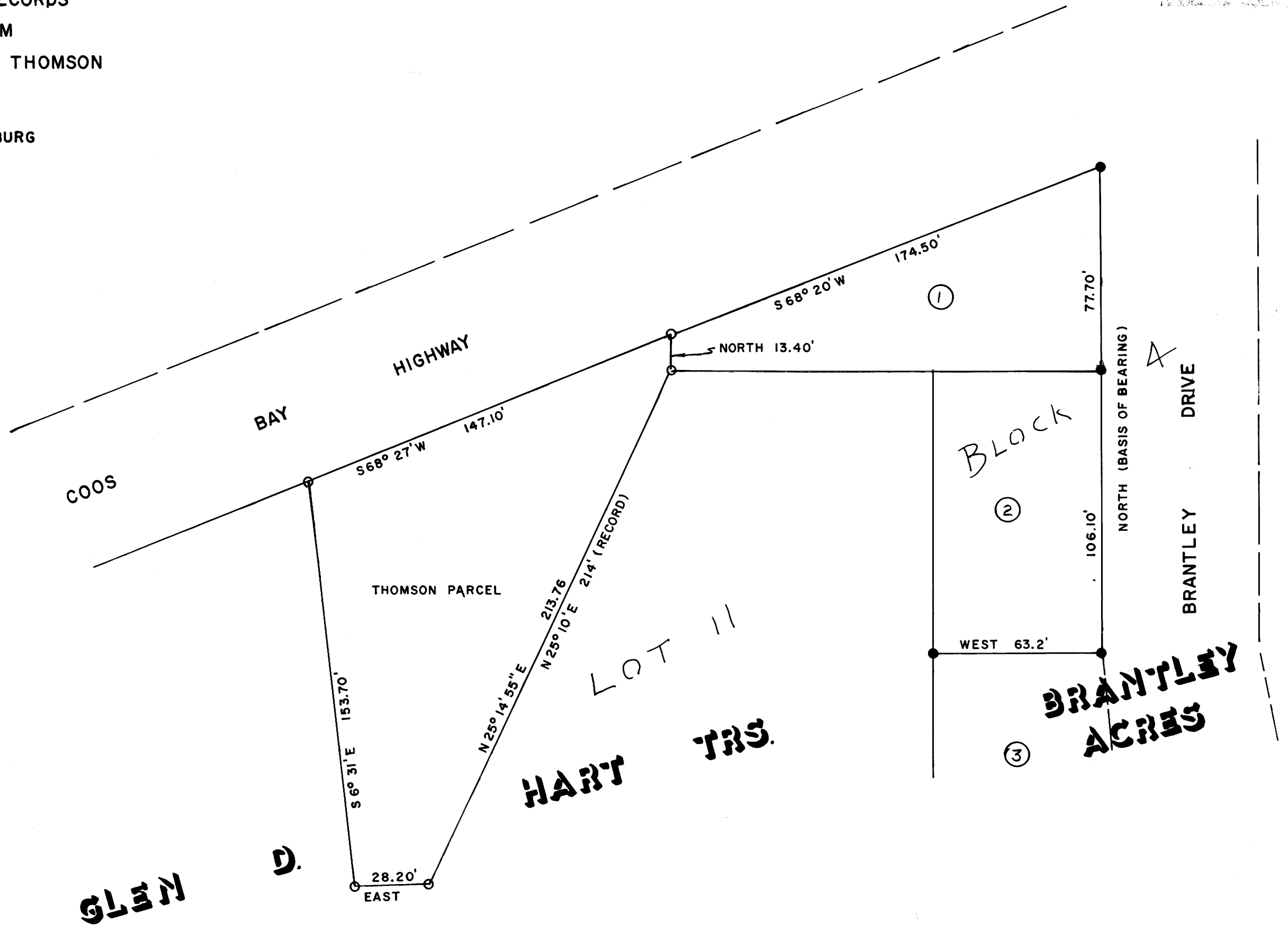


**COUNTY SURVEYORS FILE DATA
DO NOT REMOVE FROM OFFICE**

FILED
RECEIVED *LL*
JAN 2 1973

COUNTY SURVEYOR
DOUGLAS COUNTY, ORE.

SURVEY AS PER DEED DESCRIPTION
VOL 337 at PG 26 DOUGLAS COUNTY RECORDS
LOCATED IN SECTION 21, T28S, R6W, WM
FOR THE CITY OF WINSTON & CLIFFORD THOMSON
DEC, 1972
BY HAROLD L. BALL - CIVIL ENGINEER - ROSEBURG



- SET 5/8" I. ROD
- FD. 1" I. PIPE



MAP FILE - 22-4-27 - 166