

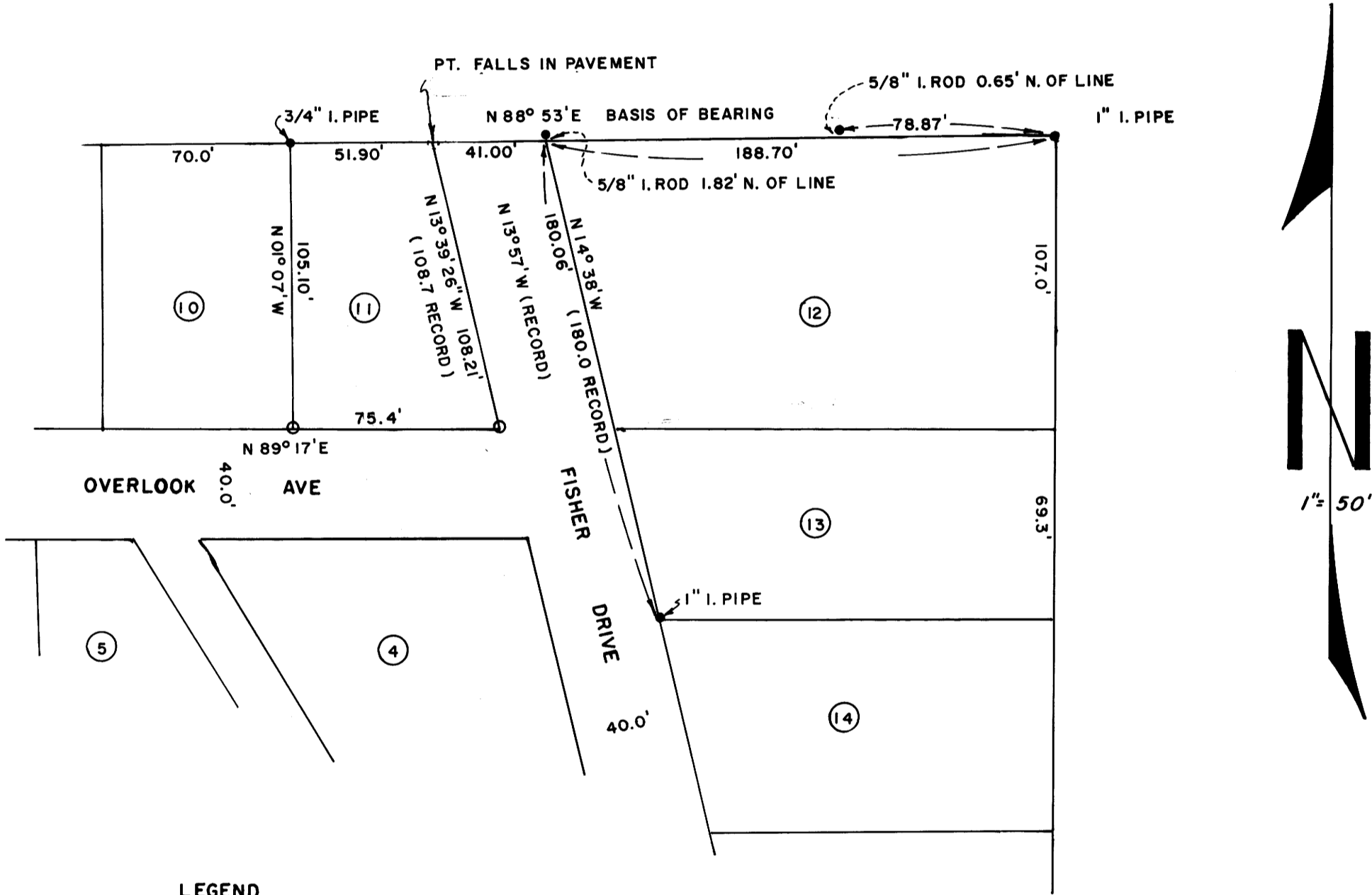
COUNTY SURVEYORS FILE DATA
DO NOT REMOVE FROM OFFICE

FILED
RECEIVED

DEC 27 1972

COUNTY SURVEYOR
DOUGLAS COUNTY, ORE.

SURVEY OF LOT II OF GLEN OAKS ADDITION TO THE CITY OF ROSEBURG
SECTION 19, T 27 S, R 5 W, WM
FOR JOHN PUTTMAN — DEC., 1972
BY HAROLD L. BALL - CIVIL ENGINEER - ROSEBURG, ORE.



LEGEND

- MONUMENT FOUND AS SHOWN
- SET 5/8" I. ROD

