

SURVEY IN LOTS 21, 22, & 23, BLOCK 3, PLAT M, S.L. & W. CO. IN SEC. 24, T25S, R6W, W.M., DOUGLAS CO., ORE.

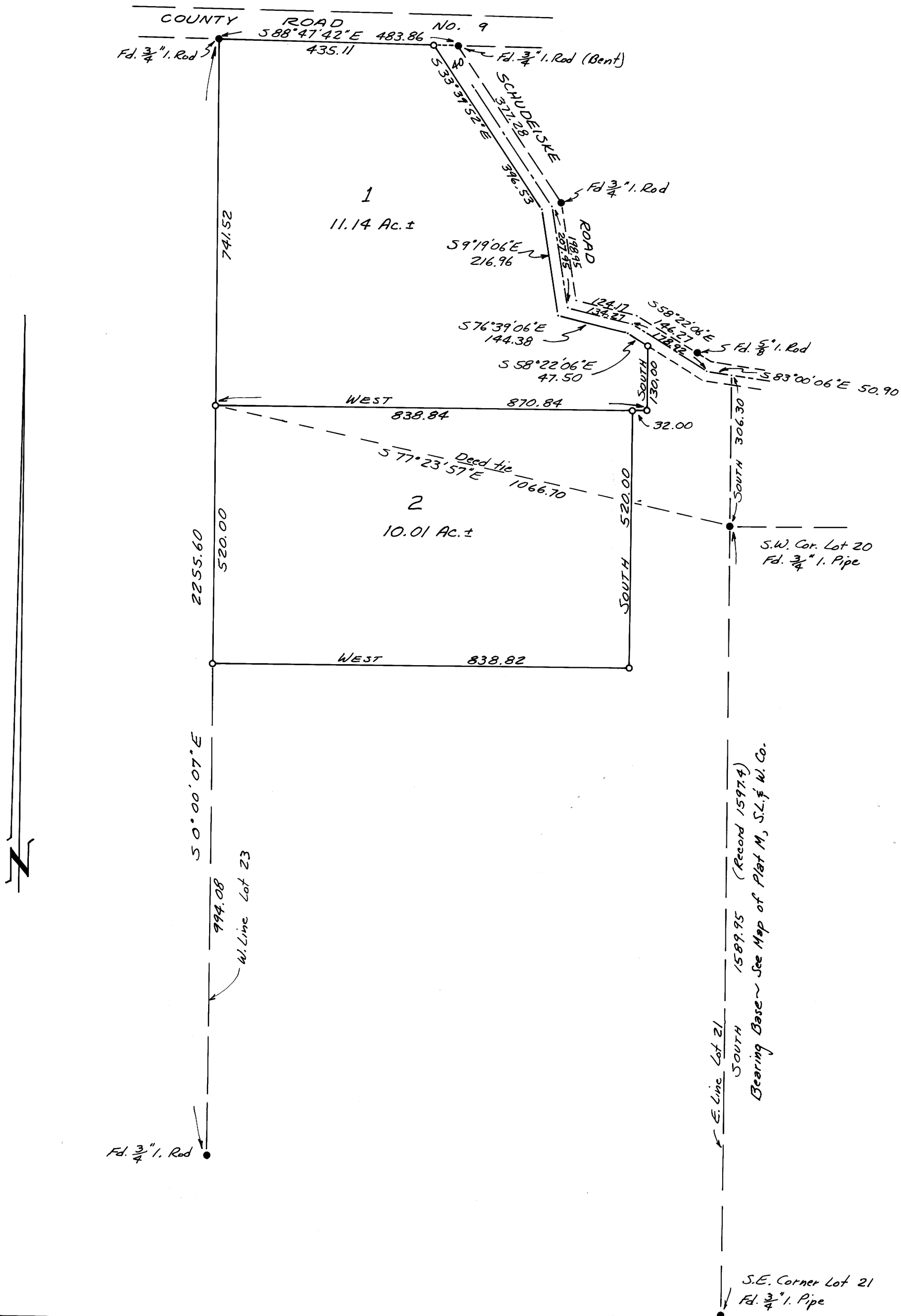
Surveyed for Leo Welter by Victor M. McLind
October 1972

Scale: 1" = 200'

o ~ Indicates Set $\frac{3}{4}$ " Iron Rod

**COUNTY SURVEYORS FILE DATA
DO NOT REMOVE FROM OFFICE**

Victor M. McLind
REGISTERED
PROFESSIONAL
LAND SURVEYOR
DOUGLAS COUNTY, ORE.



REGISTERED
PROFESSIONAL
LAND SURVEYOR
Victor M. McLind
CLERK
VICTOR M. MCLIND
954