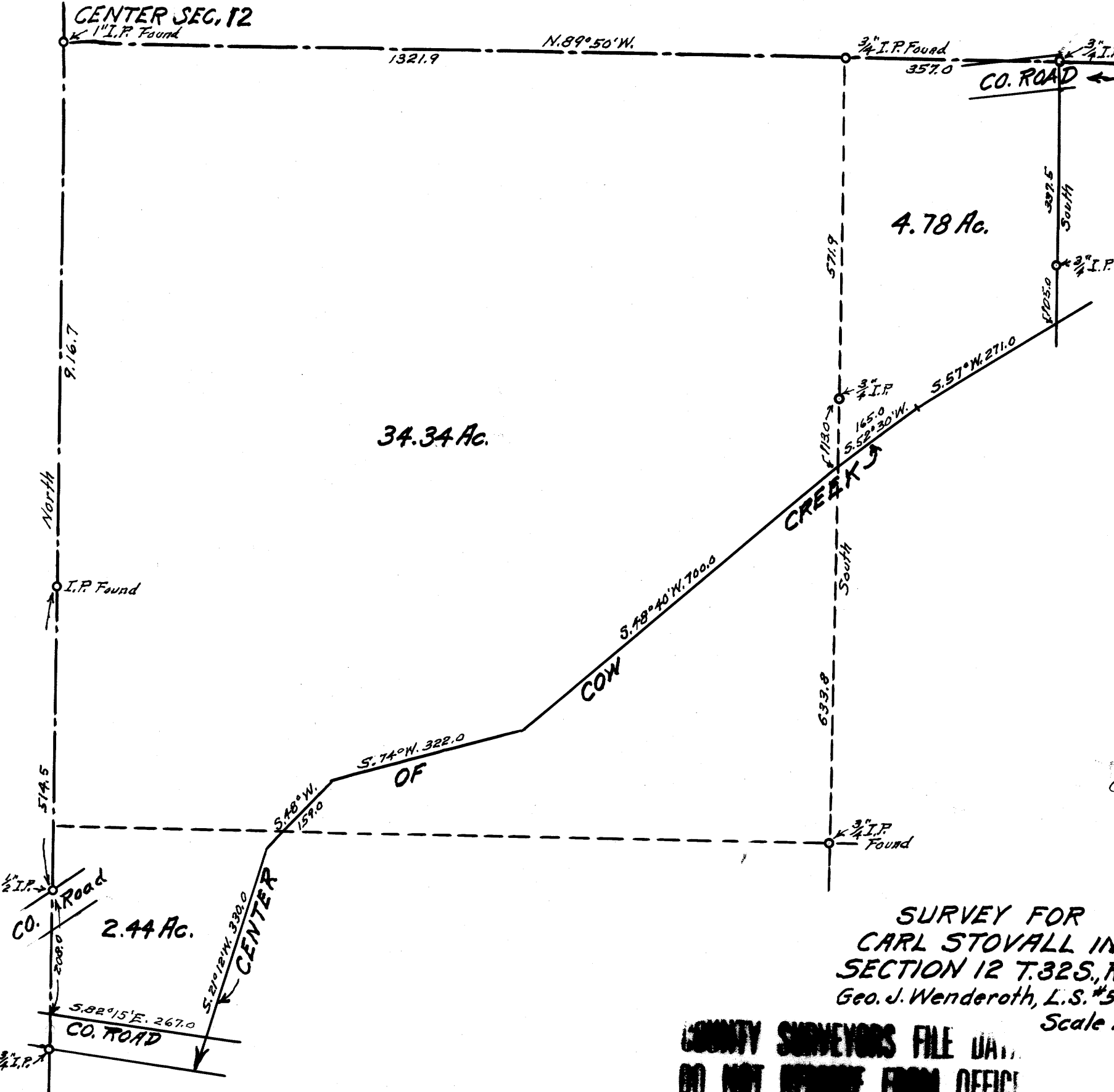
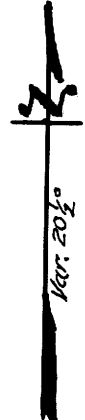


CENTER SEC. 12



Note - County Rd. occupies 2.8 Ac.



FILED RECEIVED

OCT 2 1972

COUNTY SURVEYOR DOUGLAS COUNTY, ORE.

REGISTERED PROFESSIONAL LAND SURVEYOR

Geo. J. Wenderoth

OREGON MARCH 10, 1944 GEORGE J. WENEDROTH No. 5

SURVEY FOR CARL STOVALL IN SECTION 12 T.32S., R.5W., W.M. Geo. J. Wenderoth, L.S. #5 Oct. 1972 Scale 1" = 200ft.

COUNTY SURVEYORS FILE DATA DO NOT REMOVE FROM OFFICE