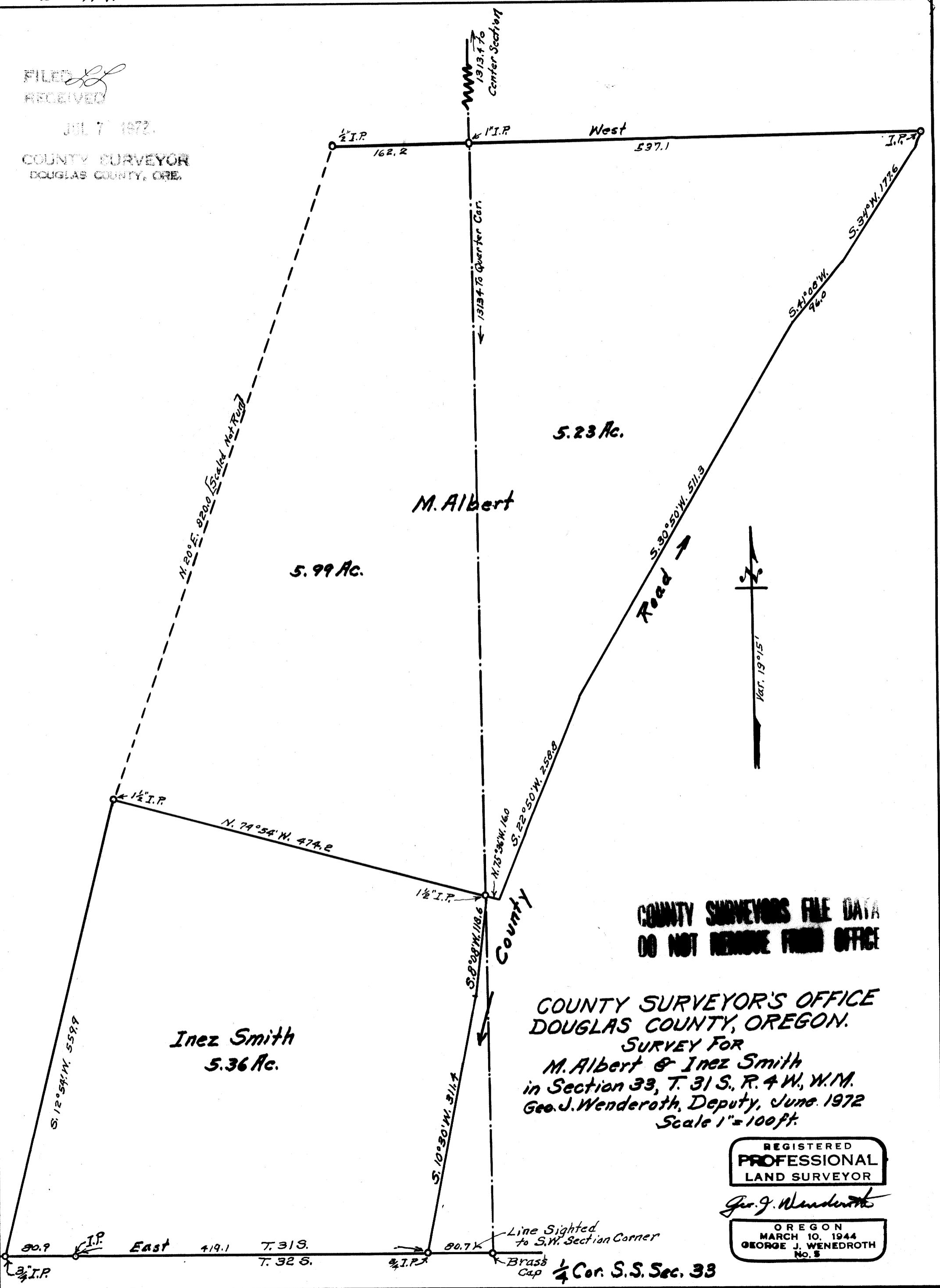


FILED
RECEIVED

JUL 7 1972

COUNTY SURVEYOR
DOUGLAS COUNTY, ORE.



COUNTY SURVEYORS FILE DATA
DO NOT REMOVE FROM OFFICE

COUNTY SURVEYOR'S OFFICE
DOUGLAS COUNTY, OREGON.
SURVEY FOR
M. Albert & Inez Smith
in Section 33, T. 31 S., R. 4 W., W.M.
Geo. J. Wenderoth, Deputy, June 1972
Scale 1" = 100 ft.

REGISTERED
PROFESSIONAL
LAND SURVEYOR

Geo. J. Wenderoth

OREGON
MARCH 10, 1944
GEORGE J. WENEDROTH
No. 5

1/4 Cor. S.S. Sec. 33