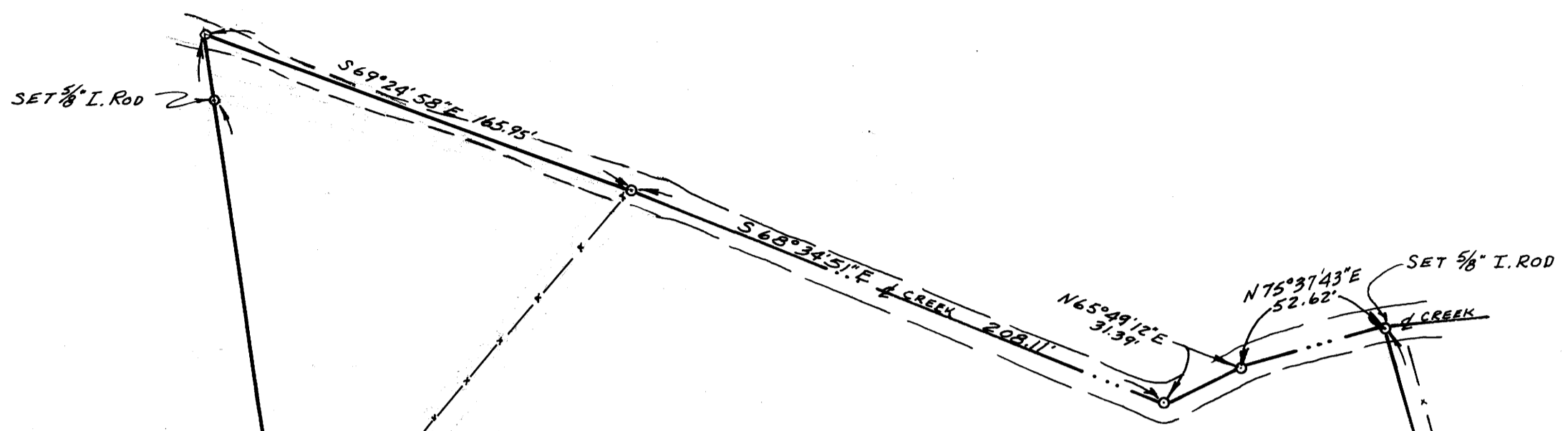


FILED
RECEIVED

OCT 1 1972

COUNTY SURVEYOR
DOUGLAS COUNTY, ORE

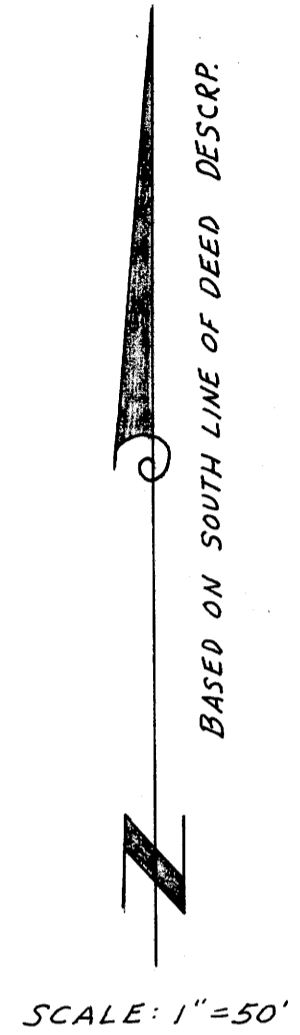


4.31 AC'S

GOW PER VOL. 343, P. 162

SHARP PER VOL. 343, P. 162

KEEL PER VOL. 343, P. 162



COUNTY SURVEYORS FILE DATA
DO NOT REMOVE FROM OFFICE

SURVEY TO SET PROPERTY CORNERS
FOR: HARRIS WHITTAKER
SITUATE IN SEC. 19, T.26S., R.3W.W.M.
BY: BAUGHMAN SURVEYING SERVICE
SEPTEMBER 1972

REGISTERED
PROFESSIONAL
LAND SURVEYOR

Glenn S. Baughman

OREGON
JULY 12, 1951
GLENN S. BAUGHMAN
535

FOUND BRASS CAP
N.W. COR., D.L.C. #43, SEC. 19
T.26S., R.3W.W.M.

EAB

MAP FILE M. 46 - 69

MAP FILE M. 46 - 69