

COUNTY SURVEYORS FILE DATA
DO NOT REMOVE FROM OFFICE

SURVEY IN SEC. 19, T28S, R5W, W.M. &
DOUGLAS COUNTY, ORE. SEC. 24, T.28-6W.

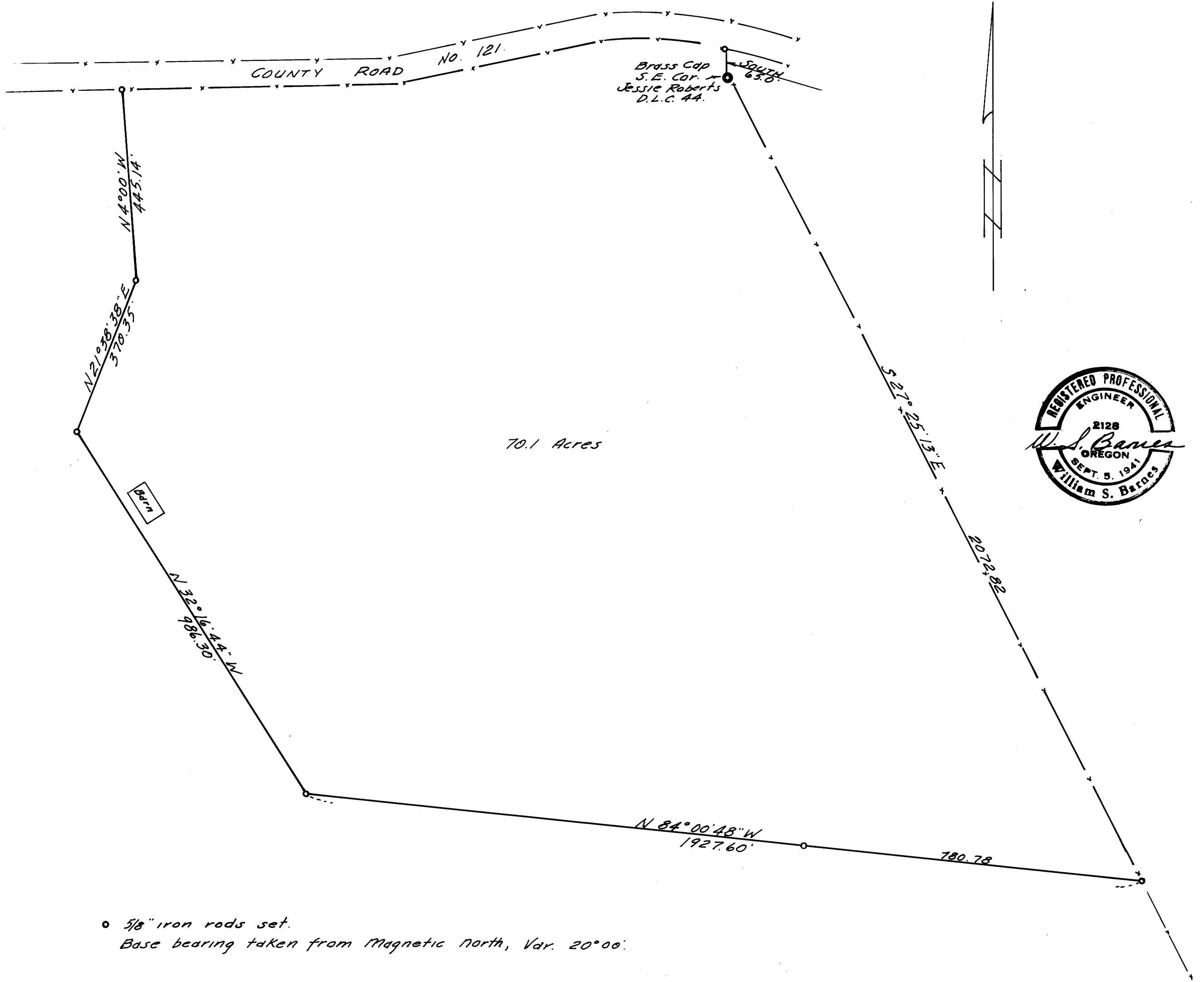
SURVEYED FOR - ADOLF G. OLSEN
SURVEYED BY - W. S. BARNES

JUNE 1972
SCALE - 1" = 200'

FILED *LL*
RECEIVED

OCT 16 1972

COUNTY SURVEYOR
DOUGLAS COUNTY, ORE.



o 5/8" iron rods set.
Base bearing taken from Magnetic north, Var. 20°00'.