

SURVEY TO LOCATE PROPERTY LINES IN SECTION 21, T.28S, R.6 W.,  
W.M., WINSTON, DOUGLAS COUNTY, OREGON  
FOR REX STEVENS

BY HERBERT L. NORTHCRAFT

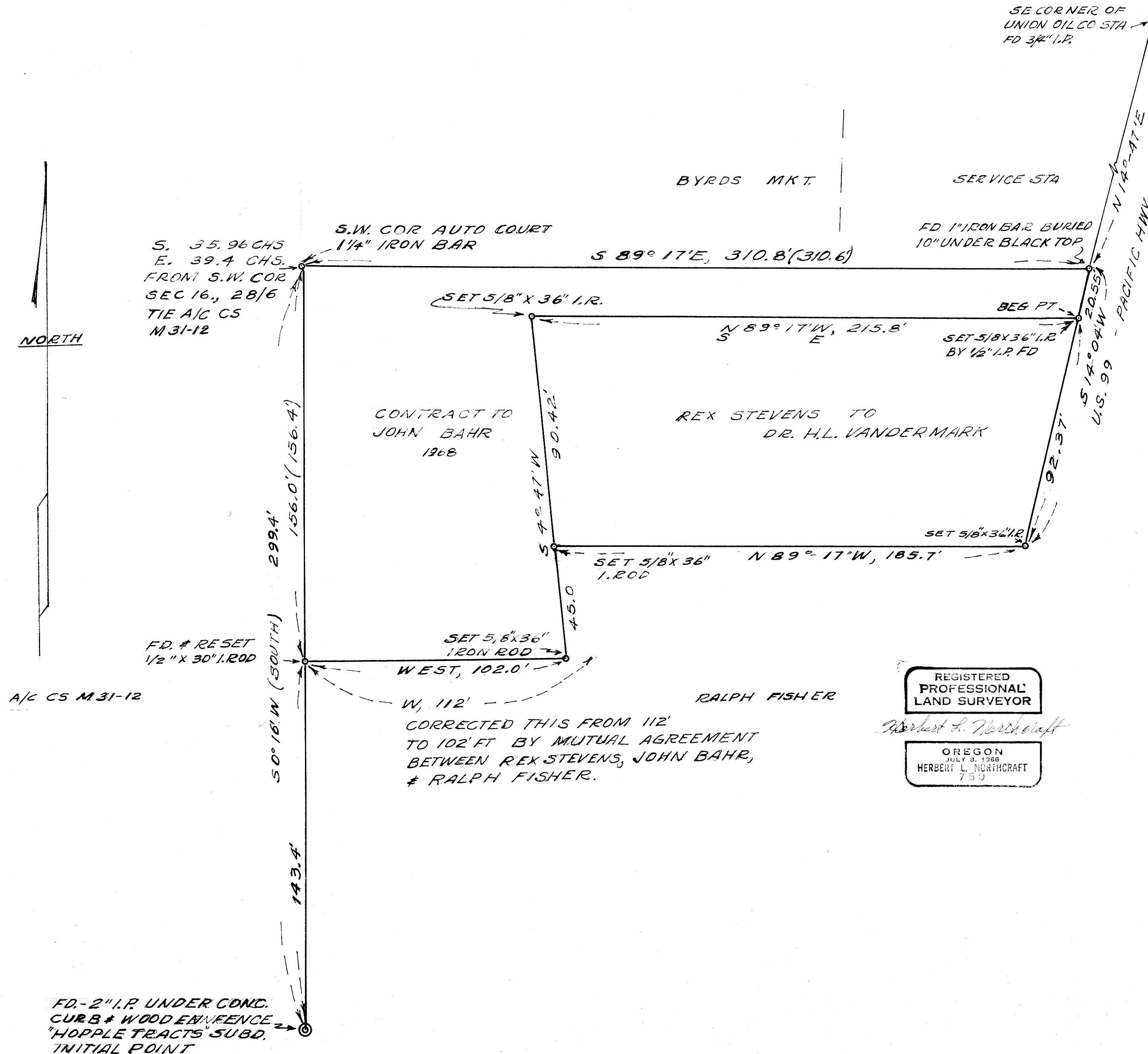
SCALE 1" = 30'

JUNE, 1972

FILED  
RECEIVED

JUL 5 1972

COUNTY SURVEYOR  
DOUGLAS COUNTY, ORE.



MAP FILE...M46-6

MAP FILE...M46-6