

COUNTY SURVEYORS FILE DATA
DO NOT REMOVE FROM OFFICE

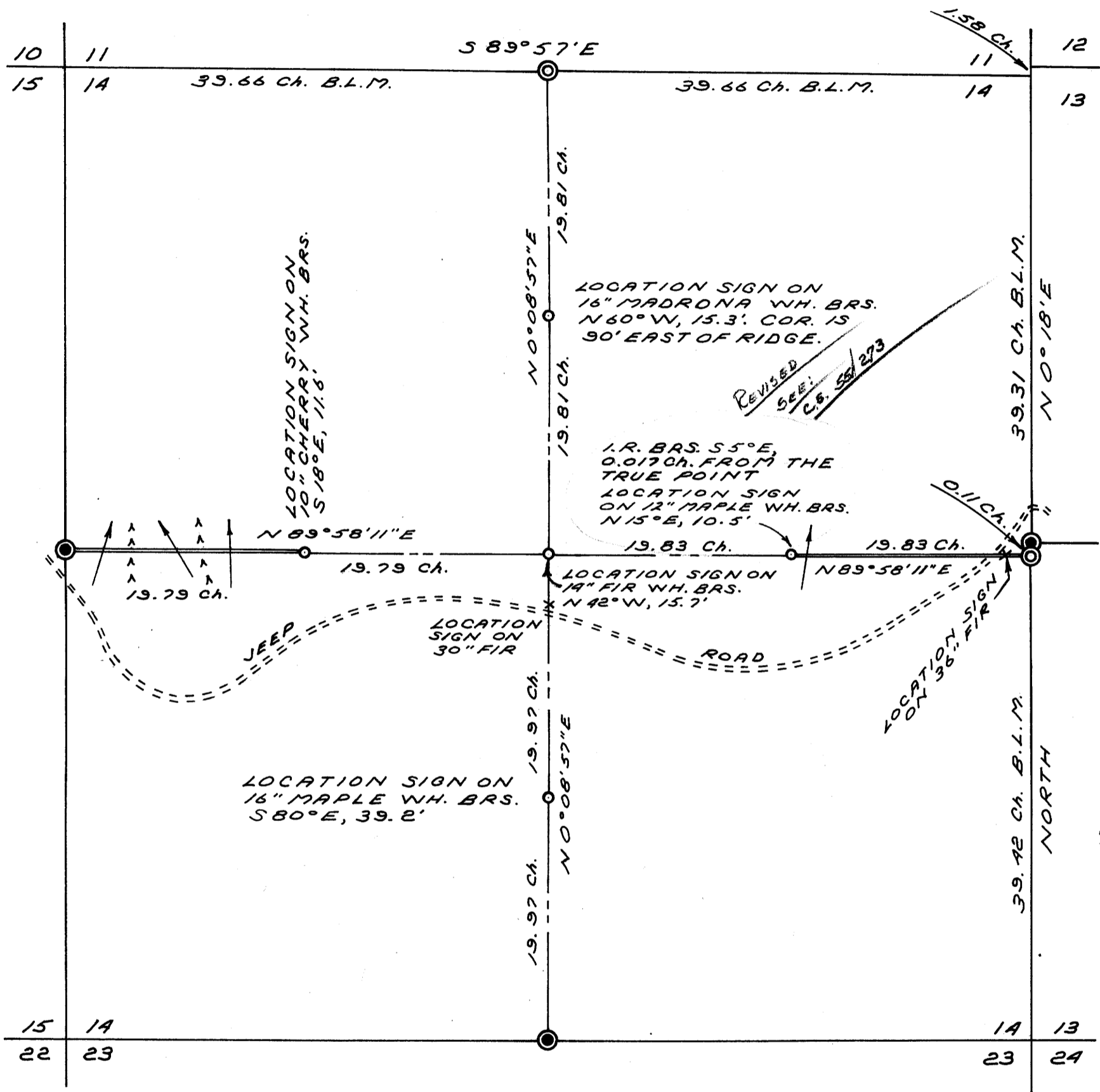
FILED
RECEIVED

SEP 29 1972

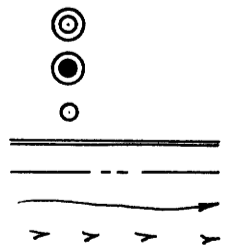
SURVEY FOR
U.S. DEPARTMENT OF THE INTERIOR
BUREAU OF LAND MANAGEMENT

COUNTY SURVEYOR
DOUGLAS COUNTY, ORE.

SECTION 14, T23S, R8W.
DOUGLAS COUNTY



I.P. BR. CAP FND. B.L.M.
 I.P. BR. CAP FND. DOUGLAS
 COUNTY SURVEYOR
 SET 5/8" I.R.'S
 TRUE LINES MARKED
 RANDOM LINES
 CREEKS
 RIDGE TOPS



REGISTERED
PROFESSIONAL
LAND SURVEYOR

Richard J. Hintz

OREGON
MAY 12, 1960
RICHARD J. HINTZ
497

SEPT. 18, 1972
SCALE: 1" = 660'

10-27-72

ATTACHED IS A REVISED PLAT OF SEC 14,
T 23S, R 8W, W.M. WORK DONE BY R.J. HINTZ
ON CONTRACT FOR US BLM COOS BAY DISTRICT,
HINTZ SET A WITNESS CORNER FOR CE 1/16 SEC COR.
WITNESS CORNER WAS REMOVED BY COOS BAY BLM
PERSONNEL, AND MARKED ON CORNER POINT. THIS
WAS DONE TO PREVENT FUTURE CONFUSION WITHIN OUR
OWN ORGANIZATION

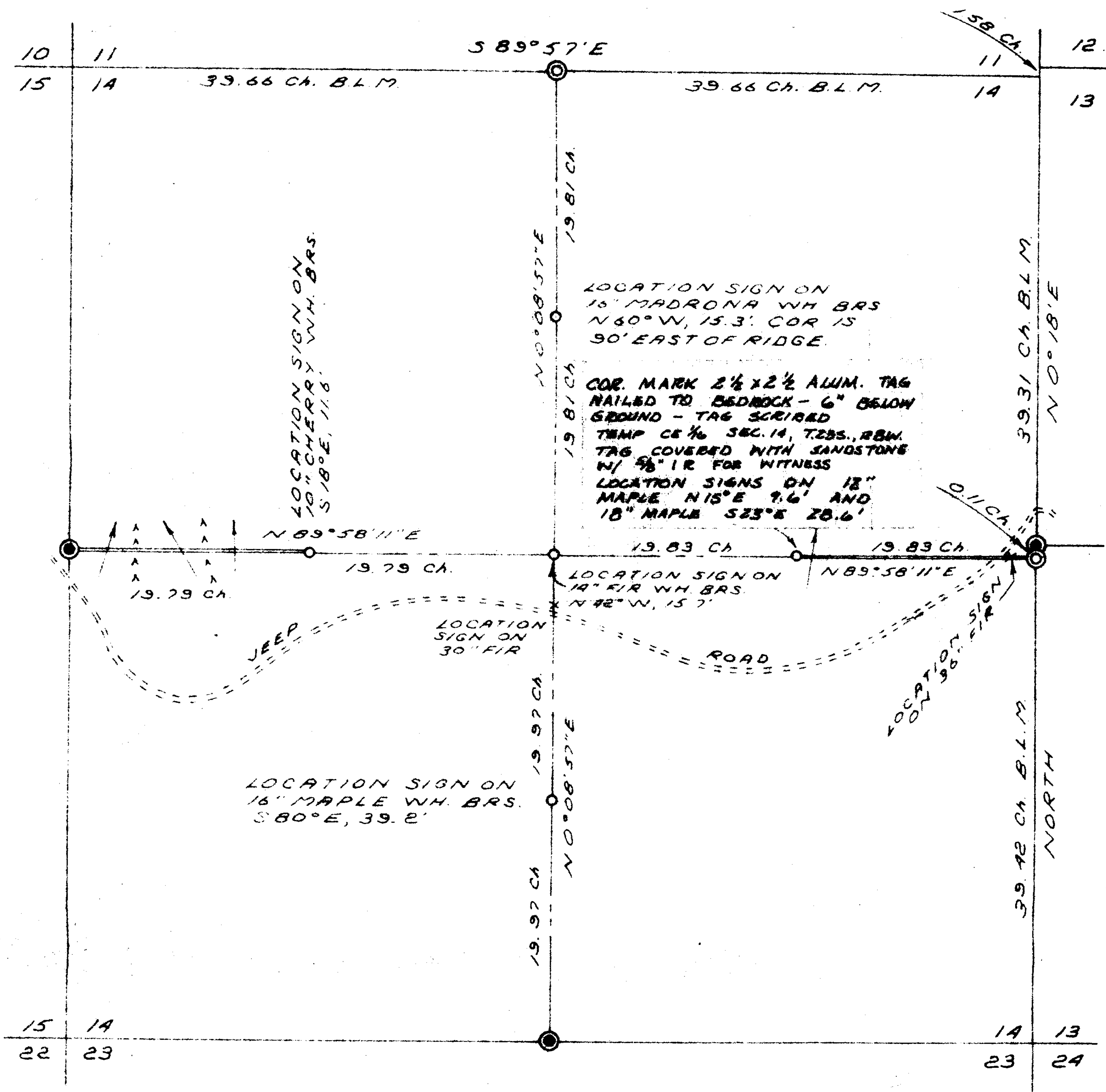
R.L. Cooke
COOS BAY DISTRICT
US BLM

FILED
RECEIVED
OCT 27 1972
COUNTY SURVEYOR
DOUGLAS COUNTY, ORE

G.S. File No. 55/273A
SEE M 46-59

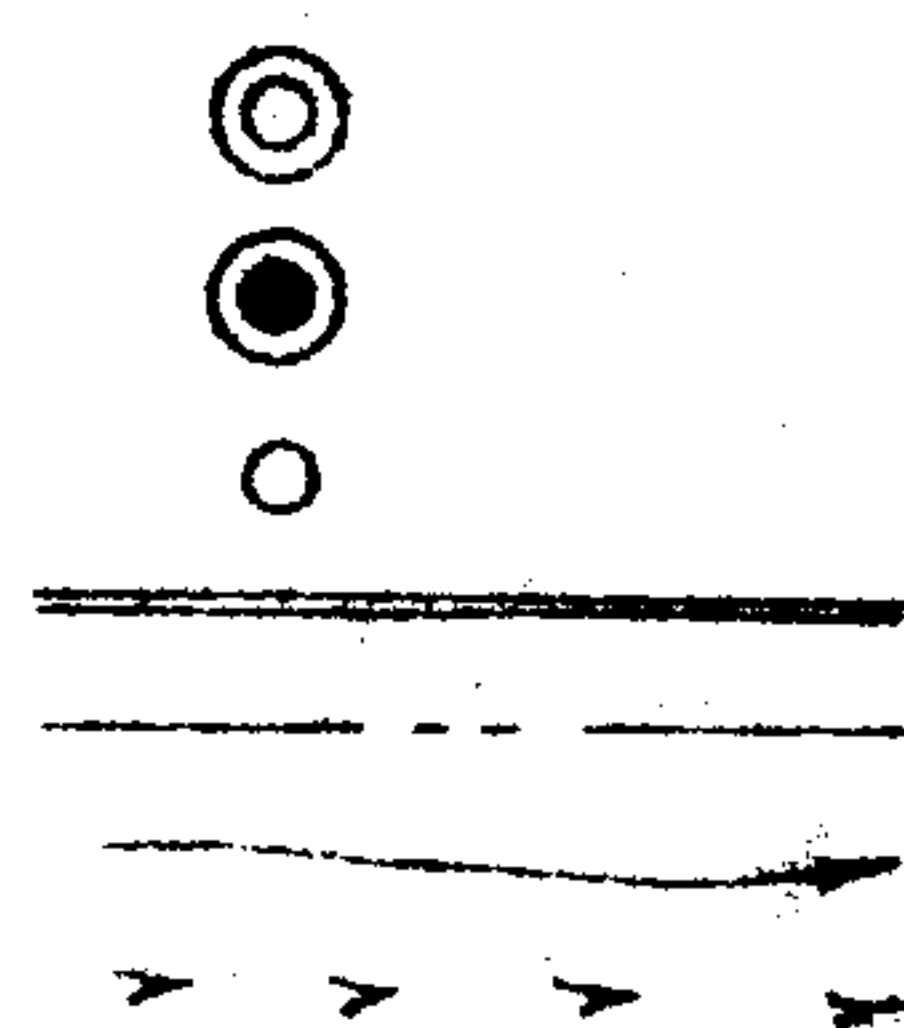
SURVEY FOR
U.S. DEPARTMENT OF THE INTERIOR
BUREAU OF LAND MANAGEMENT

SECTION 14, T23S, R8W.
DOUGLAS COUNTY



1 P BR CAP FND. B.L.M.
1 P BR CAP FND. DOUGLAS
COUNTY SURVEYOR
SET 3/8" I.R.'S
TRUE LINES MARKED
RANDOM LINES
CREEKS
RIDGE TOPS

SEPT. 18, 1972
SCALE: 1" = 660'



REGISTERED
PROFESSIONAL
LAND SURVEYOR

Richard J. Hintz

OREGON
MAY 13, 1960
RICHARD J. HINTZ
497

SEE M 46-59

C. S. File No. 55/273b