

COUNTY SURVEYORS FILE DATA
DO NOT REMOVE FROM OFFICE

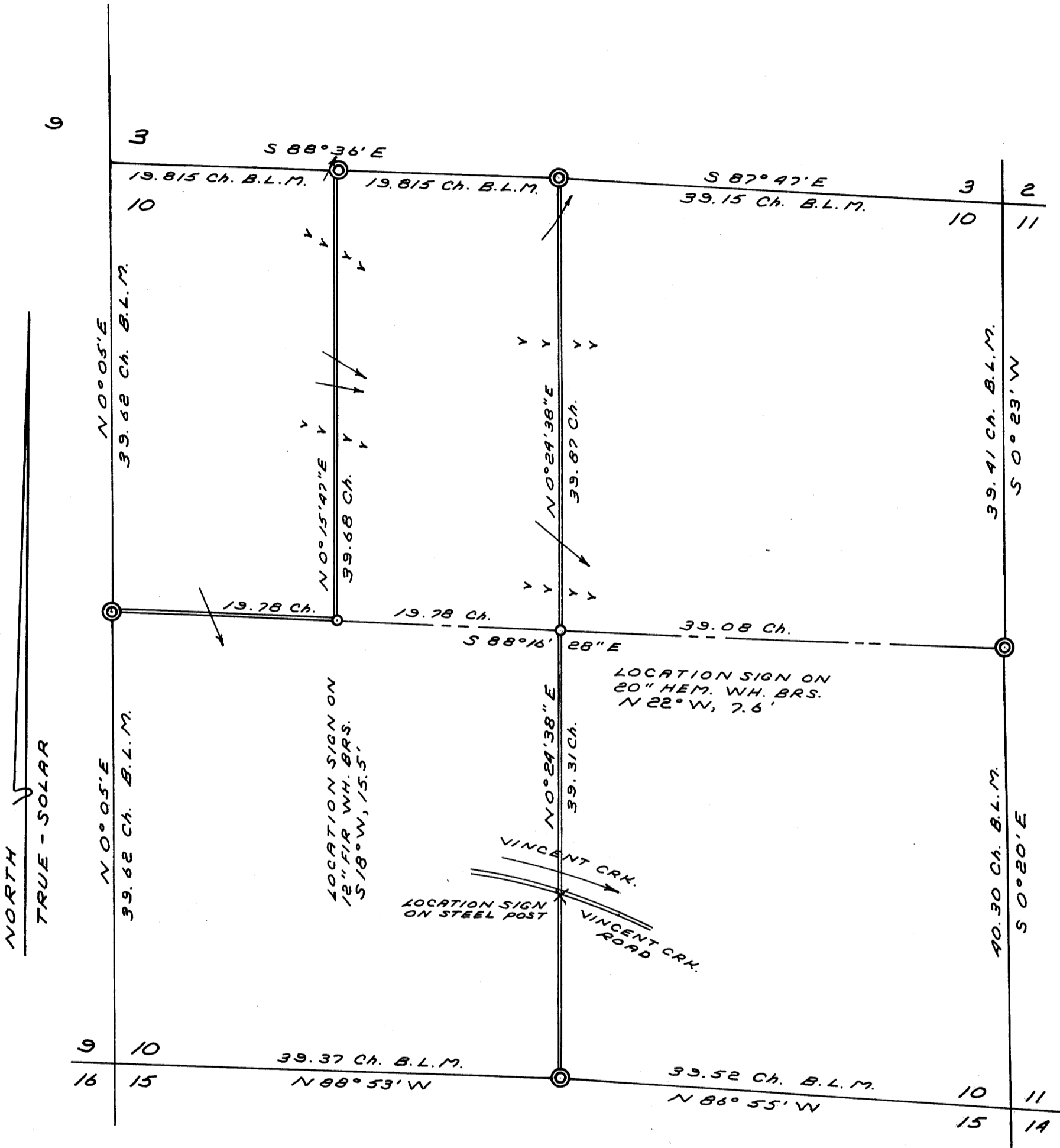
FILED
RECEIVED

SEP 29 1972

COUNTY SURVEYOR
DOUGLAS COUNTY, ORE.

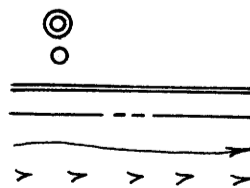
SURVEY FOR
U.S. DEPARTMENT OF THE INTERIOR
BUREAU OF LAND MANAGEMENT

SECTION 10, T21S, R9W.
DOUGLAS COUNTY



I.P. BRASS CAP FND. (B.L.M.)
 SET 5/8" I.R.'S
 TRUE LINES MARKED
 RANDOM LINES
 CREEKS
 RIDGES

SCALE: 1" = 660'
 AUGUST 30, 1972



REGISTERED
 PROFESSIONAL
 LAND SURVEYOR

Richard J. Hintz
 OREGON
 MAY 13, 1960
 RICHARD J. HINTZ
 497