

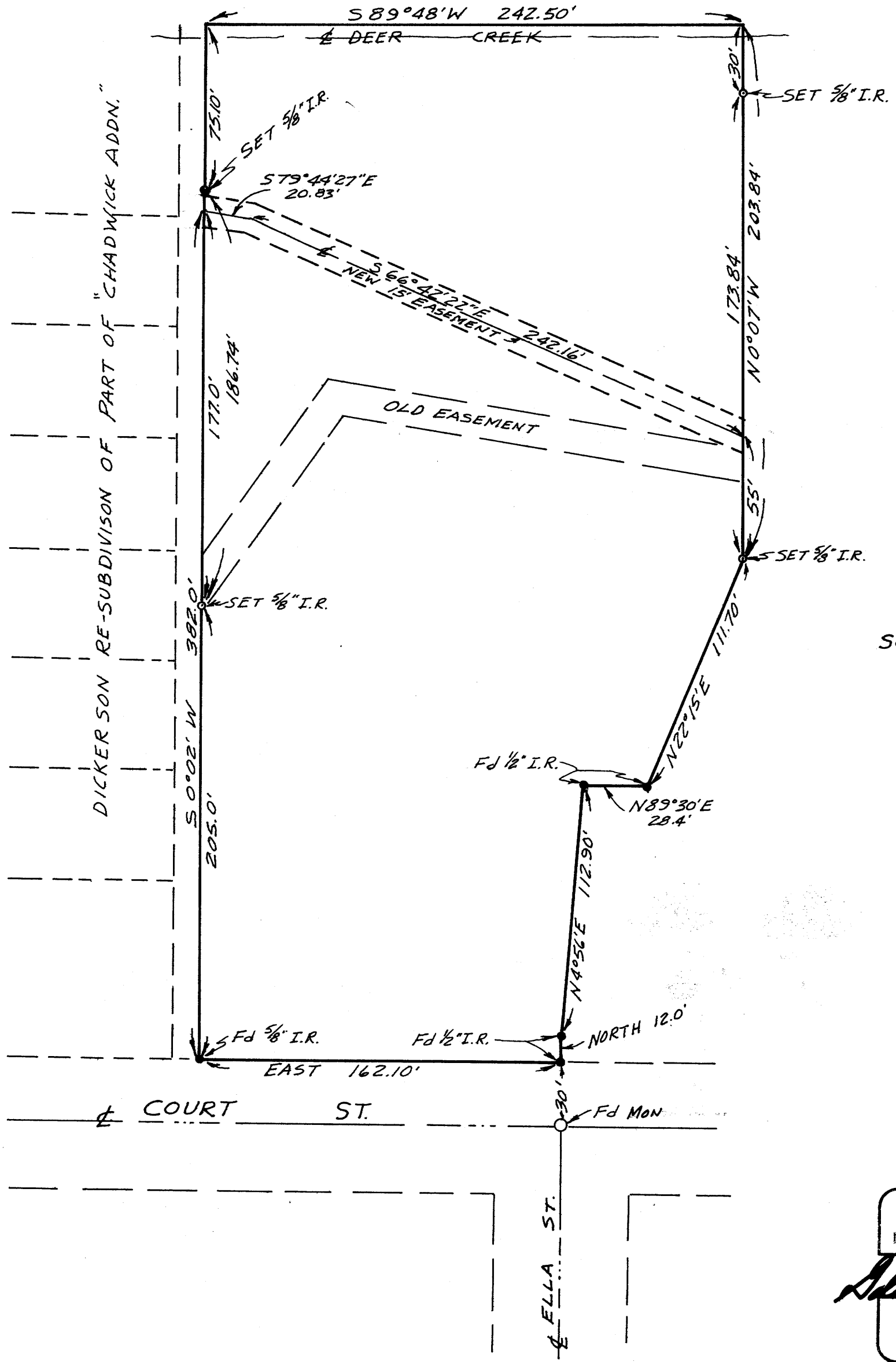
SURVEY TO SET PROPERTY CORNERS  
IN LOT "E" CHADWICK ADDITION TO ROSEBURG  
FOR W. F. BRENNER  
BY BAUGHMAN SURVEYING SERVICE

FILED  
RECEIVED

SEP 26 1972

COUNTY SURVEYOR  
DOUGLAS COUNTY, ORE.

COUNTY SURVEYORS FILE DATE AUGUST 1972  
DO NOT REMOVE FROM OFFICE



SCALE: 1" = 50'

REGISTERED  
PROFESSIONAL  
LAND SURVEYOR

*Glenn S. Baughman*

OREGON  
JULY 14, 1961  
GLENN S. BAUGHMAN  
536

DRWN. BY. EAB