

SURVEY TO SET PROPERTY CORNERS

FOR MR. JERRY THOMPSON
 BY BAUGHMAN SURVEYING

COUNTY SURVEYORS FILE DATA
 DO NOT REMOVE FROM OFFICE
 SERVICE

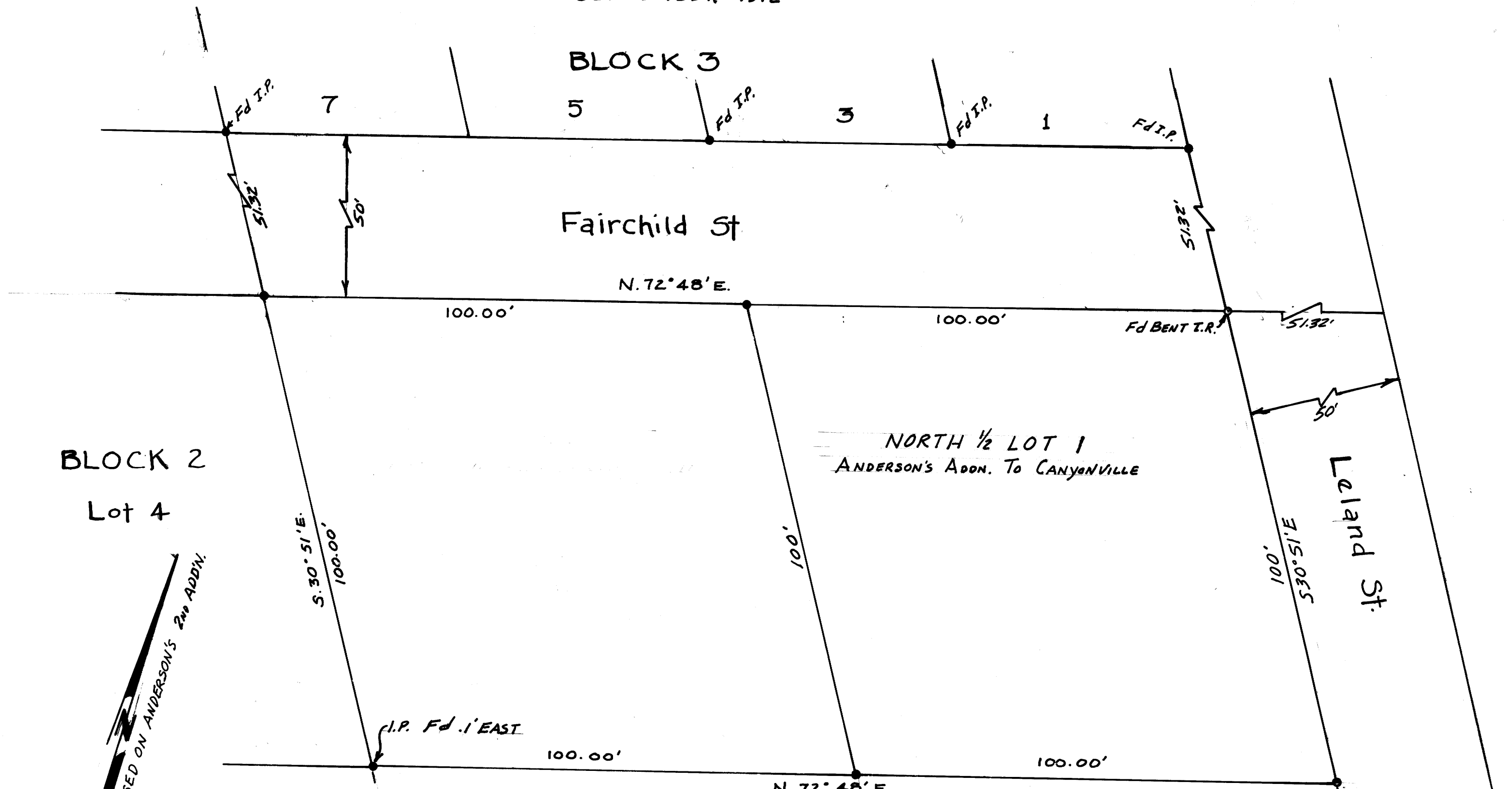
SEPTEMBER 1972

FILED
 RECEIVED

SEP 26 1972

COUNTY SURVEYOR
 DOUGLAS COUNTY, ORE

MAP FILE M 46 - 52



SCALE: 1"=20'

Legend:

• DENOTES 3/8" I.P. SET

REGISTERED
 PROFESSIONAL
 LAND SURVEYOR

Glenn S. Baughman
 OREGON
 JULY 14, 1961
 GLENN S. BAUGHMAN
 536

IN J. ROBERTS D.L.C. NO. 59-T.30S. R.5W.-W.M.

EAB