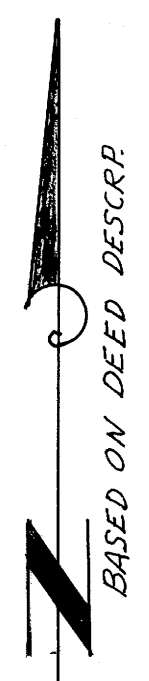


FILED  
RECEIVED

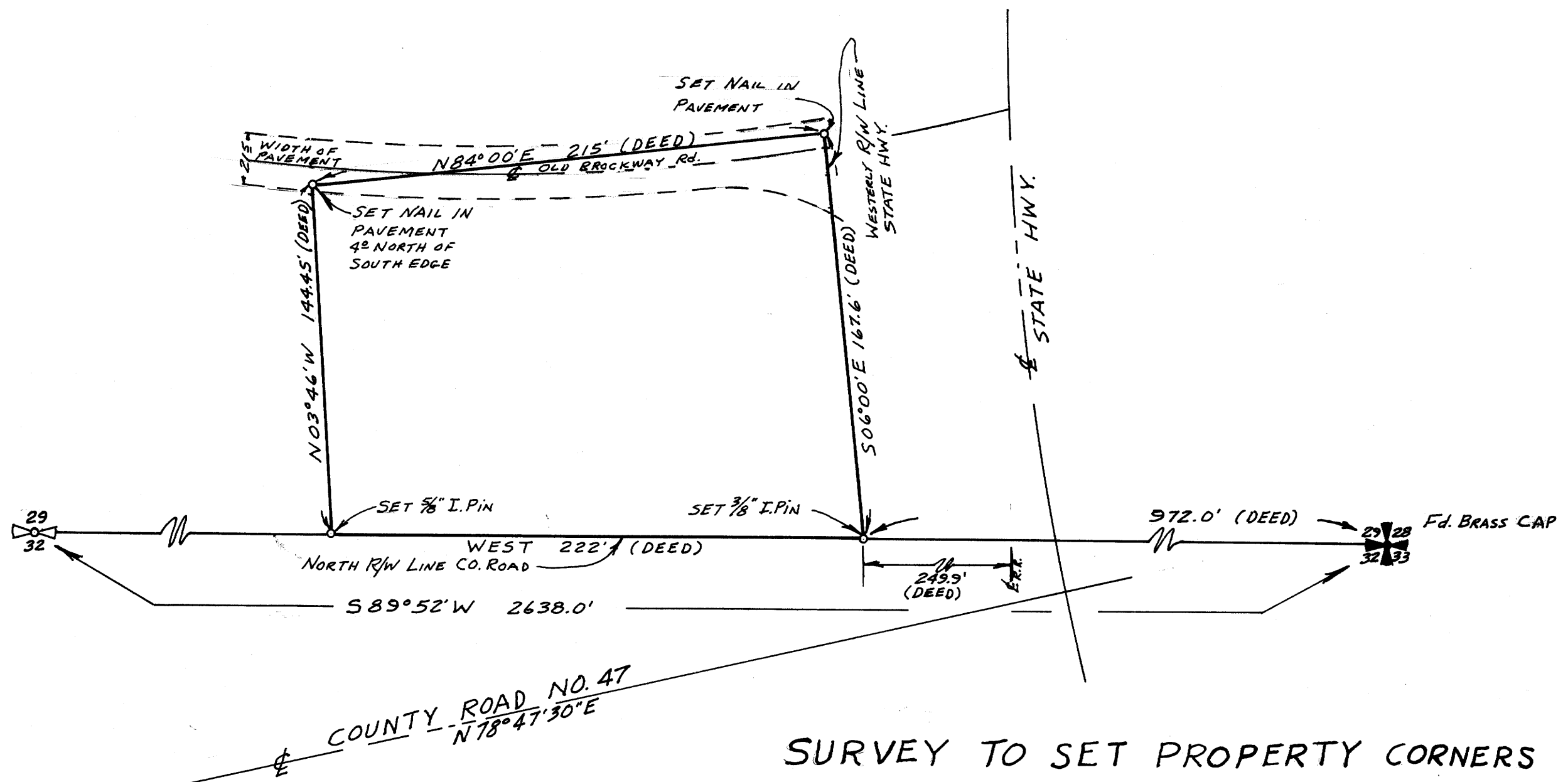
SEP 26 1972

COUNTY SURVEYOR  
DOUGLAS COUNTY, ORE.

MAP FILE M.46. 51



SCALE: 1"=50'



REGISTERED  
PROFESSIONAL  
LAND SURVEYOR

*Glenn S. Baughman*

OREGON  
JULY 14, 1951  
GLENN S. BAUGHMAN  
536

SURVEY TO SET PROPERTY CORNERS  
IN SECTION 29, T.28S., R.6W., W.M.  
FOR: WINSTON-DILLARD FIRE DISTR.  
BY: BAUGHMAN SURVEYING  
SEPT. 1972

COUNTY SURVEYORS FILE DATA  
DO NOT REMOVE FROM OFFICE

DRWN. BY: EAB

MAP FILE M.46. 51