

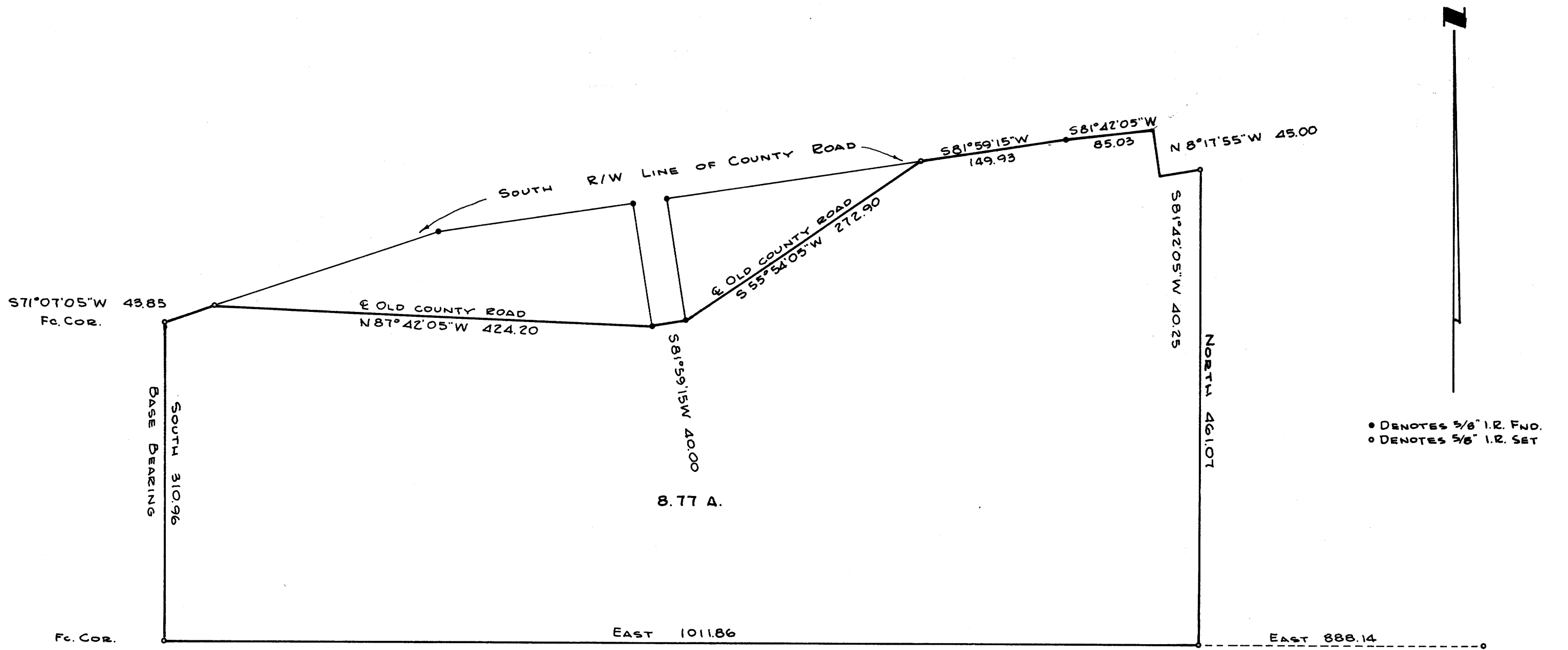
COUNTY SURVEYORS FILE DATA
DO NOT REMOVE FROM OFFICE

FILED
RECEIVED

SEP 26 1972

COUNTY SURVEYOR
DOUGLAS COUNTY, ORE

SURVEY IN LOT 5, SECTION 11, T. 27 S., R. 7 W., W.M.
SURVEYED FOR E. W. LASH
SURVEYED BY R. H. GEE - JUNE, 1972
SCALE 1" = 100'



S.E. COR. LOT 5,
SECTION 11,
T. 27 S., R. 7 W., W.M.

