

LAND SURVEY of a MINOR PARTITION

in SEC. 32, T.32 S., R.6 W., W.M. — AUG. 1972

FOR: M.W. Chadwick, Glendale, Ore. 97442, Ph. 832-2197
BY: Ronald A. Brandt, Glendale, Ore. 97442, Ph. 832-2729

DATUM:

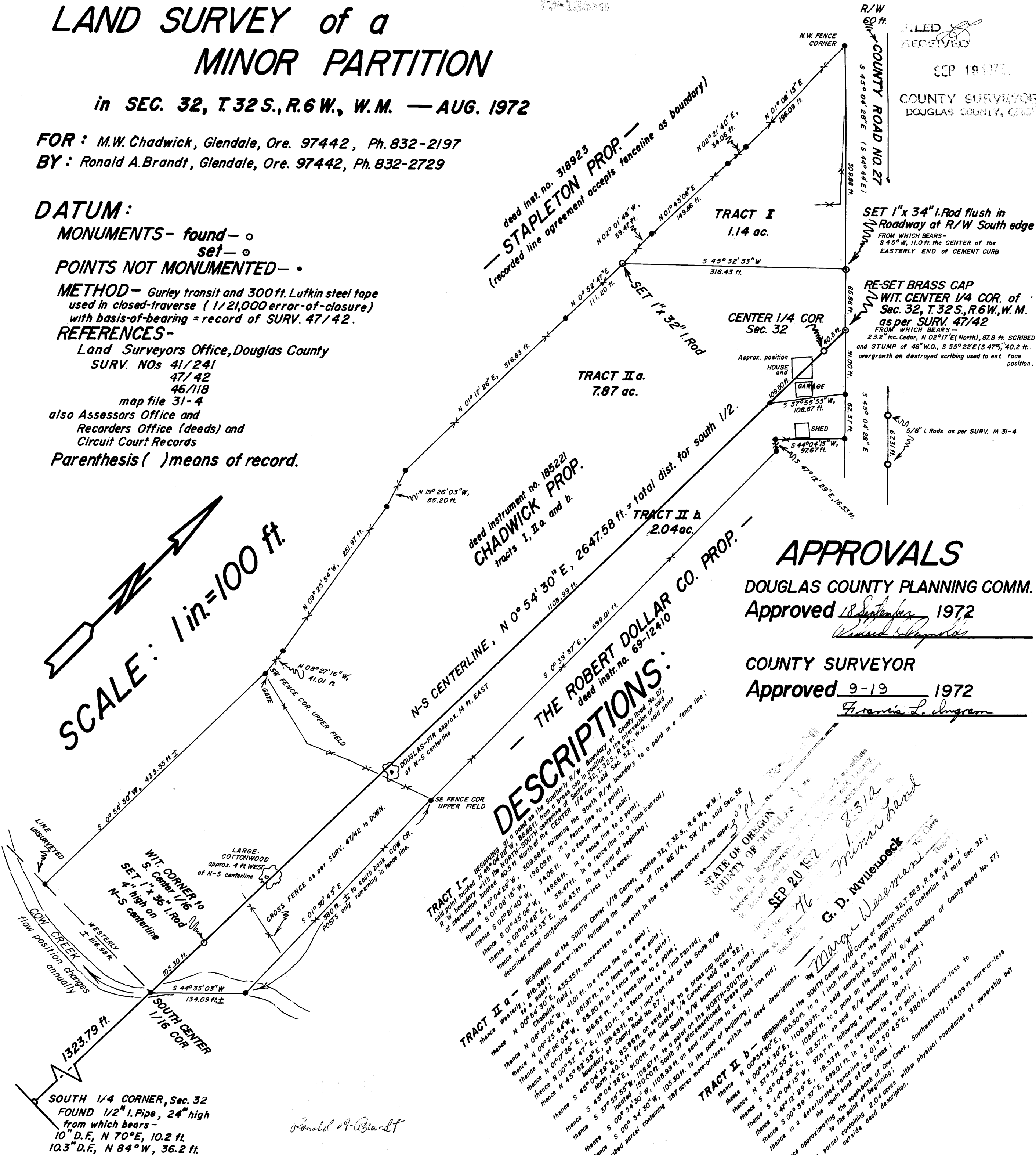
MONUMENTS— found—
set—
POINTS NOT MONUMENTED—

METHOD— Gurley transit and 300 ft. Lufkin steel tape used in closed-traverse (1/21,000 error-of-closure) with basis-of-bearing = record of SURV. 47/42.

REFERENCES—

Land Surveyors Office, Douglas County
SURV. NOS 41/241
47/42
46/118
map file 31-4
also Assessors Office and
Recorders Office (deads) and
Circuit Court Records
Parenthesis () means of record.

SCALE: 1 in. = 100 ft.



DESCRIPTIONS:

TRACT I— BEGINNING of a point on the Southern R/W boundary of said parcel located with the NORTH-SOUTH centerline of section 32, T. 32 S., R. 6 W., W.M., said point of intersection located 40.5 ft. North of the CENTER 1/4 Cor., said Sec. 32;
thence S 01° 08' 15" W, 309.88 ft. following the South R/W boundary to a point;
thence S 02° 21' 40" W, 34.06 ft. in a fence line to a point;
thence S 01° 45' 08" W, 149.66 ft. in a fence line to a point;
thence N 45° 52' 53" E, 516.43 ft. in a fence line to a point;
thence N 45° 52' 53" E, 516.43 ft. more-or-less to a point in a fence line;
described parcel containing more-or-less 1.14 acres.

TRACT II a— BEGINNING of the SOUTH Center 1/16 Corner, Section 32, T. 32 S., R. 6 W., W.M.;
thence Westerly, 216.98 ft. more-or-less to a point;
thence N 00° 54' 30" E, 435.35 ft. more-or-less to a point;
thence N 09° 25' 54" W, 251.97 ft. in a fence line to a point;
thence N 01° 17' 26" E, 316.63 ft. in a fence line to a point;
thence N 00° 52' 47" E, 111.20 ft. in a fence line to a point;
thence N 02° 21' 40" W, 34.06 ft. in a fence line to a point;
thence S 01° 45' 08" W, 149.66 ft. in a fence line to a point;
thence S 45° 04' 28" E, 91.00 ft. on said South R/W boundary to a point on the NORTH-SOUTH Centerline of said Center 1/4 Cor., said Sec. 32;
thence S 00° 54' 30" W, 105.30 ft. on said Center 1/4 Cor., said Sec. 32;
thence S 00° 54' 30" W, 105.30 ft. more-or-less to a point in a fence line;
described parcel containing 7.87 acres.

TRACT II b— BEGINNING of the SOUTH Center 1/16 Corner, Section 32, T. 32 S., R. 6 W., W.M.;
thence N 00° 54' 30" E, 105.30 ft. to a point on the SOUTH Center 1/16 Corner, said Sec. 32;
thence S 45° 04' 28" E, 108.67 ft. in a fence line to a point;
thence S 44° 04' 15" W, 97.67 ft. in a fence line to a point;
thence S 47° 12' 29" E, 16.53 ft. in a fence line to a point;
thence in a deteriorated fence line, S 01° 50' 45" E, 380 ft. more-or-less to the point of beginning;
thence approximating the south bank of Cow Creek, Southwesterly, 134.09 ft. more-or-less to the point of beginning;
described parcel outside dead description.

APPROVALS

DOUGLAS COUNTY PLANNING COMM.
Approved 18 September 1972
Walter Reynolds
COUNTY SURVEYOR
Approved 9-19 1972
Francis L. Ingram

STATE OF OREGON
COUNTY OF DOUGLAS
G. D. NYLÉN
County Surveyor
SEP 20 1972
8:31a
Minor hand

COUNTY SURVEYORS FILE DATA
DO NOT REMOVE FROM OFFICE