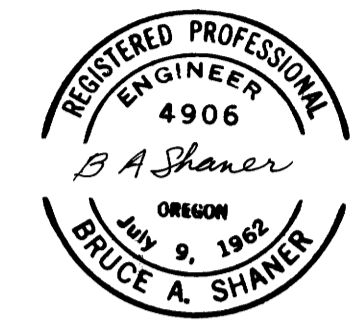
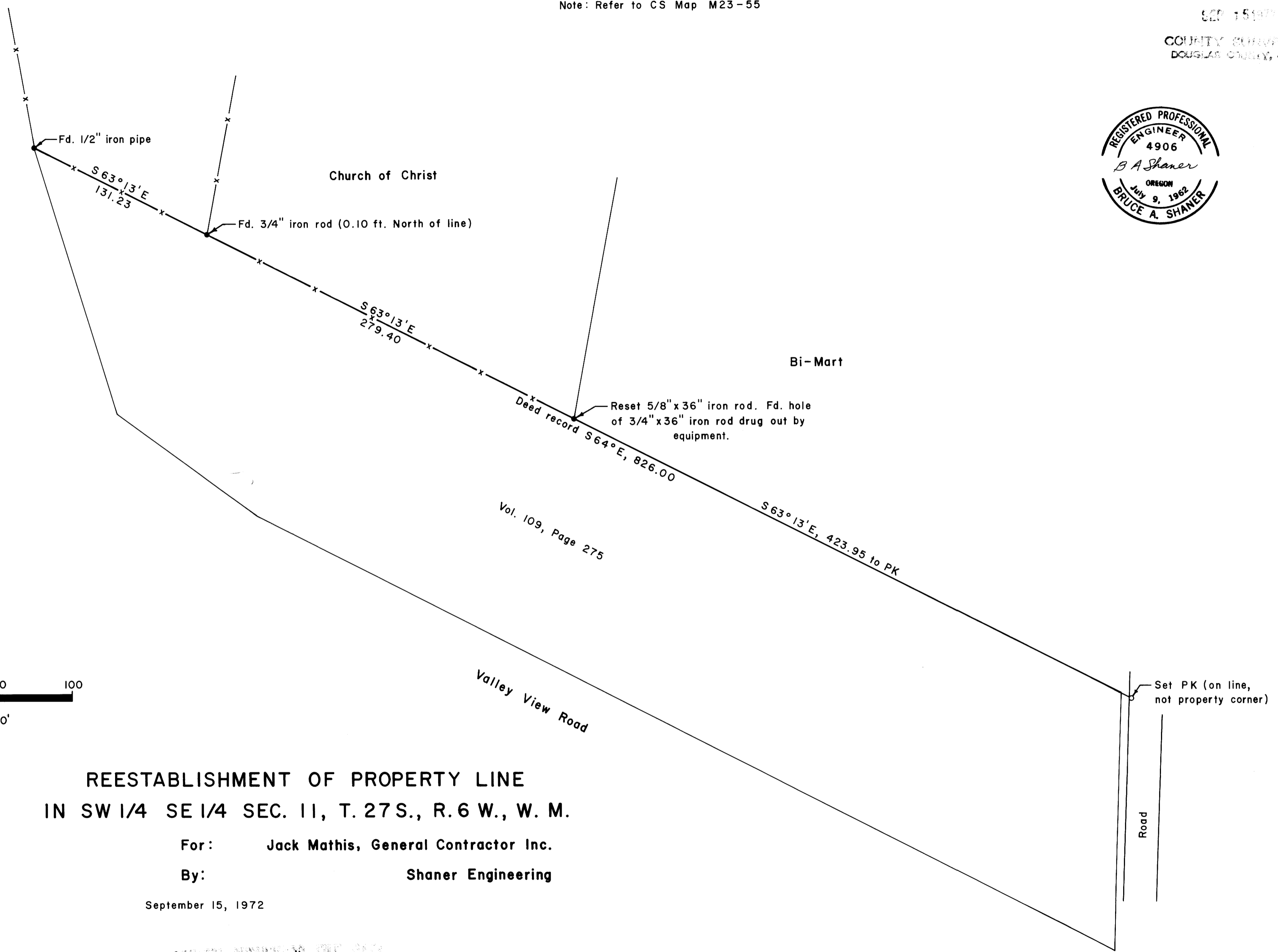


M 46 - 42

FILED  
RECEIVED  
SEP 15 1972  
COUNTY SURVEYOR  
DOUGLAS COUNTY, OREGON



Note: Refer to CS Map M23-55



Fd. 1/2" iron pipe

Church of Christ

Fd. 3/4" iron rod (0.10 ft. North of line)

Bi-Mart

Reset 5/8" x 36" iron rod. Fd. hole of 3/4" x 36" iron rod drug out by equipment.

Deed record S 64° E, 826.00

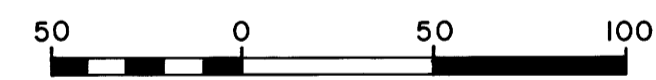
Vol. 109, Page 275

S 63° 13' E, 423.95 to PK

Valley View Road

Set PK (on line, not property corner)

Road



Scale: 1" = 50'

### REESTABLISHMENT OF PROPERTY LINE IN SW 1/4 SE 1/4 SEC. 11, T. 27 S., R. 6 W., W. M.

For: Jack Mathis, General Contractor Inc.

By: Shaner Engineering

September 15, 1972

COUNTY SURVEYORS FILE DATA  
DO NOT REMOVE FROM OFFICE

M 46 - 42