

# SURVEY OF LOT 3, JORGEN'S SUBDIVISION SECTION 21, T.28S., R.6W., W.M., WINSTON, OREGON FOR CHARLES POLE, WINSTON, OREGON

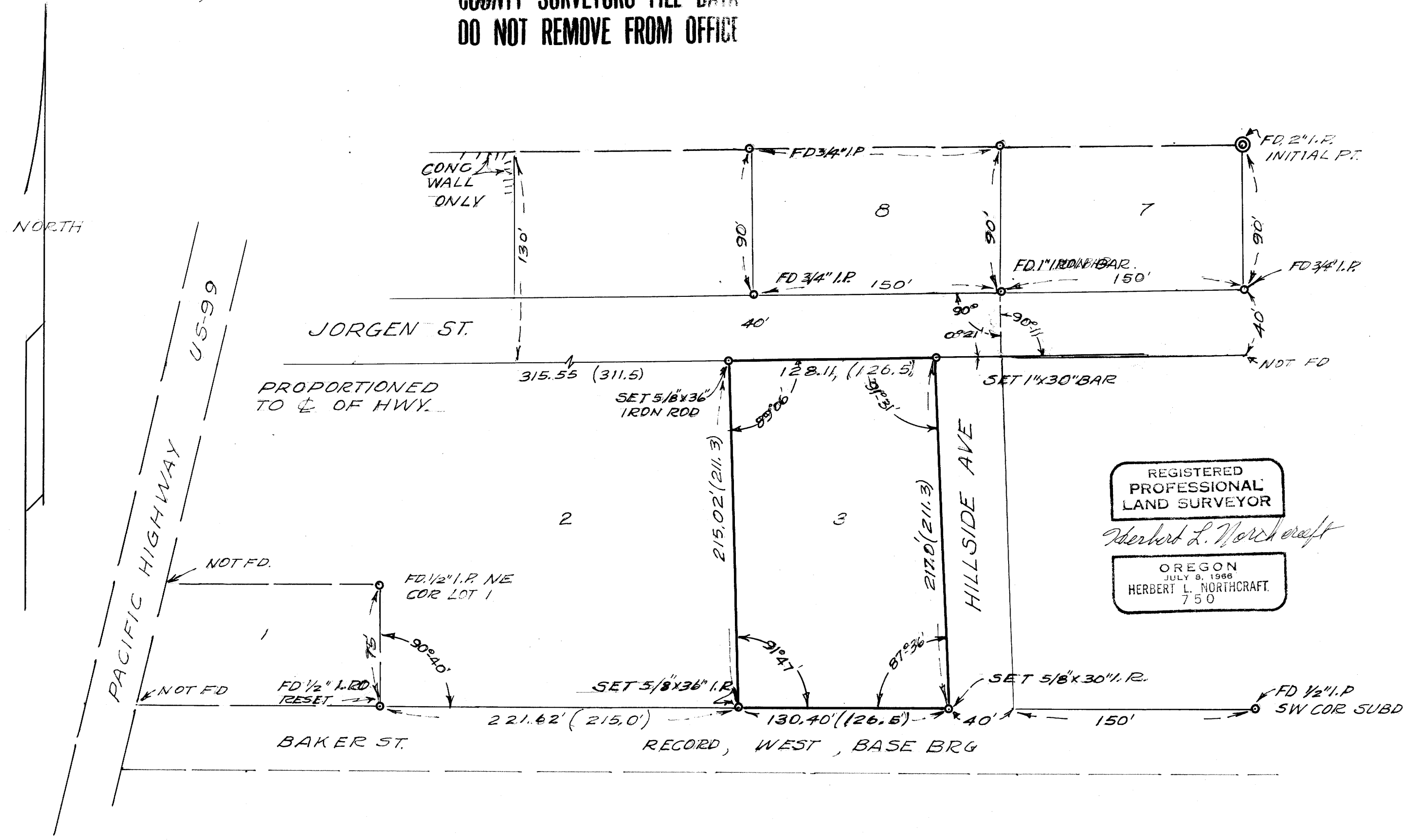
FILED *[Signature]*  
RECEIVED  
JUL 5 1972  
COUNTY SURVEYOR  
DOUGLAS COUNTY, ORE.

BY HERBERT L. NORTHCRAFT

JUNE, 1972

**COUNTY SURVEYORS FILE DATA  
DO NOT REMOVE FROM OFFICE**

SCALE 1" = 60'



MAP FILE M 46 - 4

MAP FILE M 46 - 4