

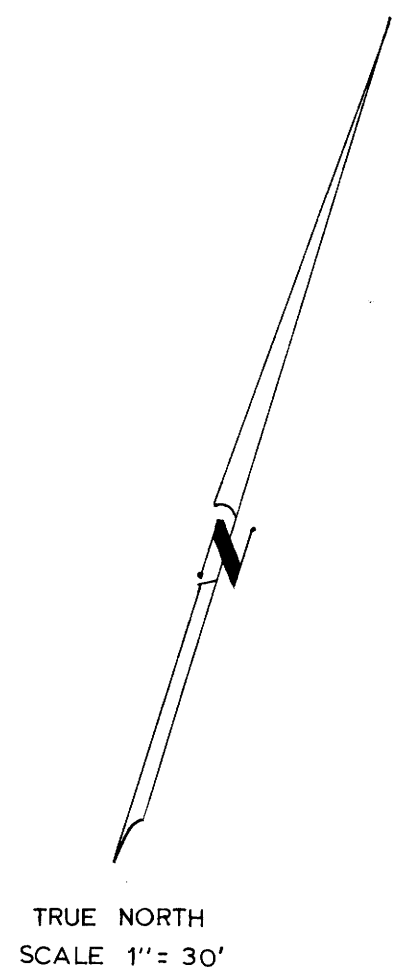
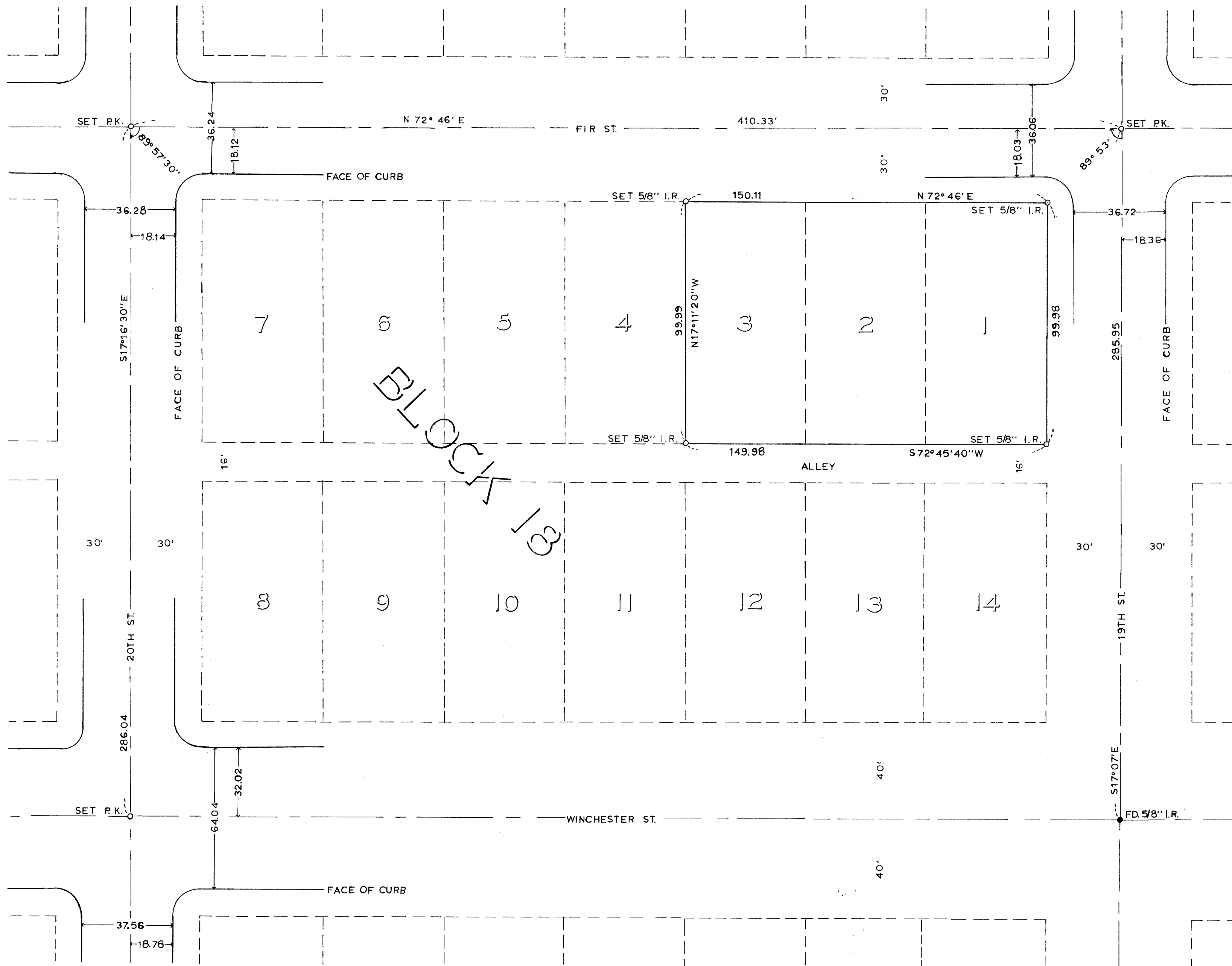
COUNTY SURVEYORS FILE DATA  
DO NOT REMOVE FROM OFFICE

# SURVEY FOR ELSIE FULLER

IN BLOCK 18 OF THE PLAT OF REEDSPORT  
SECTION 3, T. 22 S., R. 12 W., W.M.

FILED  
AUG 21 1972  
COUNTY SURVEYOR'S OFFICE  
DOUGLAS COUNTY, OREGON

C.S. File No. 56/20  
MAP M46 - 33...



SURVEYED BY  
COUNTY SURVEYOR'S OFFICE  
DOUGLAS COUNTY, OREGON

AUGUST 18, 1972  
Francis L. Ingram County Surveyor

REGISTERED  
PROFESSIONAL  
LAND SURVEYOR

*Francis L. Ingram*

OREGON  
JULY 11, 1959  
FRANCIS L. INGRAM  
902

M46 - 33