

ROAD CONTROL SURVEY

LOOKINGGLASS - TENMILE COUNTY ROAD NO. 108

T. 28 S., R. 7 W., W.M.

COUNTY SURVEYORS FILE DATA
DO NOT REMOVE FROM OFFICE

[Signature]

COUNTY SURVEYOR
FRANCIS L. INGRAM

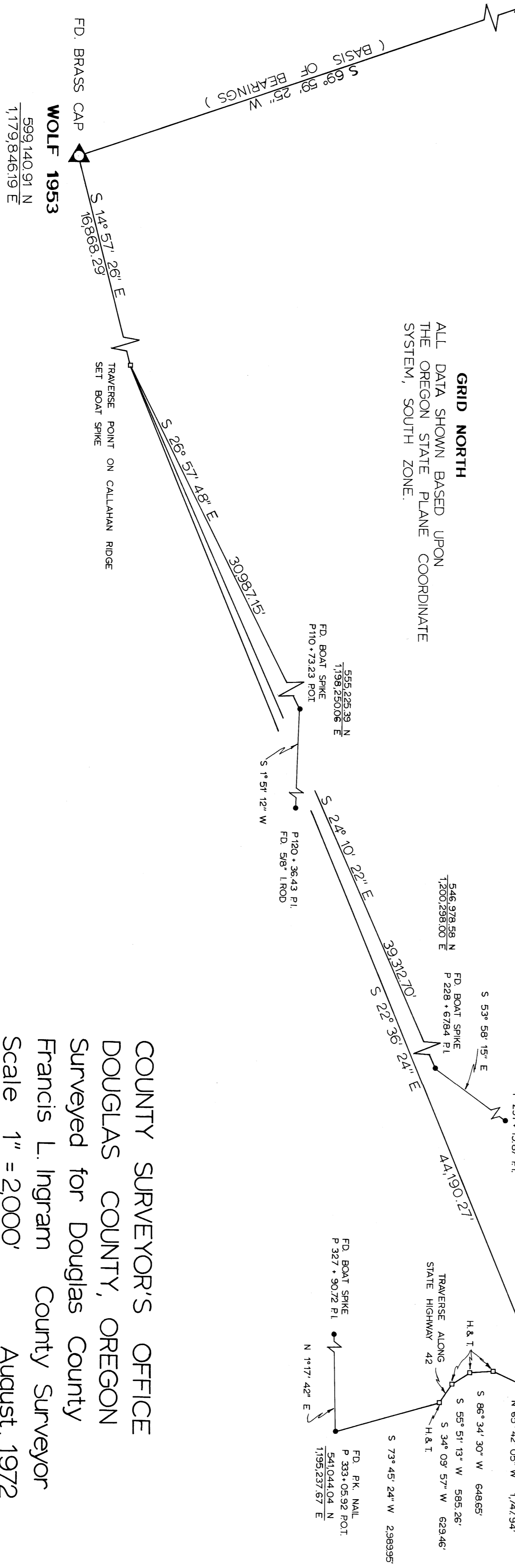
C. S. FILE NO. 58/19

WILBUR 1942

FD. BRASS CAP



GRID NORTH
ALL DATA SHOWN BASED UPON
THE OREGON STATE PLANE COORDINATE
SYSTEM, SOUTH ZONE.



COUNTY SURVEYOR'S OFFICE
DOUGLAS COUNTY, OREGON
Surveyed for Douglas County
Francis L. Ingram County Surveyor
Scale 1" = 2,000'
August, 1972

REGISTERED
PROFESSIONAL
LAND SURVEYOR

Francis L. Ingram

OREGON
JULY 11, 1960
FRANCIS L. INGRAM
902

MAP FILE M46-32
C. S. FILE NO. 58/19