

COUNTY SURVEYORS FILE DATA
DO NOT REMOVE FROM OFFICE

FILED
RECEIVED 7-7'

COUNTY SURVEYORS
SOUTH COUNTY, OREGON

SURVEY IN SECTION 34, T26S, R3W, W.M.

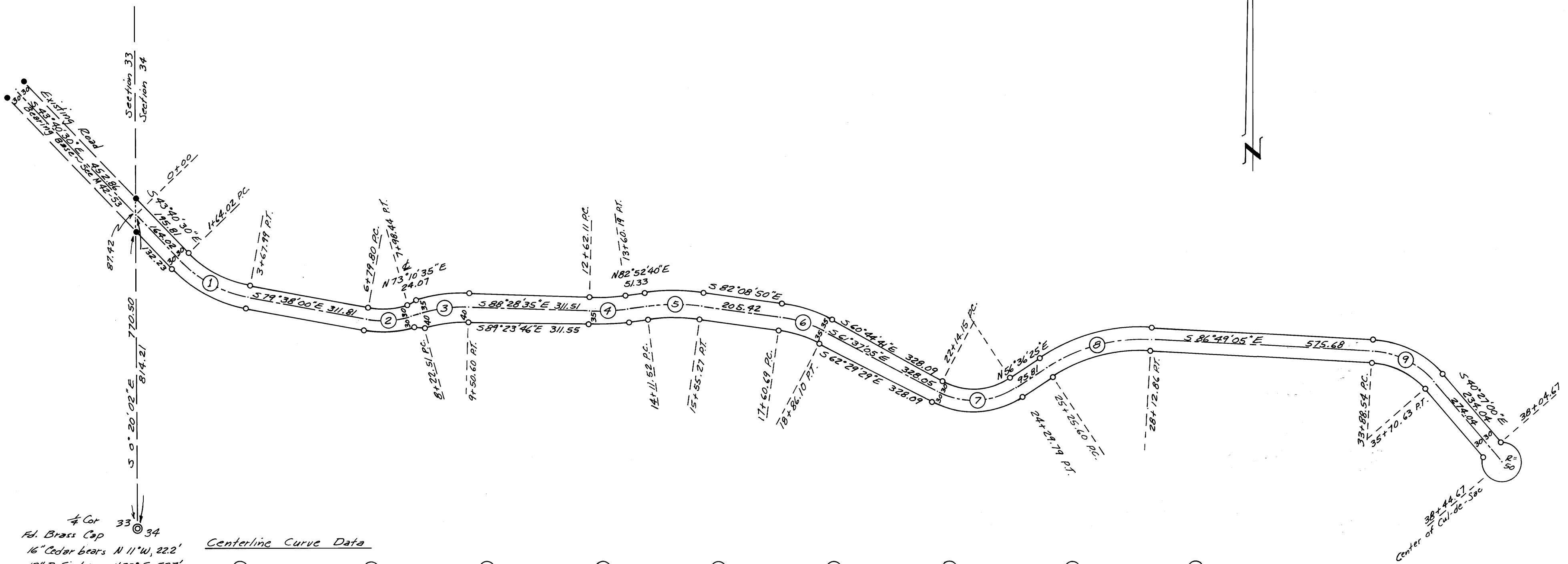
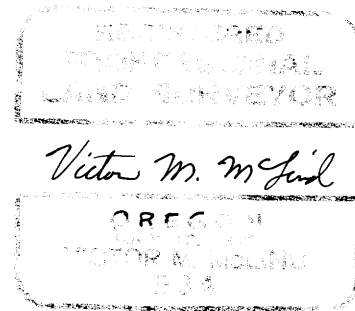
Surveyed for Bill Vian

Surveyed by Victor M. McLind

August 1972

Scale: 1" = 200'

• ~ Indicates $\frac{5}{8}$ " Iron Rod



Centerline Curve Data

①	②	③	④	⑤	⑥	⑦	⑧	⑨
R = 325.00	R = 250.00	R = 400.00	R = 650.00	R = 550.00	R = 350.00	R = 200.00	R = 450.00	R = 225.00
Δ = 35°57'30"	Δ = 27°11'25"	Δ = 18°20'50"	Δ = 8°38'45"	Δ = 14°58'30"	Δ = 20°31'45"	Δ = 61°46'30"	Δ = 36°34'30"	Δ = 46°22'05"
L = 203.97	L = 118.64	L = 128.09	L = 98.08	L = 143.75	L = 125.41	L = 215.64	L = 287.26	L = 182.09
T = 105.47	T = 60.46	T = 64.60	T = 49.14	T = 72.29	T = 63.38	T = 119.64	T = 148.71	T = 96.36
C = 200.64	C = 117.53	C = 127.54	C = 97.99	C = 143.34	C = 124.74	C = 205.34	C = 282.41	C = 177.16
(S61°39'15"E)	(N86°46'18"E)	(N82°21'00"E)	(N87°12'03"E)	(S89°38'05"E)	(S71°52'58"E)	(N87°29'40"E)	(N74°53'40"E)	(S63°38'03"E)

1/4 Cor 33
Fd. Brass Cap
16" Cedar bears N 11°W, 222'
13" D. Fir bears N23°E, 507'

Center of Cul-de-Sac

M46-29

MAP FILE M46-29