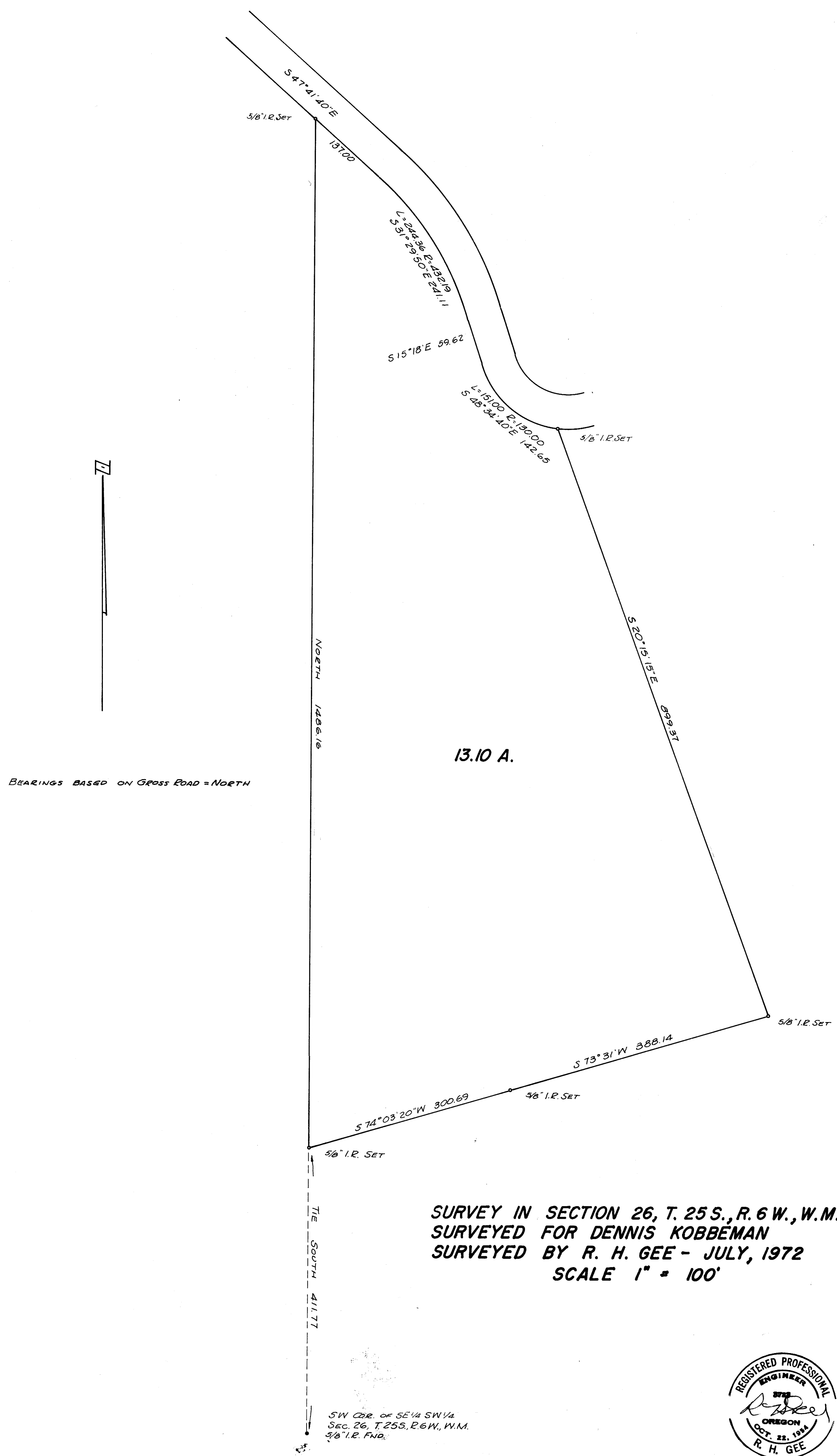


COUNTY SURVEYORS FILE DATA
NOT REMOVE FROM OFFICE

FILED
RECEIVED

AUG 7 1972
COUNTY SURVEYOR
DOUGLAS COUNTY, OREGON



BEARINGS BASED ON GROSS ROAD = NORTH

13.10 A.

SURVEY IN SECTION 26, T. 25 S., R. 6 W., W.M.
SURVEYED FOR DENNIS KOBEMAN
SURVEYED BY R. H. GEE - JULY, 1972
SCALE 1" = 100'

