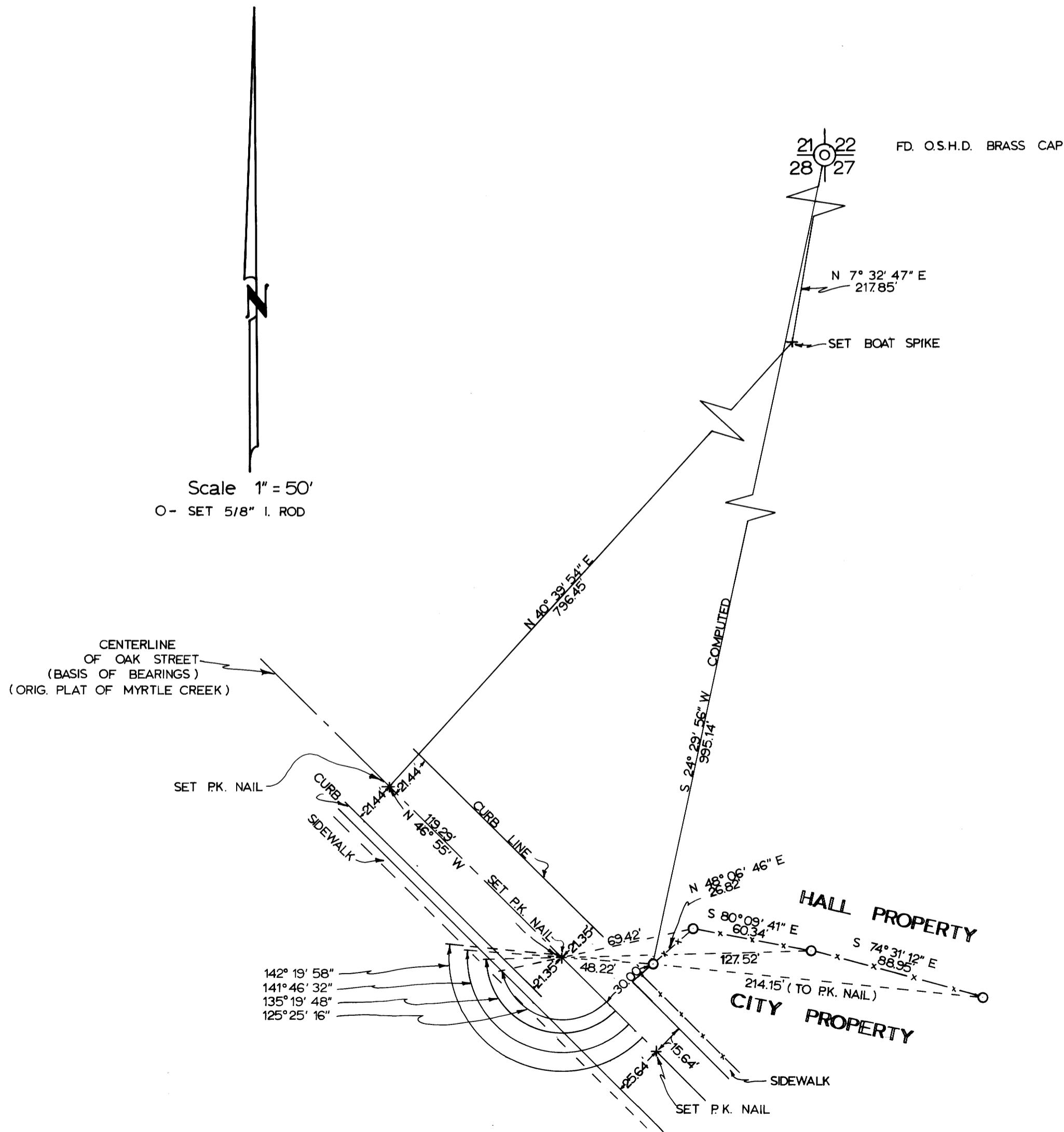


COUNTY SURVEYORS FILE DATA
DO NOT REMOVE FROM OFFICE

Survey in Sec. 28, T. 29 S., R. 5 W., W.M.
Circuit Court Case No. 36749
Hall vs. City of Myrtle Creek, Ore.

RECEIVED
JUL 27 1972
COUNTY BOARD OF
DOUGLAS COUNTY, OREGON



COUNTY SURVEYOR'S OFFICE
DOUGLAS COUNTY, OREGON

Sec. 28, T. 29 S., R. 5 W., W.M.

July 18, 1972
Francis L. Ingram County Surveyor

REGISTERED
PROFESSIONAL
LAND SURVEYOR

Francis L. Ingram

OREGON
JULY 18 1968
FRANCIS L. INGRAM
902

C.S. FILE NO. 56/78
MAP FILE M 46-13

MAP FILE M 46-13