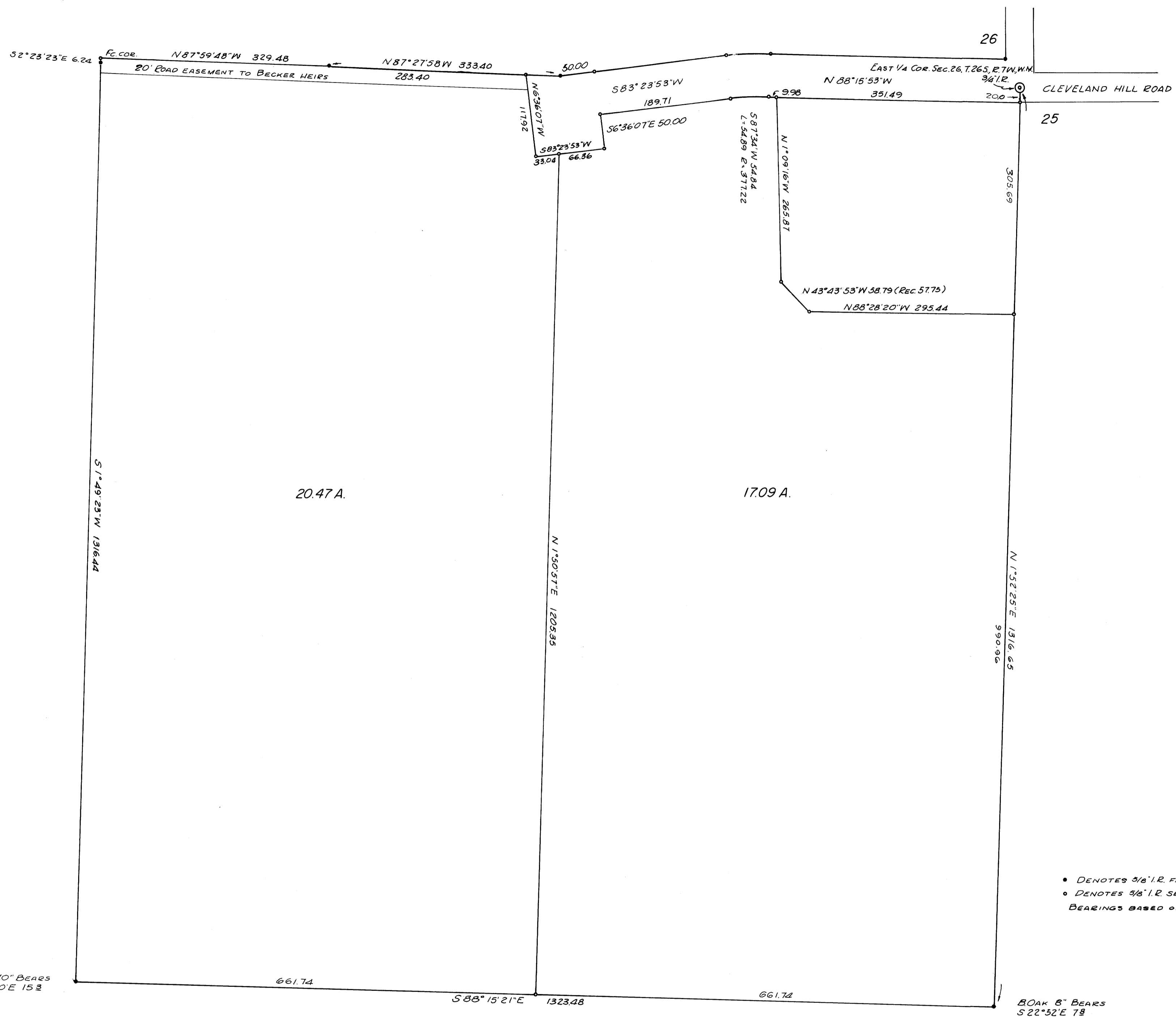


FILED RECEIVED

JUL 2 1972

COUNTY SURVEYOR DOUGLAS COUNTY, ORE.



- DENOTES 3/8" I.R. FND.
- DENOTES 3/8" I.R. SET.

BEARINGS BASED ON C.S. MAP FILE M 42-12
M 37-76

SECTION 26, T.26 S., R.7 W., W.M.
CLEVELAND - WEST, OREGON, LTD.
SURVEYED BY R. H. GEE - JUNE, 1972
SCALE 1" = 100'

COUNTY SURVEYORS FILE DATA
DO NOT REMOVE FROM OFFICE

