

SURVEY IN N.W 1/4 SEC. 3, T25 S, R5 W, W.M.
 Surveyed for Ray & Laura Davis by Victor M. McLind
 JULY 1972

COUNTY SURVEYORS FILE DATA
 DO NOT REMOVE FROM OFFICE

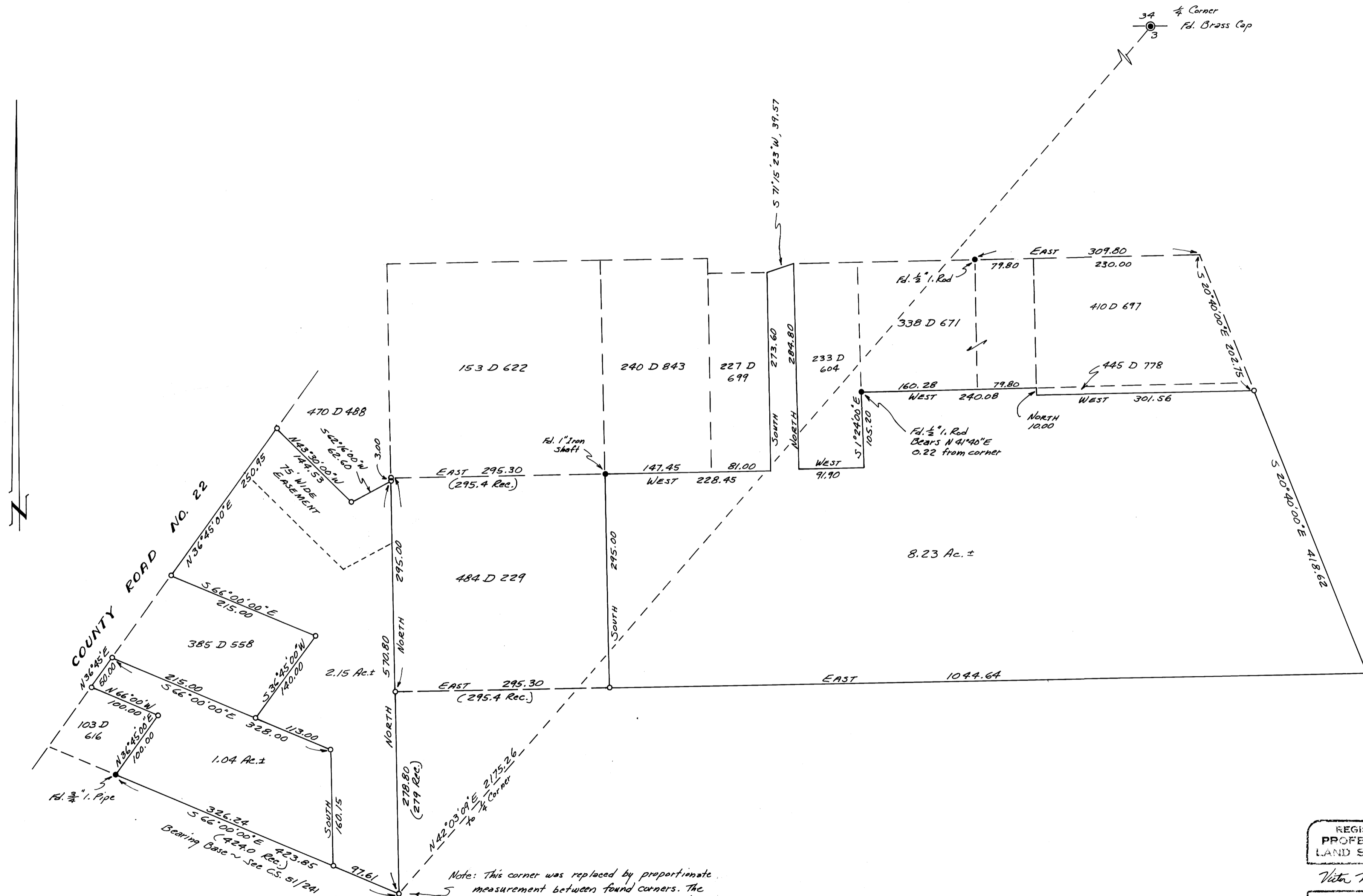
FILED
 RECEIVED

JUL 19 1972

COUNTY SURVEYOR
 DOUGLAS COUNTY, OREG.

SCALE: 1"=100'

o ~ Indicates Set 5/8" Iron Rod



Note: This corner was replaced by proportionate measurement between found corners. The location checks closely with the location of an iron pipe (now missing), according to the testimony of Ray Davis.

REGISTERED
 PROFESSIONAL
 LAND SURVEYOR
 Victor M. McLind
 OREGON
 JULY 17, 1970
 VICTOR M. MCLIND
 934

MAP FILE M 46 - 11

MAP FILE M 46 - 11