

MINOR LAND PARTITIONING
SECTION 6, DLC 37, TOWNSHIP 29 SOUTH, RANGE 7 WEST, WILLAMETTE MERIDIAN
 Surveyed for Charles G. & Wilma G. Gale by Don E. Garrett
MAY 1972
 o-Set 5/8" I. Rod

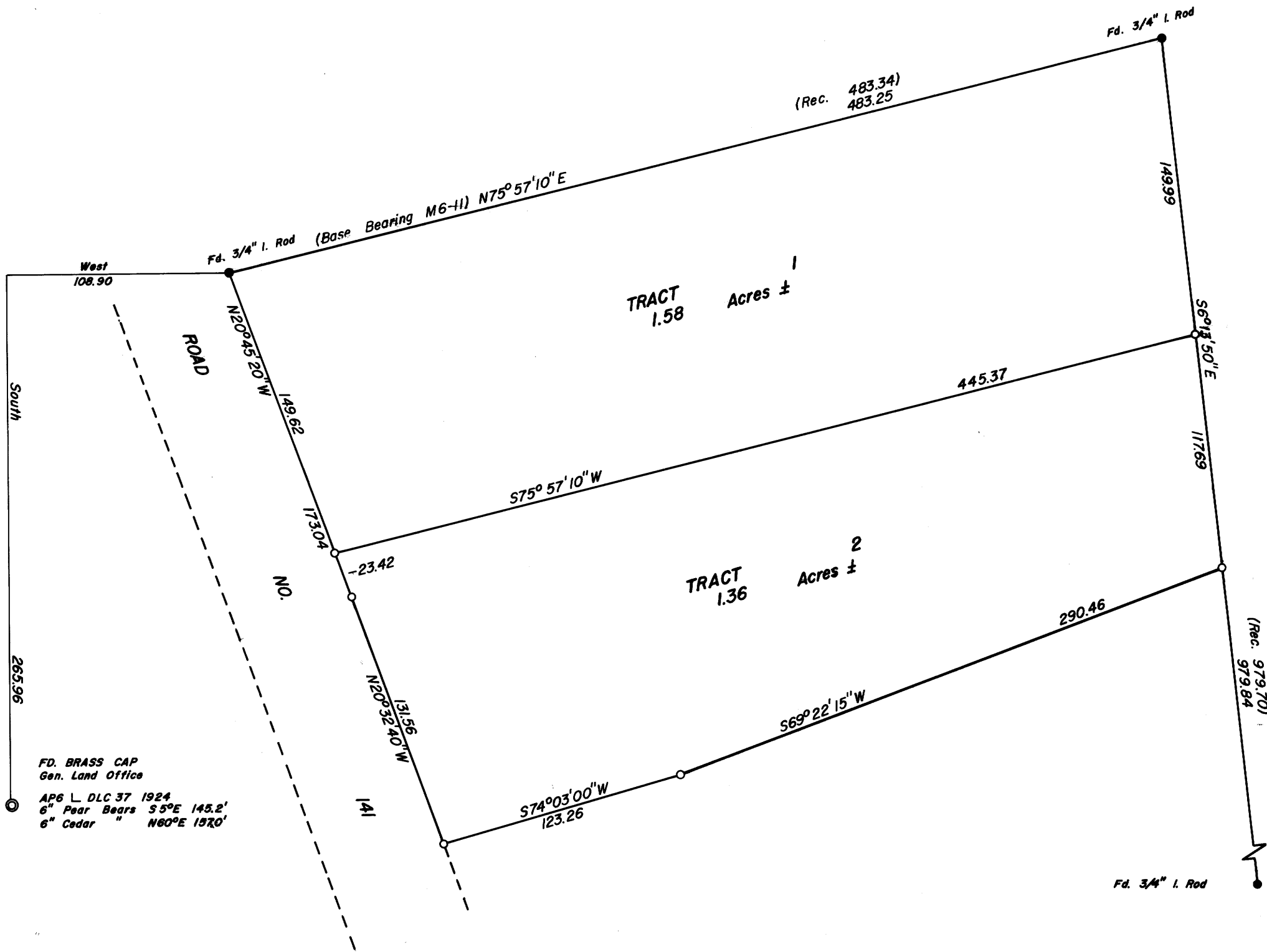
COUNTY SURVEYORS FILE DATA
DO NOT REMOVE FROM OFFICE

Scale 1" = 60'

FILED
 RECEIVED

SEPT. 18 1972.

COUNTY SURVEYOR
 DOUGLAS COUNTY, ORE.



FD. BRASS CAP
 Gen. Land Office
 AP6 L. DLC 37 1924
 6" Pear Bears S5°E 145.2'
 6" Cedar " N60°E 1520'

APPROVED JUNE 2, 1972.

Francis L. Ingram
 COUNTY SURVEYOR

APPROVED BY THE DOUGLAS COUNTY PLANNING COMMISSION

ON THIS 31st. DAY OF MAY, 1972.

William C. Smith PRESIDENT Sara L. Givens SECRETARY

Descriptions of Tracts 1 & 2 are Recorded Under Int. No. _____
 in The Deed Records of Douglas County, Oregon.

REGISTERED
 PROFESSIONAL
 LAND SURVEYOR

Don E. Garrett
 OREGON
 JULY 14, 1961
 DON E. GARRETT
 544