

Minor Land Partition

Situated in Sec. 15, T.27S., Rg. 5 W., W.M.

For *S.W. Turner*
 By *Baughman Surveying Service*
 Scale 1" = 100' June 1972

QUALITY SURVEYORS WILL BE HELD
 TO NOT REMOVE FROM RECORD

Legend:

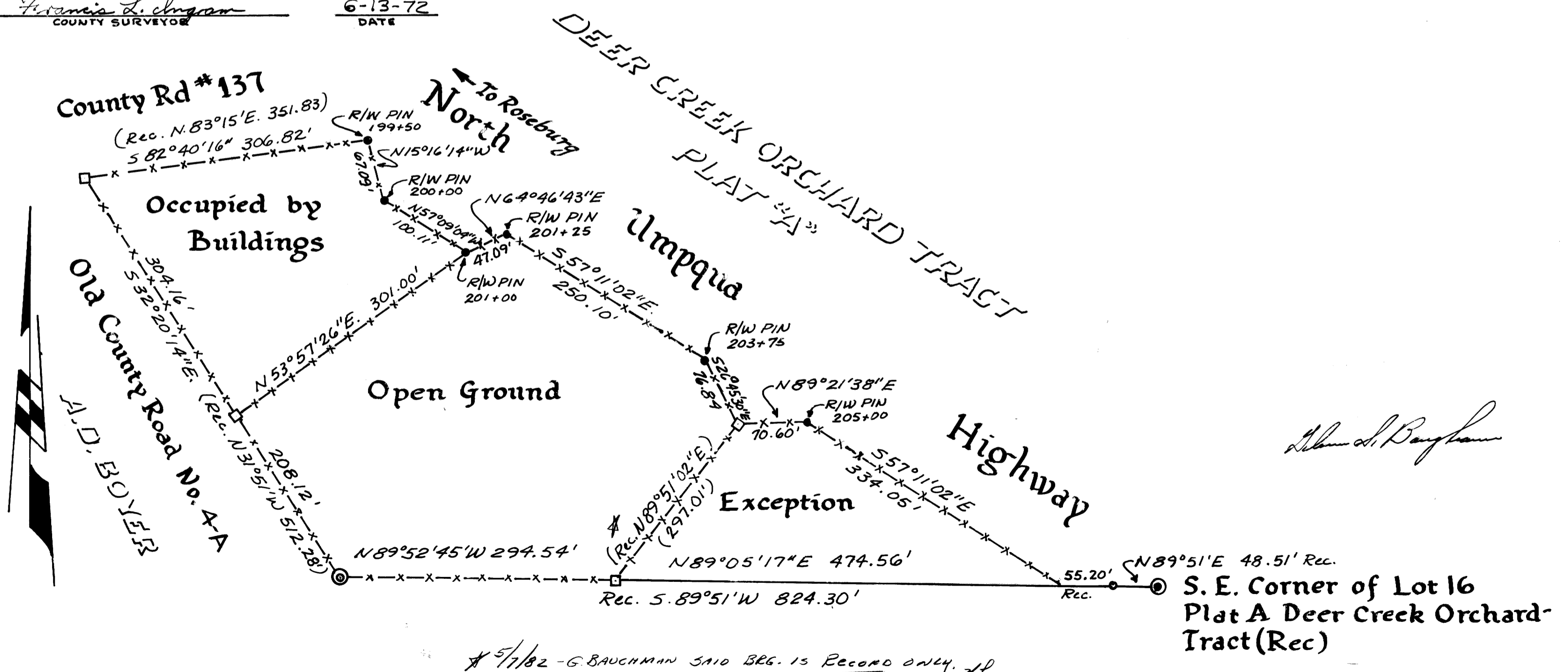
- Fd. 5/8" I.R.
- ⊙ Fd. 1/2" Prop. Cor. S.R.
- Fd. 3/4" I.R.
- Fence Posts

APPROVALS

By order of Douglas County
 Planning Commission. Approved _____ 1972

William C. Stiles 6-12-72
 CHAIRMAN DATE

Francis L. Ingram 6-13-72
 COUNTY SURVEYOR DATE



Alan S. Baughman

* 5/1/82 - G. BAUGHMAN SAID BRG. IS RECORD ONLY. JB

See M 45-75A

MAP FILE M 45-75

M 45-75

See M 45-75A