

# Minor Land Partition

Situated in Sec. 1, T26 S., Rg 3 W. W.M.

For Raymond Houde

By Baughman Surveying Service

Scale 1" = 100'

June 1972

COUNTY SURVEYORS FILE DATA  
DO NOT REMOVE FROM OFFICE

FILED  
RECEIVED

JUN 13 1972

COUNTY SURVEYORS FILE DATA  
DO NOT REMOVE FROM OFFICE

FILED  
RECEIVED

JUN 16 1972

COUNTY SURVEYOR  
DOUGLAS COUNTY, ORE.

## Legend

- Set  $\frac{5}{8}$ " I.R.
- Fd.  $\frac{3}{4}$ " I.R.

REGISTERED  
PROFESSIONAL  
LAND SURVEYOR

*John S. Baughman*

OREGON  
JULY 19 1961  
GLENN C. BAUGHMAN  
836

## APPROVALS

By order of Douglas County  
Planning Commission. Approved 1972

*William P. [Signature]*

6-12-72

CHAIRMAN

DATE

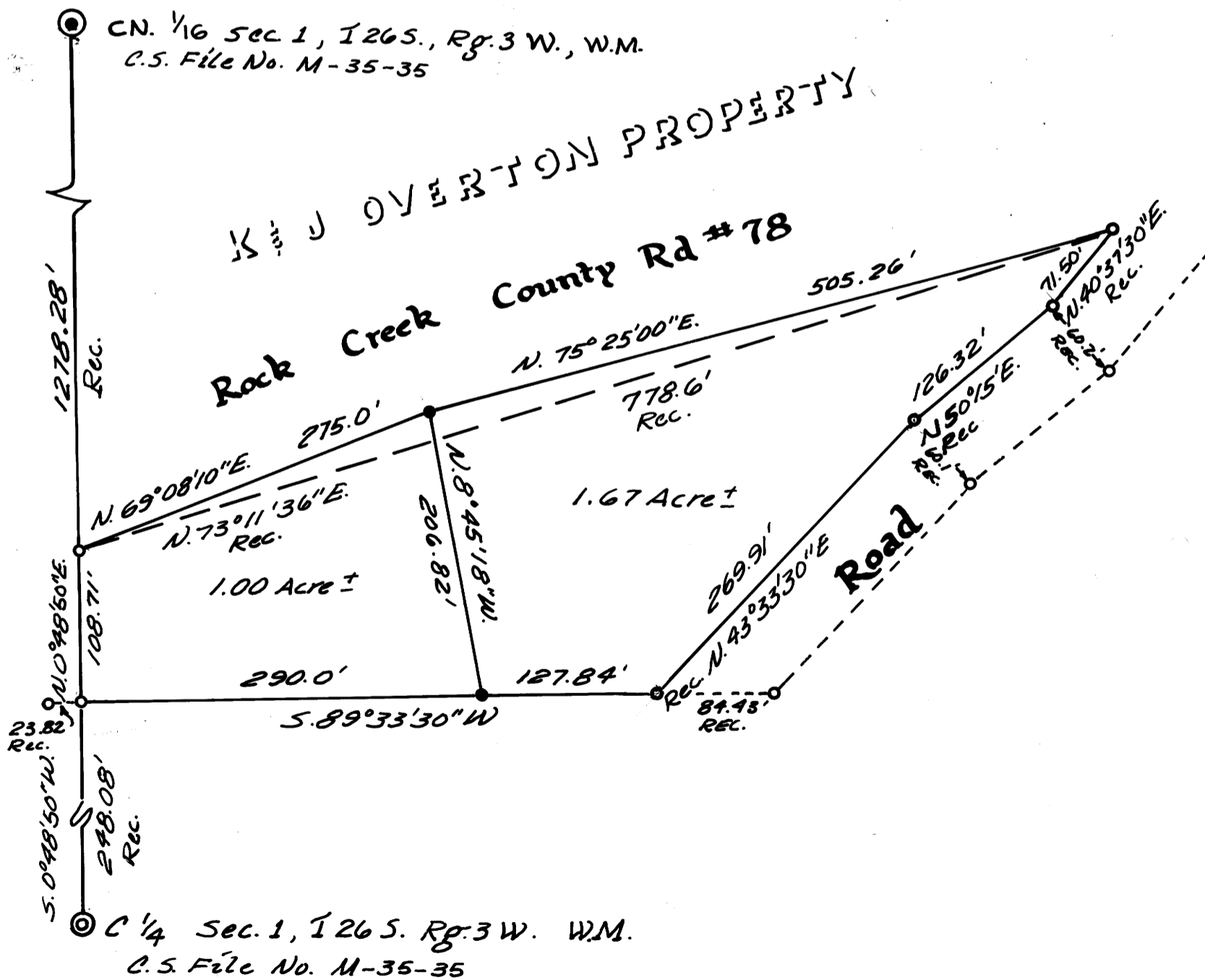
*Francis L. [Signature]*  
COUNTY SURVEYOR

6-13-72

DATE

• CN.  $\frac{1}{16}$  Sec 1, T26 S., Rg. 3 W., W.M.  
C.S. File No. M-35-35

ROBERTSON PROPERTY  
Rock Creek County Rd #78



• C  $\frac{1}{4}$  Sec. 1, T26 S. Rg. 3 W. W.M.  
C.S. File No. M-35-35

Bearings based on N.0°48'50"E. as per Thomas E. Shrum Jr. Survey #M-35-35

SEE M 45-74A

MAP SHEET M 45-74

See M 45-74A

FILED M 45-74A